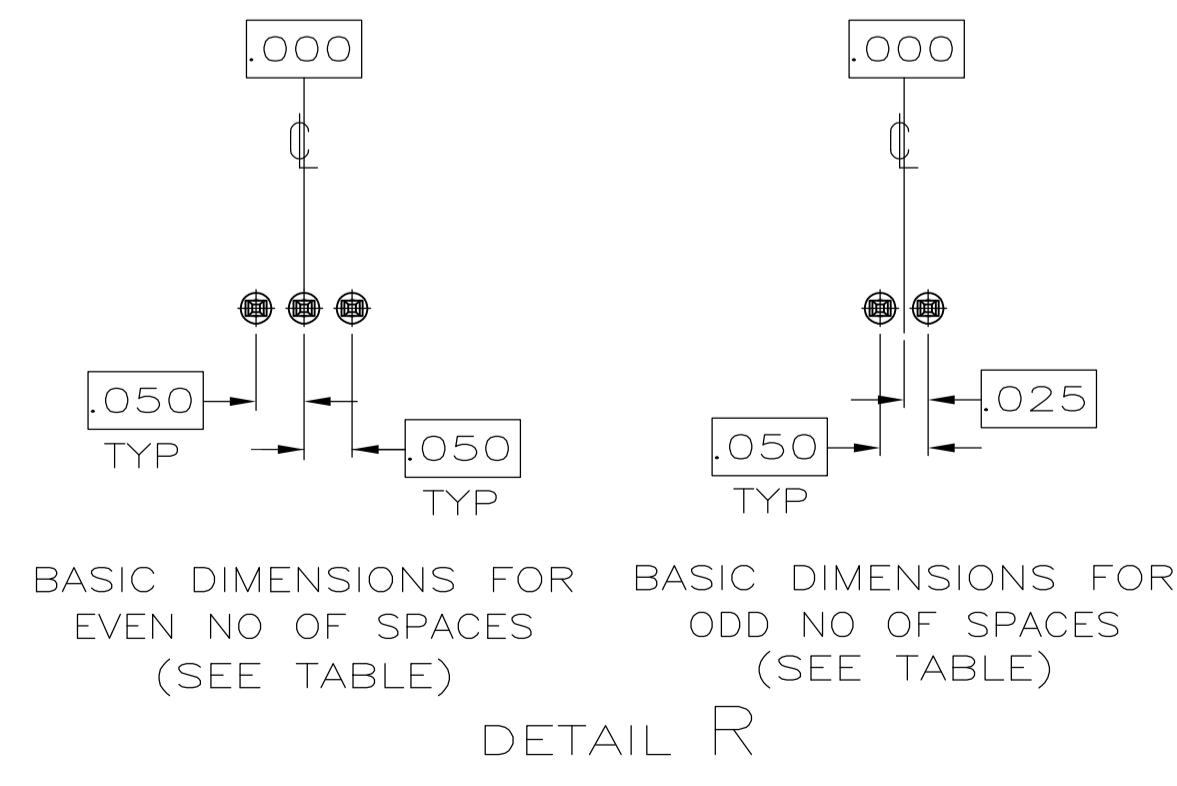
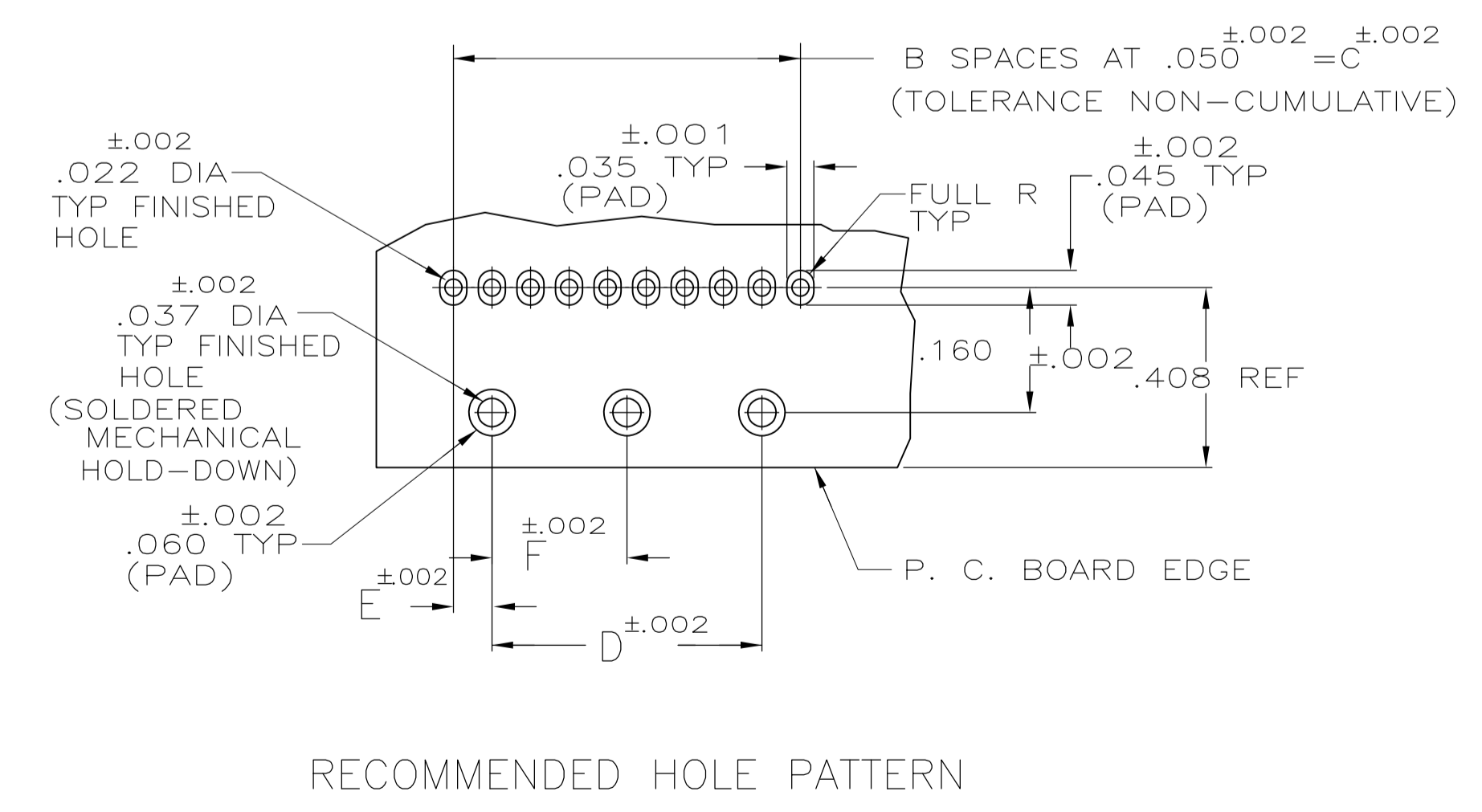
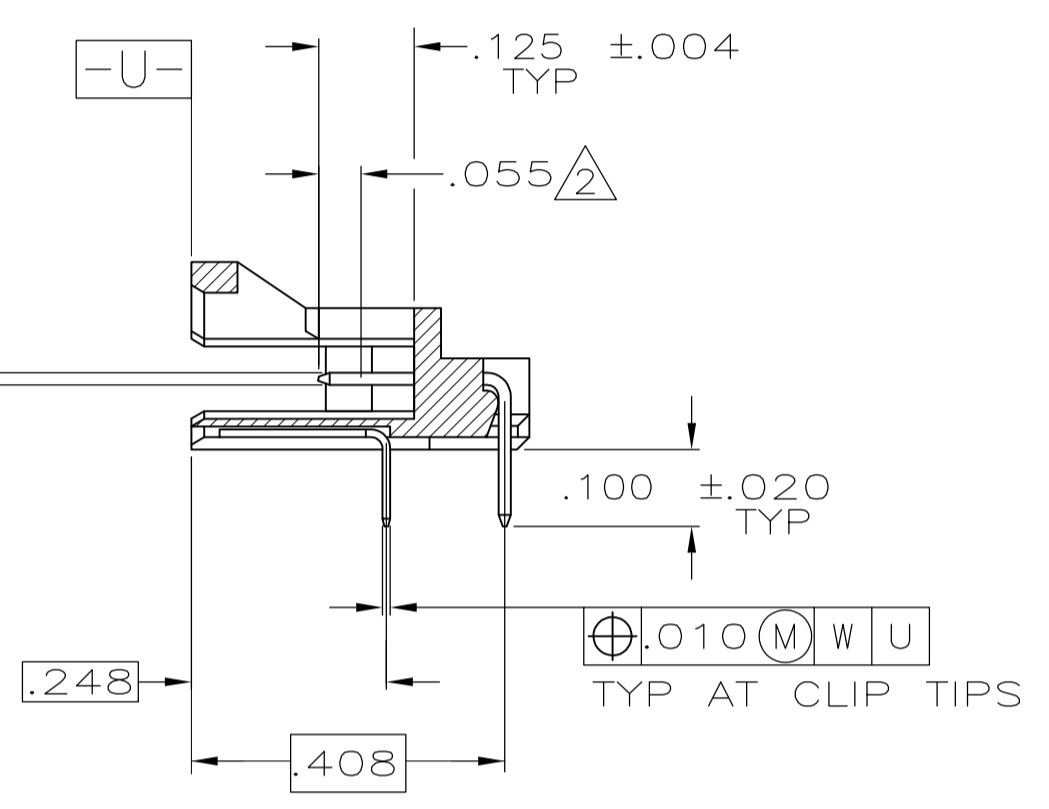
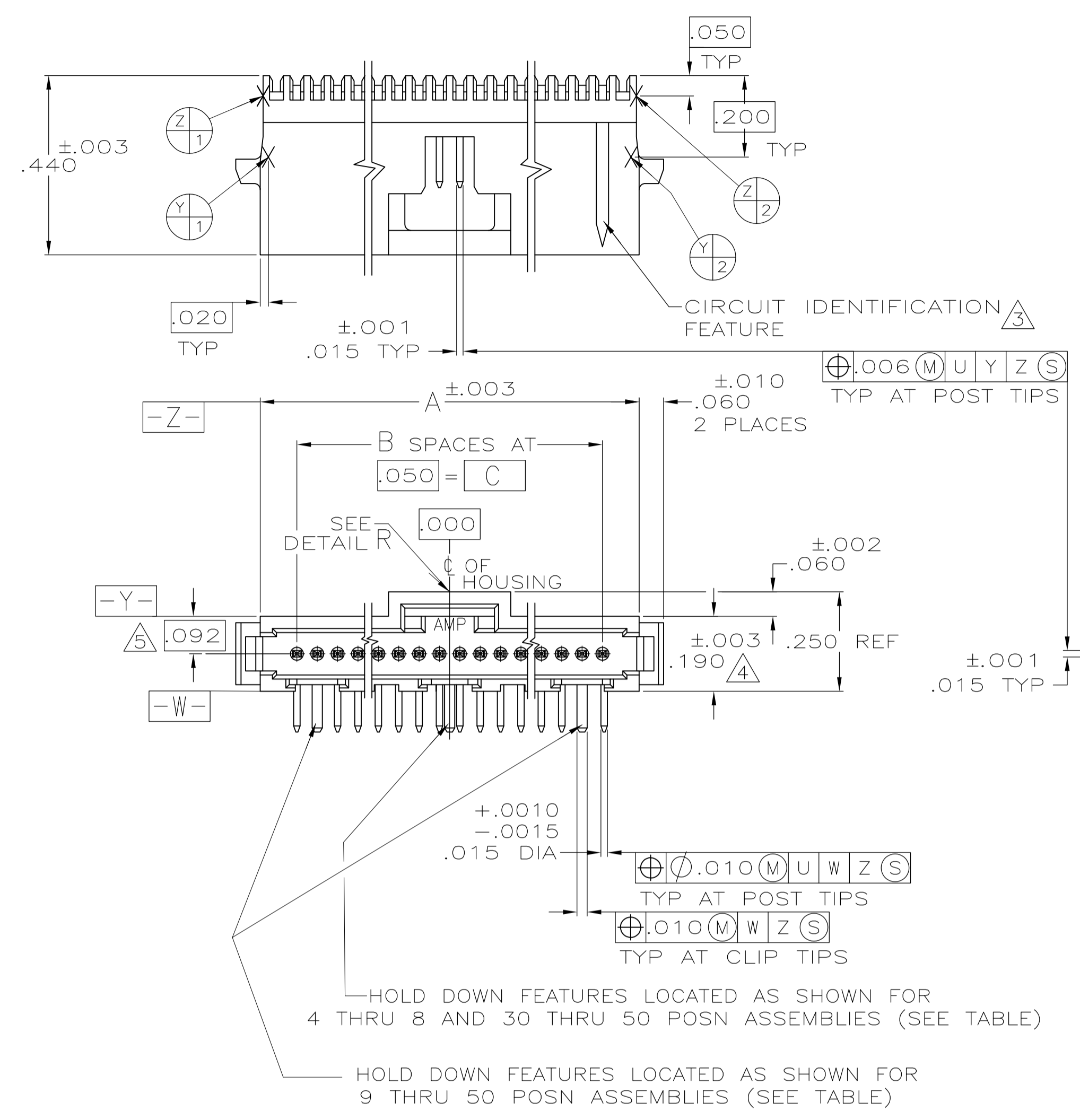


LOC		DIST		REVISIONS			
AD	00	REV	PER	DESCRIPTION	DATE	DWN	APVD
T		REV PER	OG3C-0541-04		200CT04	RB	DS
TJ		REVISED PER	ECO-09-021826		09JAN10	KK	AEG



- △ CONTACT AREAS PLATED WITH .000030 GOLD, SOLDER TAILS PLATED WITH .000150 TIN-LEAD, ALL OVER .000050 NICKEL
- △ POINT OF MEASUREMENT FOR GOLD THICKNESS
- △ CIRCUIT IDENTIFICATION FEATURE OMITTED ON 4,5,6 & 7 POSITION HEADER ASSEMBLIES
- △ DIMENSION APPLIES AT BASE OF SHROUD
- △ THE NOTED DIMENSIONS APPLY AT THE INTERSECTION OF THE POST AND HOUSING
- △ CONTACT AREAS PLATED WITH .000030 GOLD, SOLDER TAILS PLATED WITH .000150 TIN, ALL OVER .000050 NICKEL.
- △ MATERIAL: HOUSING- THERMOPLASTIC, COLOR-BLACK CONTACT- COPPER ALLOY
- △ OBSOLETE PARTS: OBSOLETE CIS STREAMLINING PER D.RENAUD/D.SINISI

	F	E	D	C	B	A	NO OF POSN	PART NUMBER	
△/△	OBSOLETE	.625	.050	1.250	1.350	27	1.530	28	7-104074-0
△		1.175	.050	2.350	2.450	49	2.630	50	6-104074-9
△		1.050	.050	2.100	2.200	44	2.380	45	6-104074-8
△		.925	.050	1.850	1.950	39	2.130	40	6-104074-7
△		.825	.050	1.650	1.750	35	1.930	36	6-104074-6
△	OBSOLETE	.600	.050	1.200	1.300	26	1.480	27	6-104074-5
△	OBSOLETE	-	.050	.950	1.050	21	1.230	22	6-104074-4
△	OBSOLETE	-	.050	.700	.800	16	.980	17	6-104074-3
△	OBSOLETE	-	.050	.500	.600	12	.780	13	6-104074-2
△		-	.050	.450	.550	11	.730	12	6-104074-1
△		-	.175	-	.350	7	.530	8	6-104074-0
△		-	.150	-	.300	6	.480	7	5-104074-9
△		-	.125	-	.250	5	.430	6	5-104074-8
△		-	.075	-	.150	3	.330	4	5-104074-7
△		.675	.050	1.350	1.450	29	1.630	30	5-104074-6
△		-	.050	1.100	1.200	24	1.380	25	5-104074-5
△		-	.050	.850	.950	19	1.130	20	5-104074-4
△		-	.050	.600	.700	14	.880	15	5-104074-3
△		-	.100	-	.200	4	.380	5	5-104074-2
△		-	.050	.350	.450	9	.630	10	5-104074-1
△	OBSOLETE	.625	.050	1.250	1.350	27	1.530	28	2-104074-0
		1.175	.050	2.350	2.450	49	2.630	50	1-104074-9
		1.050	.050	2.100	2.200	44	2.380	45	1-104074-8
		.925	.050	1.850	1.950	39	2.130	40	1-104074-7
△	SUPERSEDED BY 6-104074-6	.825	.050	1.650	1.750	35	1.930	36	1-104074-6
	OBSOLETE	.600	.050	1.200	1.300	26	1.480	27	1-104074-5
	OBSOLETE	-	.050	.950	1.050	21	1.230	22	1-104074-4
	OBSOLETE	-	.050	.700	.800	16	.980	17	1-104074-3
	OBSOLETE	-	.050	.500	.600	12	.780	13	1-104074-2
		-	.050	.450	.550	11	.730	12	1-104074-1
		-	.175	-	.350	7	.530	8	1-104074-0
△	OBSOLETE	-	.150	-	.300	6	.480	7	104074-9
		-	.125	-	.250	5	.430	6	104074-8
		-	.075	-	.150	3	.330	4	104074-7
		.675	.050	1.350	1.450	29	1.630	30	104074-6
		-	.050	1.100	1.200	24	1.380	25	104074-5
		-	.050	.850	.950	19	1.130	20	104074-4
		-	.050	.600	.700	14	.880	15	104074-3
		-	.100	-	.200	4	.380	5	104074-2
		-	.050	.350	.450	9	.630	10	104074-1

THIS DRAWING IS A CONTROLLED DOCUMENT.

DIMENSIONS: INCHES	TOLERANCES UNLESS OTHERWISE SPECIFIED:	0 PLC ± -	1 PLC ± -	2 PLC ± -	3 PLC ± .005	4 PLC ± -	ANGLES ± -
--------------------	--	-----------	-----------	-----------	--------------	-----------	------------

APPROVED: R. BROWN, D. SIMPSON, D. SIMPSON

NAME: HEADER ASSEMBLY, RIGHT ANGLE SINGLE ROW, W/SIDE & END LATCHES AMPMODU SYSTEM 50

SIZE: A1, CAGE CODE: 00779, DRAWING NO: 108-1093, 114-25031

SCALE: 4:1, SHEET: 1 OF 1, REV: T1