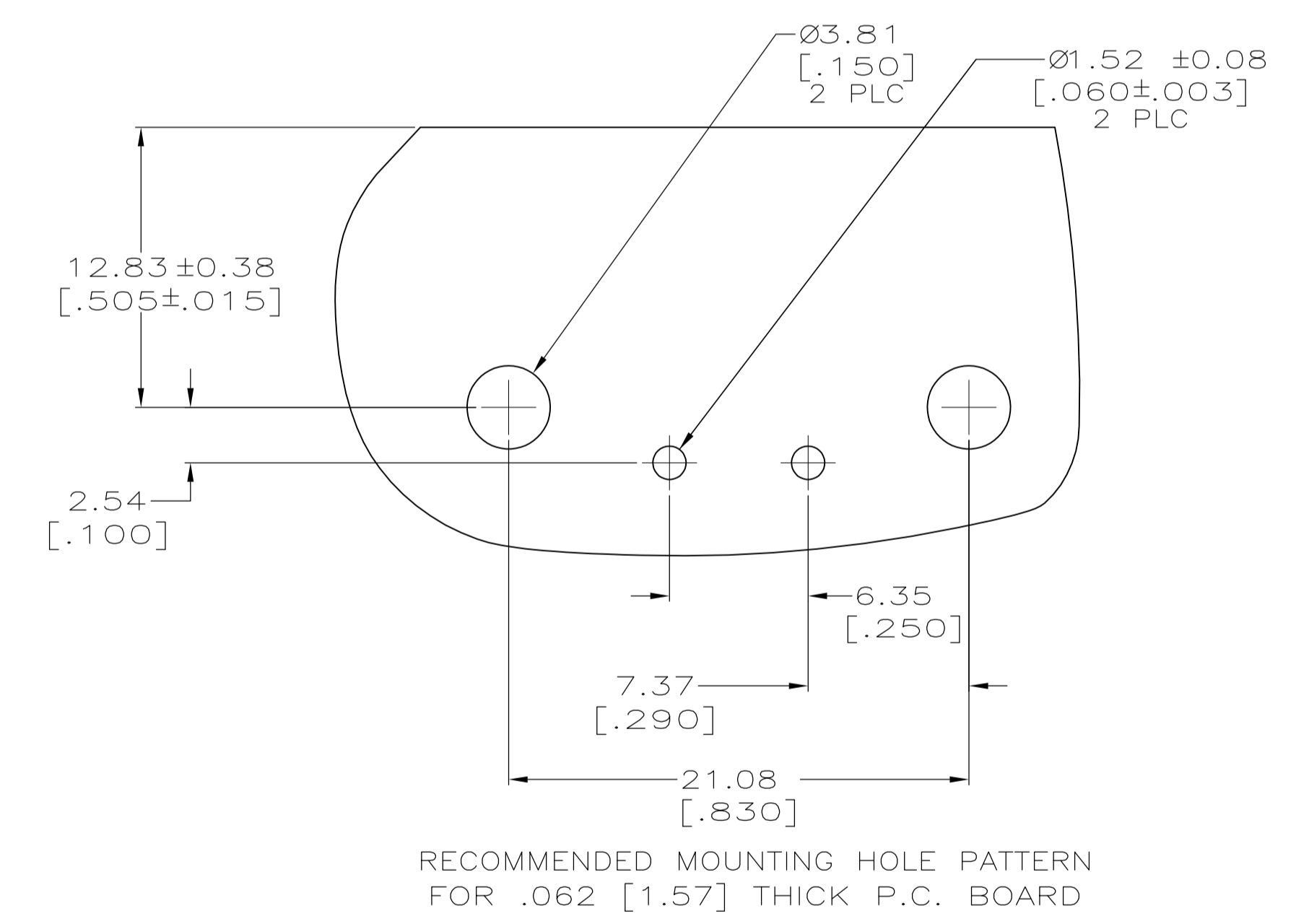
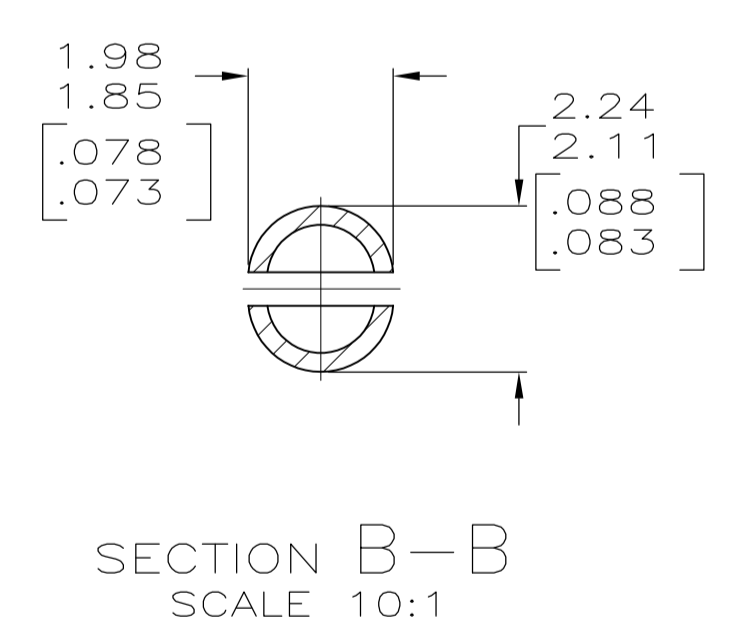
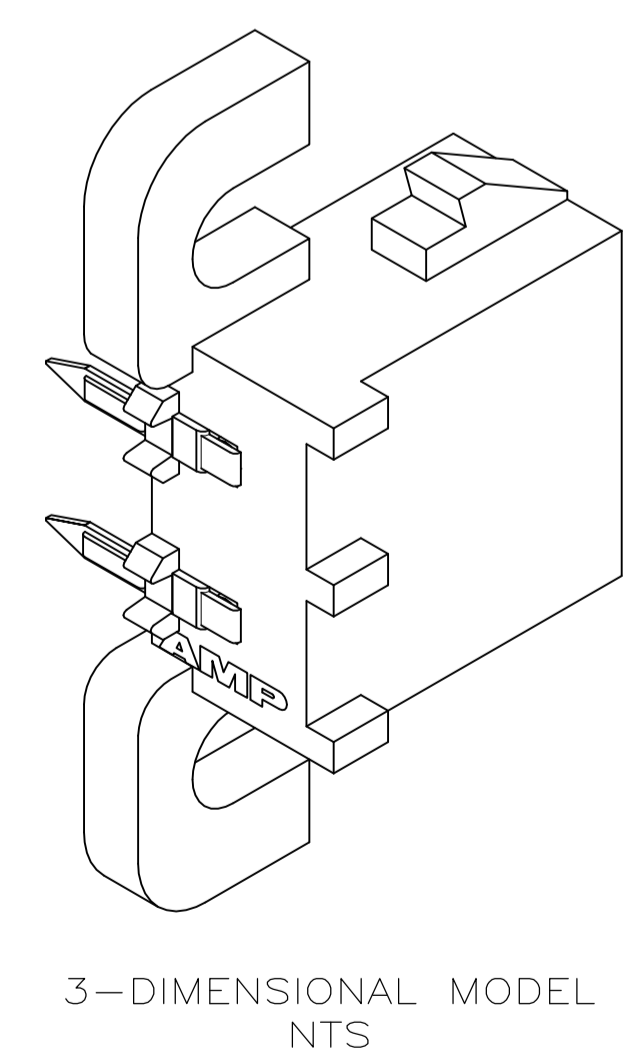
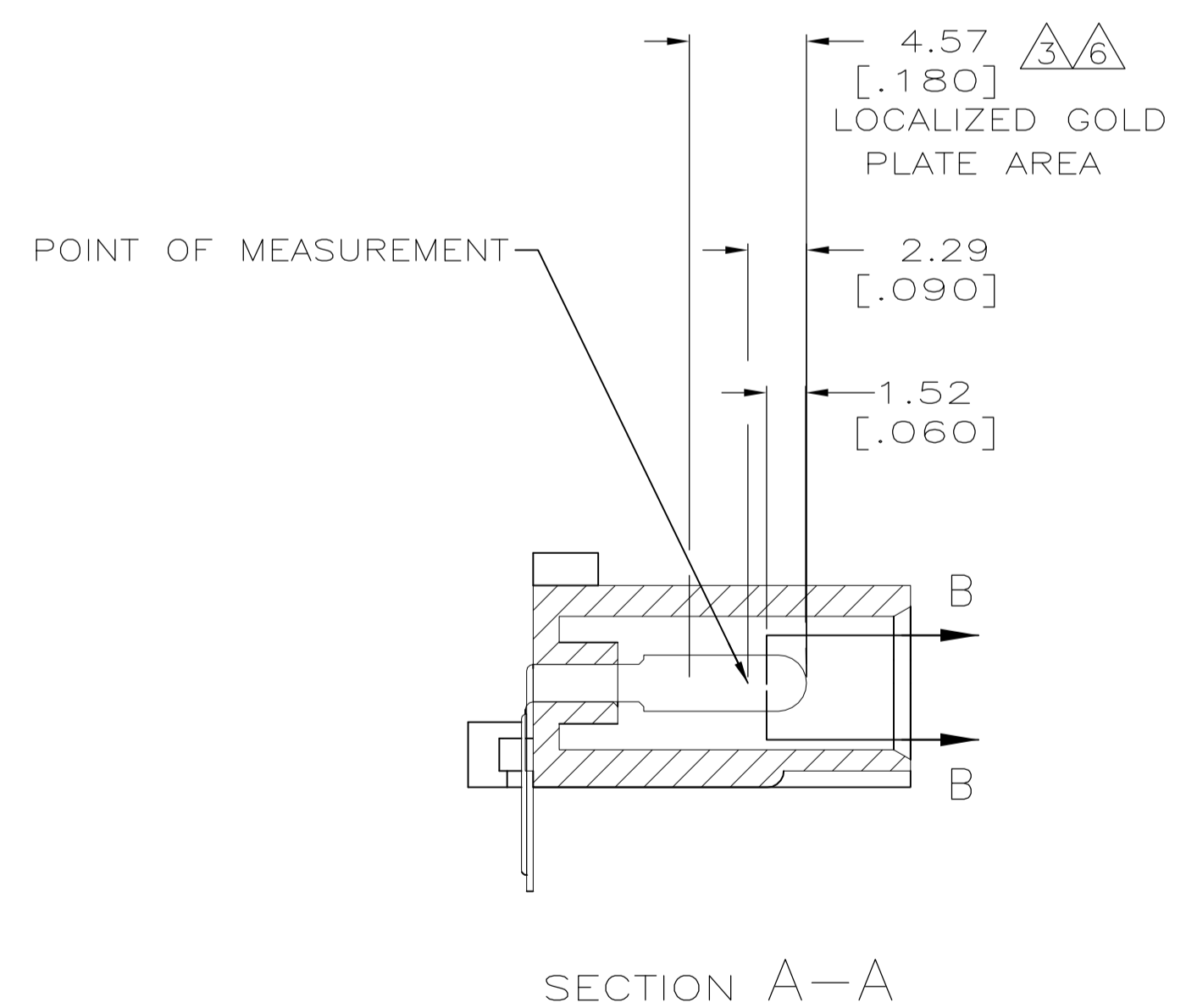
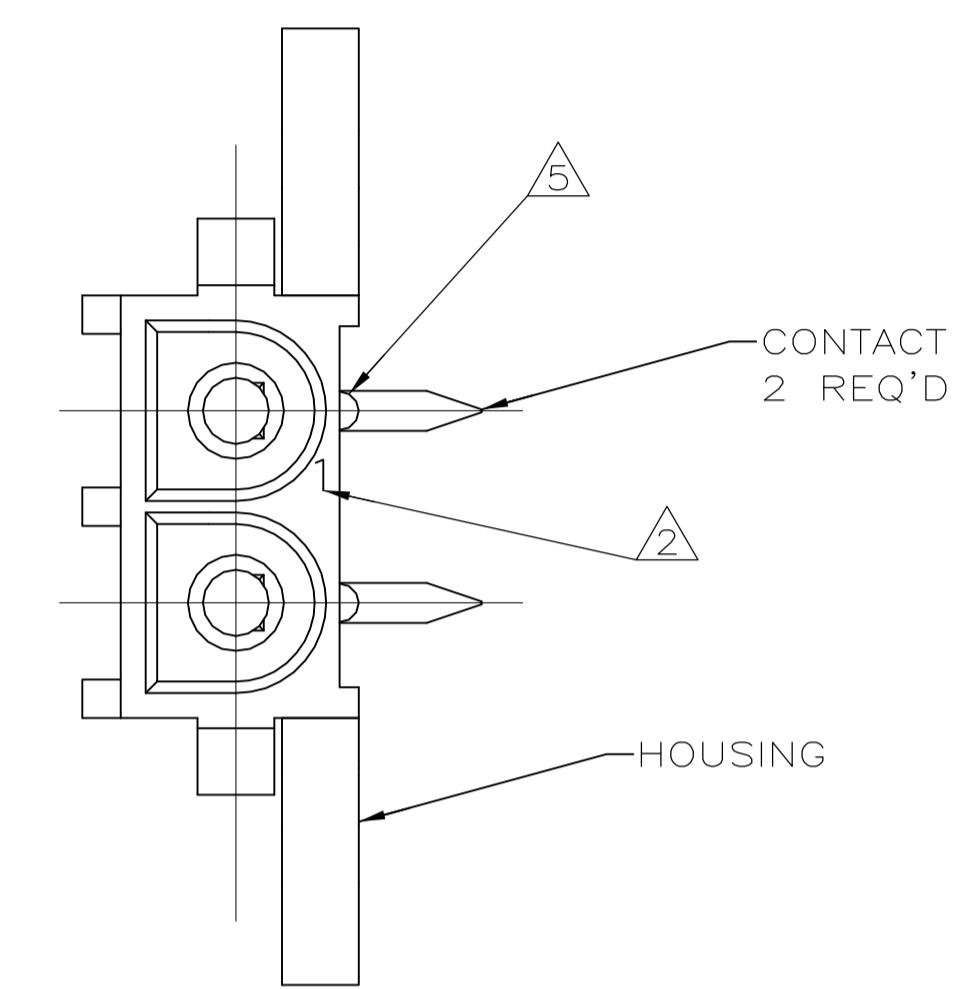
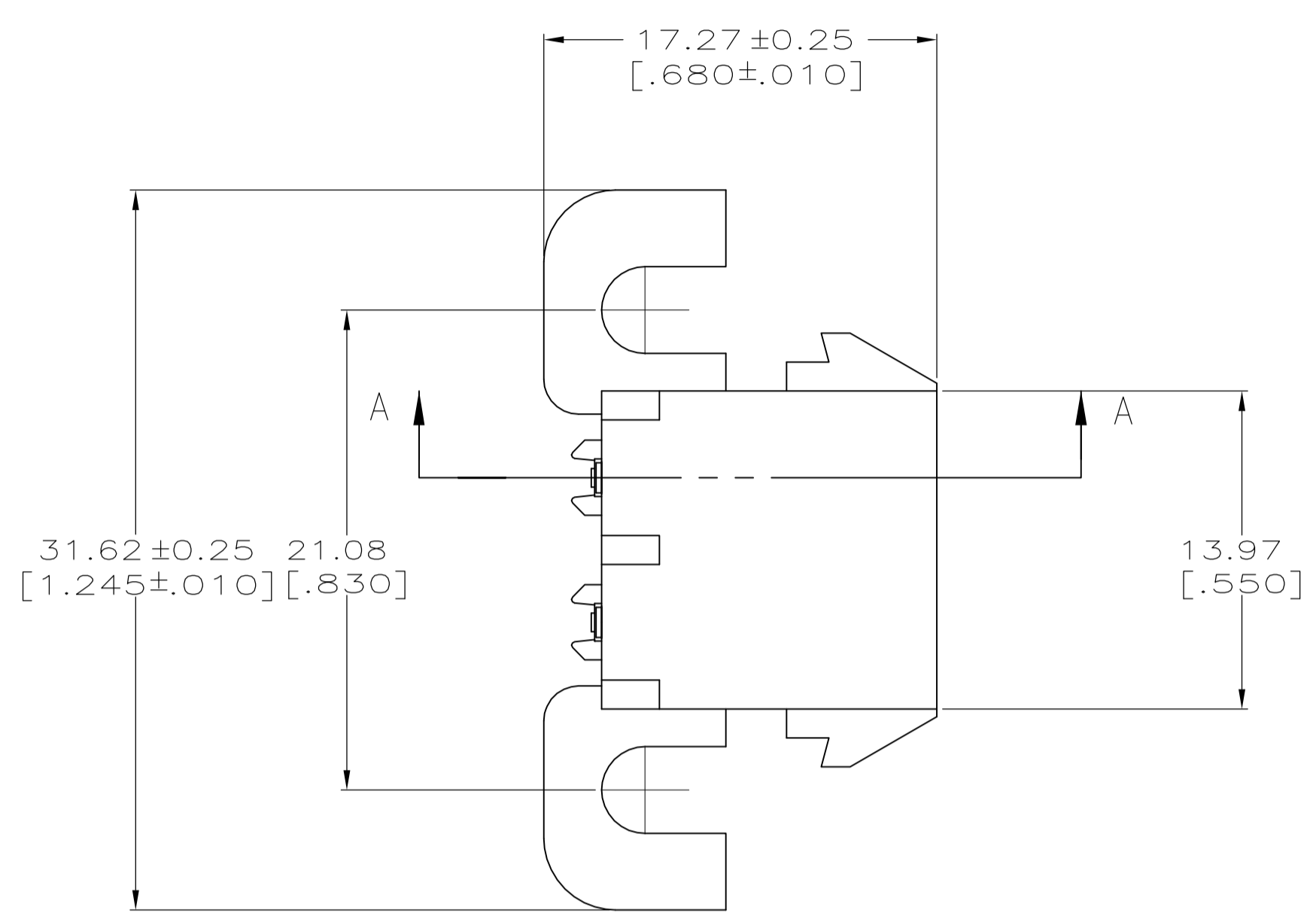
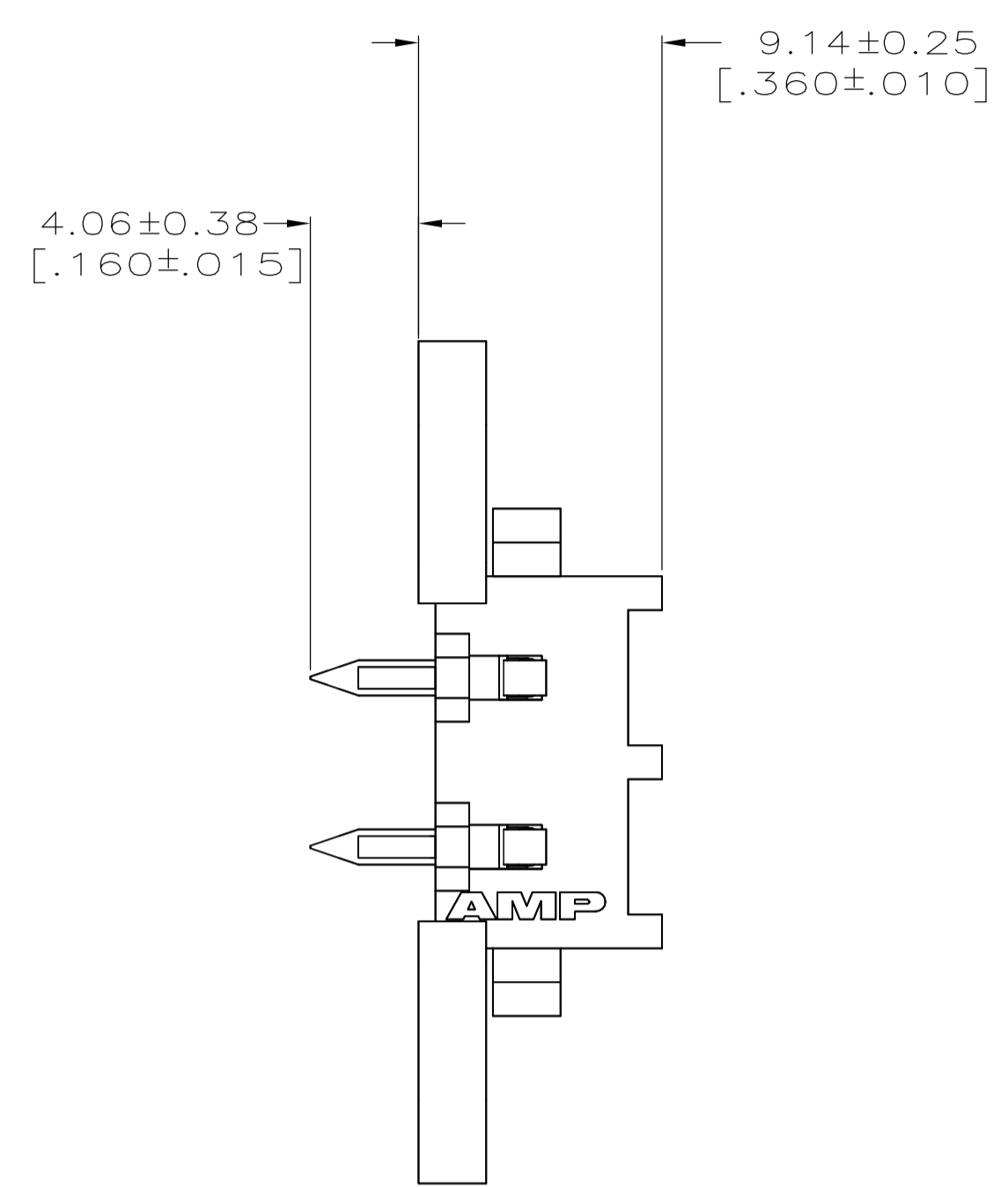


LOC		DIST		REVISIONS			
P	LTR	DATE	DESCRIPTION	DATE	DMN	APVD	
L1		11MAR11	REVISED PER ECO-11-004820		RK	HMR	

- PARTS COMPLY WITH AMP SOLDERABILITY SPECIFICATION 109-11-5.
- CIRCUIT IDENTIFICATION CHARACTERS ARE ADJACENT TO THE INDICATED CAVITIES, BUT LOCATION AND ORIENTATION MAY DIFFER FROM PRINT.
- CONTACT IS PLATED OVERALL WITH 0.00127 [.000050] MIN NICKEL, THEN 0.00076 [.000030] GOLD OVER CONTACT LENGTH INDICATED AND MATTE TIN LEAD FINISH ON SOLDER TAIL END.
- DIMENSIONS IN BRACKETS ARE IN INCHES.
- OPTIONAL CONSTRUCTION MAY DELETE THIS RIB.
- CONTACT IS PLATED OVERALL WITH 0.00127 [.000050] MIN NICKEL, THEN 0.00076 [.000030] GOLD OVER CONTACT LENGTH INDICATED AND MATTE TIN FINISH ON SOLDER TAIL END.



PH BRZ GOLD $\Delta 6$	NYLON UL 94V-O	3-350942-0
PH BRZ GOLD $\Delta 3$	NYLON UL 94V-O	2-350942-0
PH BRZ TIN	NYLON UL 94V-O	1-350942-0
CONTACT	HOUSING	PART NO

THIS DRAWING IS A CONTROLLED DOCUMENT.		DIN K. WHITAKER 22FEB2005		STE TE Connectivity	
DIMENSIONS: mm [INCHES]		CHK S. RIDGILL 22FEB2005		NAME	
TOLERANCES UNLESS OTHERWISE SPECIFIED:		APVD S. RIDGILL 22FEB2005		PRODUCT SPEC	
0 PLC ± -		APPLICATION SPEC		SIZE	
1 PLC ± -		WEIGHT		CAGE CODE	
2 PLC ± -		CUSTOMER DRAWING		DRAWING NO	
3 PLC ± 0.13 [.005]		SCALE 4:1		SHEET 1 of 1	
4 PLC ± -		REV L1		RESTRICTED TO	
ANGLES ± ± 0° 30'					
MATERIAL SEE TABLE					
FINISH SEE TABLE					

