

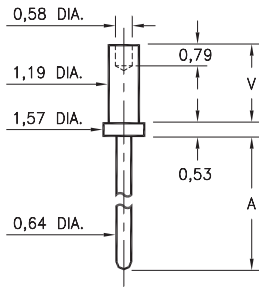
# MALE PCB PINS

## PRINTED CIRCUIT PINS

### 3130/3134

31XX-X-00-XX-00-00-08-0

Swage mount in 1,32 hole

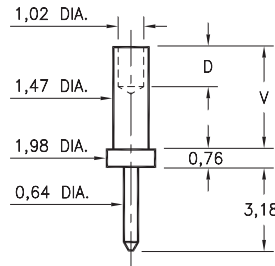


| Basic Part Number | Board Thickness | Length A | Length V |
|-------------------|-----------------|----------|----------|
| 3134-1            | 0,79            | 2,01     | 1,30     |
| 3134-2            | 1,57            | 2,01     | 2,08     |
| 3134-3            | 2,39            | 2,01     | 2,87     |
| 3134-4            | 3,18            | 2,01     | 3,68     |
| 3130-1            | 0,79            | 4,55     | 1,30     |
| 3130-2            | 1,57            | 4,55     | 2,08     |
| 3130-3            | 2,39            | 4,55     | 2,87     |
| 3130-4            | 3,18            | 4,55     | 3,68     |

### 3113

3113-X-00-XX-00-00-08-0

Swage mount in 1,57 hole

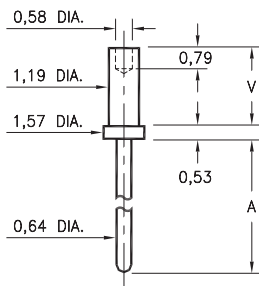


| Basic Part Number | Board Thickness | Length V | Depth D |
|-------------------|-----------------|----------|---------|
| 3113-1            | 0,79            | 1,57     | 1,02    |
| 3113-2            | 1,57            | 2,39     | 1,57    |
| 3113-3            | 2,39            | 3,18     | 1,57    |
| 3113-4            | 3,18            | 3,96     | 1,57    |

### 3151

3151-X-00-XX-00-00-08-0

Swage mount in 1,32 hole



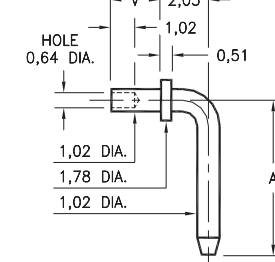
| Basic Part Number | Board Thickness | Length A | Length V |
|-------------------|-----------------|----------|----------|
| 3151-1            | 0,79            | 12,17    | 1,30     |
| 3151-2            | 1,57            | 12,17    | 2,08     |
| 3151-3            | 2,39            | 12,17    | 2,87     |
| 3151-4            | 3,18            | 12,17    | 3,68     |

### 3301 ⇌ 3304

330X-X-14-XX-00-00-08-0

Specify board thickness

Swage mount in 1,09 hole



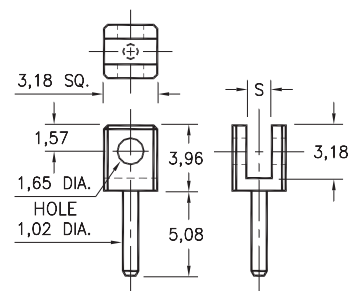
| Basic Part Number | Pin Centers A |
|-------------------|---------------|
| 3301-X            | 6,53          |
| 3302-X            | 9,07          |
| 3303-X            | 9,53          |
| 3304-X            | 14,27         |

| - X - | Board Thickness | Length V |
|-------|-----------------|----------|
| 1     | 0,79            | 1,30     |
| 2     | 1,57            | 2,08     |
| 3     | 2,39            | 2,87     |

### 3620

3620-X-32-XX-00-00-08-0

Board edge rivet mount.

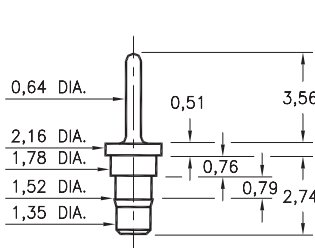


| Basic Part Number | Board Thickness | Slot S |
|-------------------|-----------------|--------|
| 3620-1            | 0,79            | 1,19   |
| 3620-2            | 1,57            | 1,91   |

### 0940

0940-0-00-XX-00-00-03-0

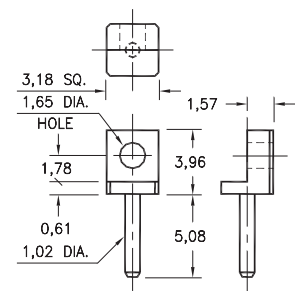
Press-fit in 1,45 mounting hole



### 3621

3621-0-32-XX-00-00-08-0

Board edge rivet mount



#### SPECIFICATIONS:

**Pin Material:** Brass Alloy 360, 1/2 Hard  
(Except swage pins which are annealed)

**Dimensions:** Millimeters

**Tolerances On:** Lengths:  $\pm 0,13$   
Diameters:  $\pm 0,051$   
Angles:  $\pm 2^\circ$



ORDER CODE: XXXX - X - 0X - XX - 00 - 00 - XX - 0

BASIC PART #

SPECIFY PIN FINISH:

- 01 5,08µm TIN/LEAD OVER NICKEL
- ◆ 80 5,08µm TIN OVER NICKEL (RoHS)
- ◆ 15 0,25µm GOLD OVER NICKEL (RoHS)
- ◆ 21 0,51µm GOLD OVER NICKEL (RoHS)
- ◆ 34 1,27µm GOLD OVER NICKEL (RoHS)



# Mouser Electronics

Authorized Distributor

Click to View Pricing, Inventory, Delivery & Lifecycle Information:

[Mill-Max:](#)

[3130-2-00-15-00-00-08-0](#) [3620-2-32-15-00-00-08-0](#) [3621-0-32-34-00-00-08-0](#) [3113-4-00-00-00-00-08-0](#)