

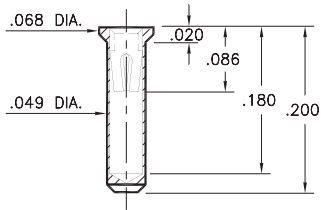
PIN RECEPTACLES

FOR .015" - .025" DIAMETER PINS

0660

0660-0-15-XX-30-XX-10-0

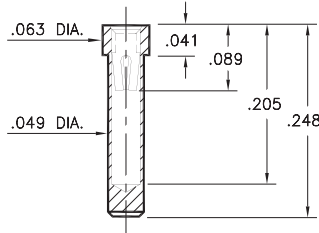
Solder mount in .051 min. mounting hole



0677

0677-0-15-XX-30-XX-10-0

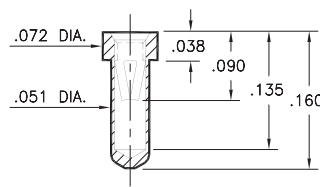
Solder mount in .051 min. mounting hole
Also available on 24mm wide carrier tape:
1,200 parts per 13" reel
Order as: 0677-0-57-XX-30-XX-10-0



0555

0555-0-15-XX-32-XX-10-0

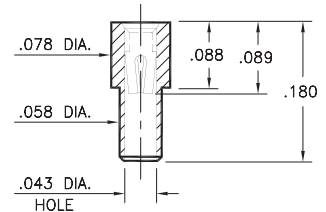
Solder mount in .053 min. mounting hole
Also available on 16mm wide carrier tape:
1,800 parts per 13" reel
See page 194.4 for Tape & Reel details



0558

0558-0-15-XX-30-XX-10-0

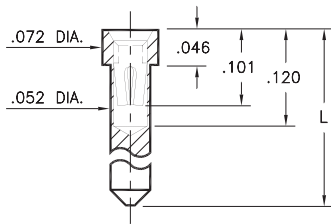
Solder mount in .061 min. mounting hole



0675/0679

067X-0-15-XX-30-XX-10-0

Solder mount in .054 min. mounting hole

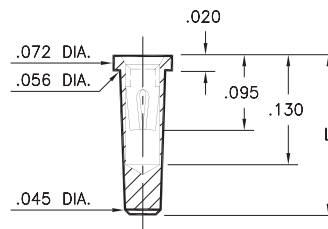


Basic Part Number	Length L
0675-0	.145
0679-0	.203

1065/1066/7065

X06X-0-15-XX-30-XX-10-0

Solder mount in .055 min. mounting hole

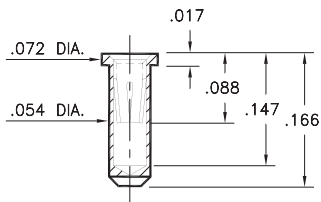


Basic Part Number	Length L
1065-0	.190
1066-0	.160
7065-0	.181

0682

0682-0-15-XX-32-XX-10-0

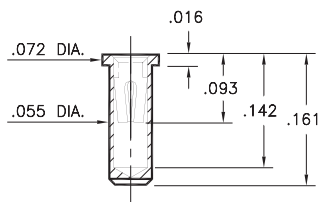
Solder mount in .056 min. mounting hole
Also available on 16mm wide carrier tape:
1,500 parts per 13" reel
See page 194.4 for Tape & Reel details



0667

0667-0-15-XX-30-XX-10-0

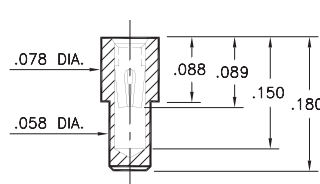
Solder mount in .057 min. mounting hole
Also available on 16mm wide carrier tape:
1,700 parts per 13" reel
See page 194.3 for Tape & Reel details



0665

0665-0-15-XX-30-XX-10-0

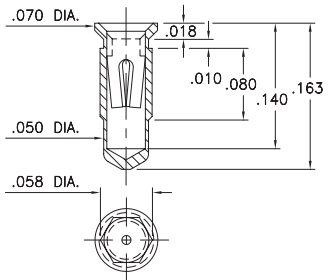
Solder mount in .061 min. mounting hole
Also available on 16mm wide carrier tape:
1,580 parts per 13" reel
See page 194.3 for Tape & Reel details



4286

4286-0-15-XX-30-XX-10-0

Hex press-fit in .055 plated through-hole



SPECIFICATIONS:

Shell Material: Brass Alloy 360, 1/2 Hard

Contact Material: Beryllium Copper Alloy 172, HT

Dimensions: Inches

Tolerances On: Lengths: ±.005

Diameters: ±.002

Angles: ± 2°



ORDER CODE: XXXX - X - XX - XX - XX - XX - 10 - 0

BASIC PART #

SPECIFY SHELL FINISH:

01 200 μ" TIN/LEAD OVER NICKEL

◆ 80 200 μ" TIN OVER NICKEL (RoHS)

◆ 15 10 μ" GOLD OVER NICKEL (RoHS)

SPECIFY CONTACT FINISH:

02 100 μ" TIN/LEAD OVER NICKEL

◆ 84 100 μ" TIN OVER NICKEL (RoHS)

◆ 27 30 μ" GOLD OVER NICKEL (RoHS)

SELECT CONTACT:

#30 or #32 CONTACT (DATA ON PAGE 253)

(For alternate contact choices, see groups B and C on page 248)



Mouser Electronics

Authorized Distributor

Click to View Pricing, Inventory, Delivery & Lifecycle Information:

Mill-Max:

[0682-0-15-01-32-27-10-0](#) [0677-0-15-80-30-27-10-0](#) [0665-0-15-80-30-27-10-0](#) [0660-0-15-80-30-84-10-0](#) [0555-0-15-15-30-27-10-0](#) [0667-0-15-15-30-27-10-0](#) [0677-0-15-15-30-27-10-0](#) [1066-0-15-01-30-02-10-0](#) [0677-0-15-01-30-27-10-0](#) [0667-0-15-01-30-27-10-0](#) [0665-0-15-01-30-27-10-0](#) [0677-0-15-01-32-27-10-0](#) [0555-0-15-01-30-27-10-0](#) [0665-0-15-15-30-27-10-0](#) [0558-0-15-15-30-27-10-0](#) [1066-0-15-01-30-27-10-0](#) [1065-0-15-01-30-02-10-0](#) [1065-0-15-01-30-27-10-0](#) [0682-0-15-01-32-02-10-0](#) [0679-0-15-01-30-02-10-0](#) [0679-0-15-01-30-27-10-0](#) [0677-0-15-01-30-02-10-0](#) [0675-0-15-01-30-02-10-0](#) [0675-0-15-01-30-27-10-0](#) [0667-0-15-01-30-02-10-0](#) [0665-0-15-01-30-02-10-0](#) [0660-0-15-01-30-02-10-0](#) [0660-0-15-01-30-27-10-0](#) [0558-0-15-01-30-02-10-0](#) [0558-0-15-01-30-27-10-0](#) [0555-0-15-01-20-02-10-0](#) [0555-0-15-01-20-27-10-0](#) [0555-0-15-15-20-27-10-0](#) [0660-0-15-15-30-27-10-0](#) [0675-0-15-15-30-27-10-0](#) [0679-0-15-15-30-27-10-0](#) [0682-0-15-15-32-27-10-0](#) [1065-0-15-15-30-27-10-0](#) [1066-0-15-15-30-27-10-0](#) [1065-0-15-00-00-00-10-0](#) [0665-0-15-00-00-00-10-0](#) [0555-0-15-00-00-00-10-0](#) [0677-0-15-00-00-00-10-0](#) [0558-0-15-00-00-00-10-0](#) [0675-0-15-00-00-00-10-0](#) [0682-0-15-00-00-00-10-0](#) [0660-0-15-00-00-00-10-0](#) [1066-0-15-00-00-00-10-0](#) [0679-0-15-00-00-00-10-0](#) [0667-0-15-00-00-00-10-0](#) [7065-0-15-00-00-00-10-0](#) [0679-0-15-80-30-14-10-0](#) [0677-0-15-80-30-14-10-0](#) [0660-0-15-80-30-14-10-0](#) [0665-0-15-01-30-14-10-0](#) [0555-0-15-80-20-14-10-0](#) [0665-0-15-80-30-14-10-0](#) [0675-0-15-01-30-14-10-0](#) [1066-0-15-80-30-14-10-0](#) [0558-0-15-80-30-14-10-0](#) [0555-0-15-01-20-14-10-0](#) [0667-0-15-01-30-14-10-0](#) [0667-0-15-80-30-14-10-0](#) [0682-0-15-80-32-14-10-0](#) [0682-0-15-01-32-14-10-0](#) [0558-0-15-01-30-14-10-0](#) [0679-0-15-01-30-14-10-0](#) [1066-0-15-01-30-14-10-0](#) [1065-0-15-80-30-14-10-0](#) [0675-0-15-80-30-14-10-0](#) [1065-0-15-01-30-14-10-0](#) [0677-0-15-01-30-14-10-0](#) [0555-0-15-80-32-14-10-0](#) [0555-0-15-15-20-14-10-0](#) [0555-0-15-01-32-02-10-0](#) [0555-0-15-15-32-27-10-0](#) [0555-0-15-15-30-14-10-0](#) [0667-0-15-15-30-14-10-0](#) [0677-0-15-15-30-14-10-0](#) [0555-0-15-80-30-27-10-0](#) [0679-0-15-15-30-14-10-0](#) [0555-0-15-80-30-84-10-0](#) [0555-0-15-01-32-27-10-0](#) [0555-0-15-80-32-84-10-0](#) [0555-0-15-01-32-14-10-0](#) [0555-0-15-80-32-27-10-0](#) [0555-0-15-01-30-02-10-0](#) [0660-0-15-15-30-14-10-0](#) [0555-0-15-15-32-14-10-0](#) [0555-0-15-01-30-14-10-0](#) [0555-0-15-80-30-14-10-0](#) [7065-0-15-01-30-14-10-0](#) [7065-0-15-80-30-14-10-0](#)