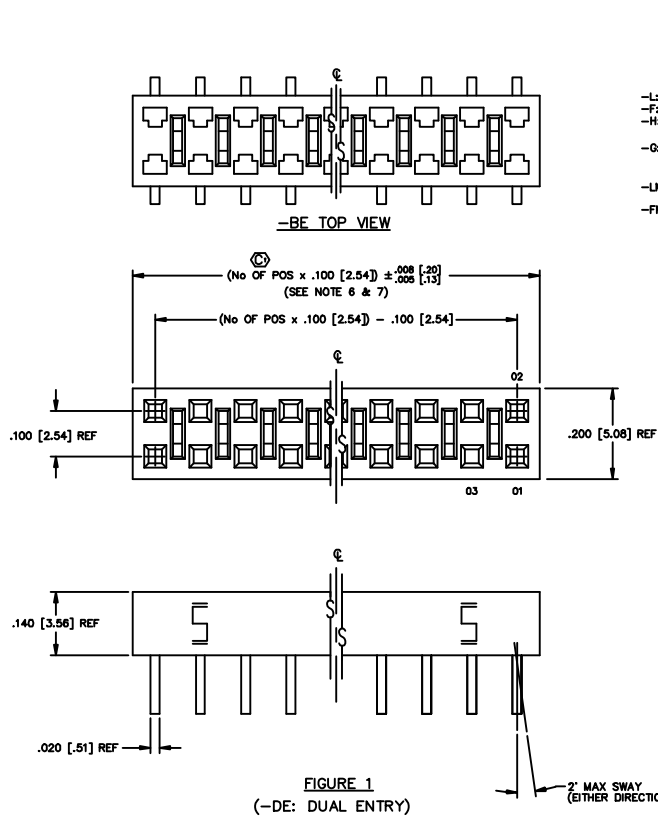


DIMENSIONS ARE IN INCHES		UNLESS OTHERWISE NOTED		TOLERANCES AND ANGLES		TITLE	DWG NO.
ONE PLACE DECIMALS: ±.1 [2.5]	THREE PLACE DECIMALS: ±.005 [.127]			±2°		LOW PROFILE SOCKET STRIP	CLH-1XX-XX-X-XX-X-XX
TWO PLACE DECIMALS: ±.01 [.25]	FOUR PLACE DECIMALS: ±.0020 [.0508]						SHEET 1 OF 2



OPTION

-TR: TAPE & REEL (29 POSITION MAX)

OPTION

-P: PICK AND PLACE PAD (SEE FIGURE 6)
 AVAILABLE ON POSITIONS 03 THRU 50 ONLY

-A: ALIGNMENT PIN (N/A ON -PE, -TE, AND -DE, SEE FIG. 7 & 8 SHT 2)
 (-4 POS MIN)

-LC: LOCKING CLIP (N/A ON -TE AND -DE, SEE FIG. 7 & 8 SHT 2)

-K: POLYAMIDE FILM PAD (AVAILABLE ON POS 03 THRU 50 ONLY)
 (.005 [.13] THICKNESS WITH SILICONE ADHESIVE)
 (SEE FIG 9, SHT 2) (USE K-500-300)
 (AVAILABLE FOR ENTRY STYLE-DV AND -BE ONLY.)

ENTRY STYLE

-DV: SURFACE MOUNT (SEE TABLE 1 & FIG. 2)

-DE: DUAL ENTRY (SEE TABLE 1 & FIG. 1)

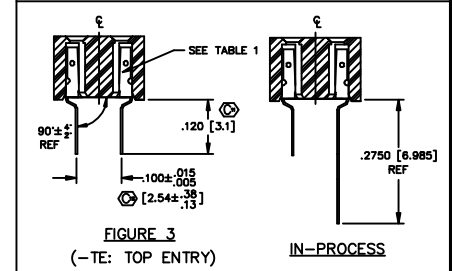
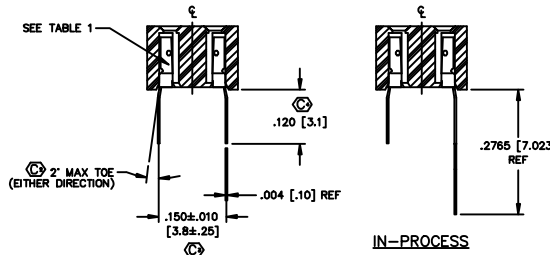
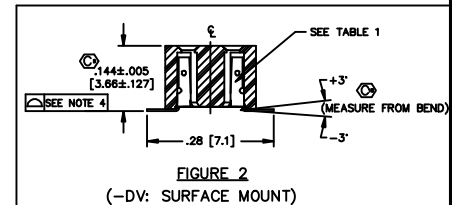
-TE: TOP ENTRY (SEE TABLE 1 & FIG. 3)

-PE: PASS-THROUGH ENTRY (SEE TABLE 1 & FIG. 4)

-BE: BOTTOM MOUNT ENTRY (SEE TABLE 1 & FIG. 5)

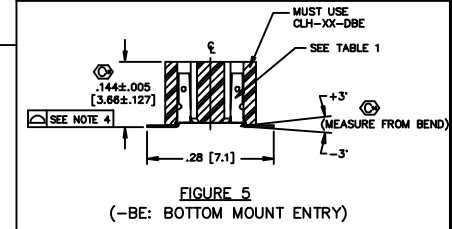
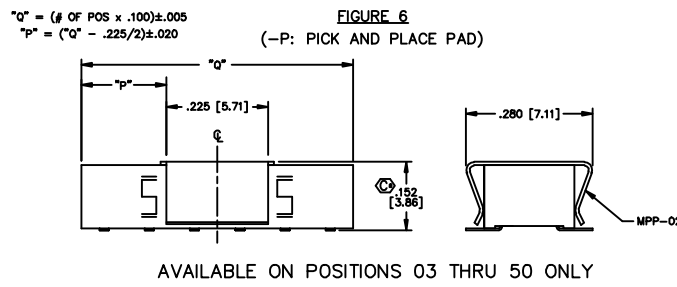
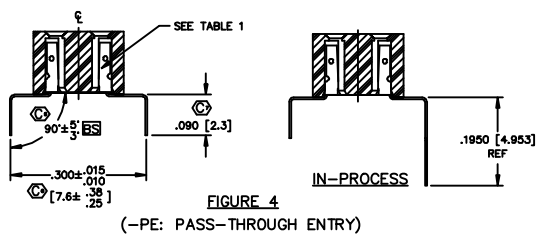
- NOTES:
- PUSHOUT FORCE TO BE: 1 lb. MIN.
 - [] DIMENSIONS ARE IN MILLIMETERS.
 - PARTS TO BE SYMMETRICAL ABOUT C.
 - FOR POSITIONS -02 THRU -40, COPLANARITY TO BE .004; FOR POSITIONS -41 THRU -51, COPLANARITY TO BE .006.
 - TUBE POSITIONS 03 THRU 51; LAYER PACKAGE POSITION 02. (-PE CAN BE TUBED 02 THRU 51)
 - WILL LOSE A POSITION FOR EVERY CUT MADE ON A SOCKET STRIP; CUT FLASH TO BE .010 [.25] MAX WITH NO FLASH ALLOWED IN HOLES OR EXTENDING BELOW LEADS.
 - ENDWALL AFTER CUTTING: .0255±.003
 - MAX BURR: .003
 - ⊕ REPRESENTS A CRITICAL DIMENSION.

ENTRY SPEC	CONTACT	INSULATOR
-DE (SEE FIG. 1)	C-73-03-X-X	CLH-XX-D
-DV (SEE FIG. 2)	C-73-01-X-X	CLH-XX-D
-TE (SEE FIG. 3)	C-73-02-X-X	CLH-XX-D
-PE (SEE FIG. 4)	C-73-04-X-X	CLH-XX-D
-BE (SEE FIG. 5)	C-73-01-X-X	CLH-XX-DBE



ENTRY SPECIFICATION STYLES

DIFFERENT AS SHOWN, OTHERWISE SAME AS FIG. 1



IMPORTANT NOTE

THE MANUFACTURER ASSUMES NO LIABILITY FOR DAMAGE TO PROPERTY OR PERSONS ARISING FROM THE USE OF THIS PRODUCT. THE USER SHALL BE RESPONSIBLE FOR THE PROPER SELECTION AND USE OF THIS PRODUCT. THE USER SHALL BE RESPONSIBLE FOR THE PROPER SELECTION AND USE OF THIS PRODUCT.

MATERIAL:

BODY: VECTRA E130

CONTACT: 521 PHOSPHOR BRONZE FULL HARD

DATE: 08/22/02

520 PARK EAST BLVD. NEW ALBANY, INDIANA 47150

PHONE (812) 944-8733 P.O. BOX 1147

CODE 58322

8263PROJ/ASSEMBLY/100 CLH-ASMT

DATE: PURVIS 10-4-94

CLH-1XX-XX-X-XX-X-XX

SHEET 1 OF 2

Mouser Electronics

Authorized Distributor

Click to View Pricing, Inventory, Delivery & Lifecycle Information:

Samtec:

[CLH-120-F-D-BE](#) [CLH-106-F-D-BE](#) [CLH-102-L-D-DV](#) [CLH-112-L-D-BE](#) [CLH-102-F-D-DV](#) [CLH-104-F-D-DV](#) [CLH-105-F-D-DV](#) [CLH-103-L-D-BE](#) [CLH-120-L-D-DV](#) [CLH-103-F-D-BE](#) [CLH-103-F-D-DV](#) [CLH-105-F-D-BE](#) [CLH-112-F-D-BE](#) [CLH-117-F-D-BE](#) [CLH-106-F-D-DV](#) [CLH-107-F-D-DV](#) [CLH-108-F-D-BE](#) [CLH-109-F-D-DV](#) [CLH-110-F-D-DV](#) [CLH-112-F-D-DV](#) [CLH-107-L-D-BE-A](#) [CLH-125-F-D-BE](#)