

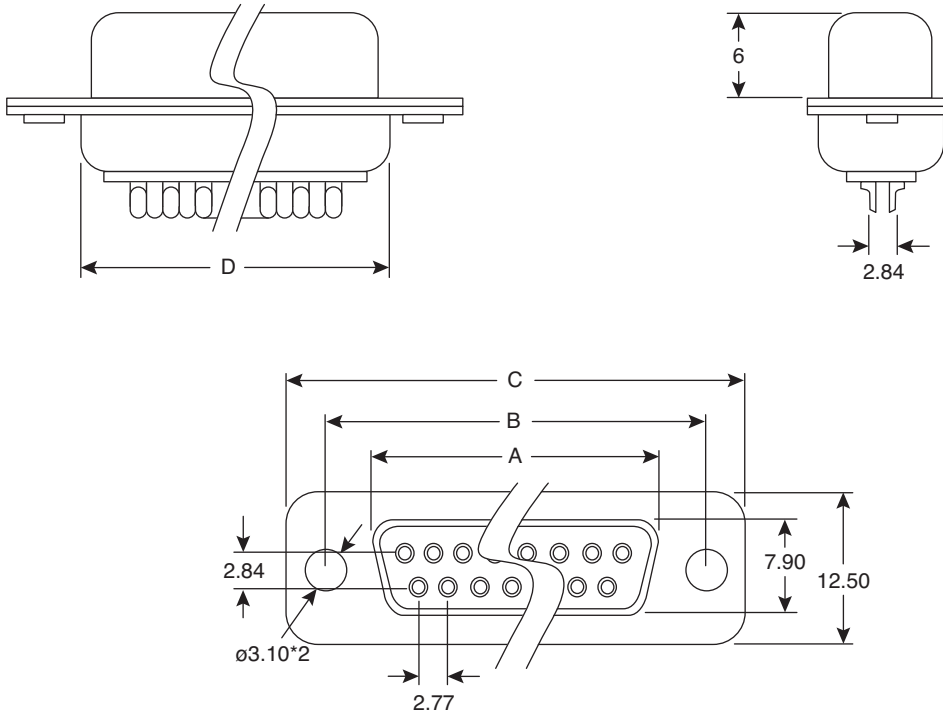
D-Sub Connectors Female

156-1309T-E, 156-1315T-E,
156-1325T-E, 156-1337T-E



D-Sub Connectors Female

156-1309T-E, 156-1315T-E, 156-1325T-E, 156-1337T-E



MOUSER STOCK NO.	Position	A	B	C	D
156-1309T-E	9F	16.30	25.00	30.80	19.20
156-1315T-E	15F	24.60	33.30	39.20	27.70
156-1325T-E	25F	38.30	47.10	53.10	41.10
156-1337T-E	37F	54.80	63.50	69.40	57.30

Dimensions: mm

MATERIAL SPECIFICATIONS	
Insulator:	Thermal Plastic
Contacts:	Copper Alloy
Shell:	Steel
Rivet, Boardlock:	Copper Alloy, Contact Plating
Underplated:	50μ"~100μ" Nickel
Contact Area:	1μ"~50μ" Selective Gold
Solder Tails Area:	100μ"~200μ" Tin/Lead (Brighten Tin) or 100μ"~200μ" Tin/Lead Free (Brighten Tin/Matte Tin)

ELECTRICAL SPECIFICATIONS	
Operation Voltage:	250 VAC Max.
Current Rating:	3 Amps Max.
Contact Resistance:	15 mΩ Max.
Insulation Resistance:	3000 MΩ Min. @ 500 VDC
Dielectric Withstanding Voltage:	1000 VAC / Minute
Temperature Range:	-55°C +105°C
RoHS Compliant	

Date Last Revised: 6-13-12

Available from Mouser Electronics
1-800-346-6873 / www.mouser.com

KC-301312

Specifications are subject to change without notice. No liability or warranty implied by this information. Environmental compliance based on producer documentation.

Mouser Electronics

Authorized Distributor

Click to View Pricing, Inventory, Delivery & Lifecycle Information:

[Kobiconn:](#)

[156-1315T-E](#) [156-1337T-E](#) [156-1309T-E](#) [156-1325T-E](#)