



**TP-106-01-09**

Components Corporation

[Buy Now](#)



Looking for a discount?

[Check out our current promotions!](#)

Give us a call

**1-855-837-4225**

International: 1-415-281-3866

## Email Us

Sales and New Orders: [sales@verical.com](mailto:sales@verical.com)

Order Support: [support@verical.com](mailto:support@verical.com)

Suppliers: [Visit our seller page](#)

## Company Address

Arrow Electronics, Inc  
9201 East Dry Creek Road  
Centennial, CO 80112

## TP-106 Series

### Oval Profile Printed Circuit Test Points



Home

>> [Products](#)

>> [Through Hole](#)

[Surface Mount](#)

[Custom Wireform](#)

[News](#)

[About Us](#)

[Distributor &  
Representative](#)

[Search](#)

[Contact Us](#)

[Check Stock](#)

[Compliance](#)

[Site Map](#)

## Specifications

### Materials:

**Contact Material:** .015" x .030" phosphor bronze #510 alloy

**Finish:** .0001" Matte Tin over .00005" Nickel

**Standoff:** 15% glass filled polyester

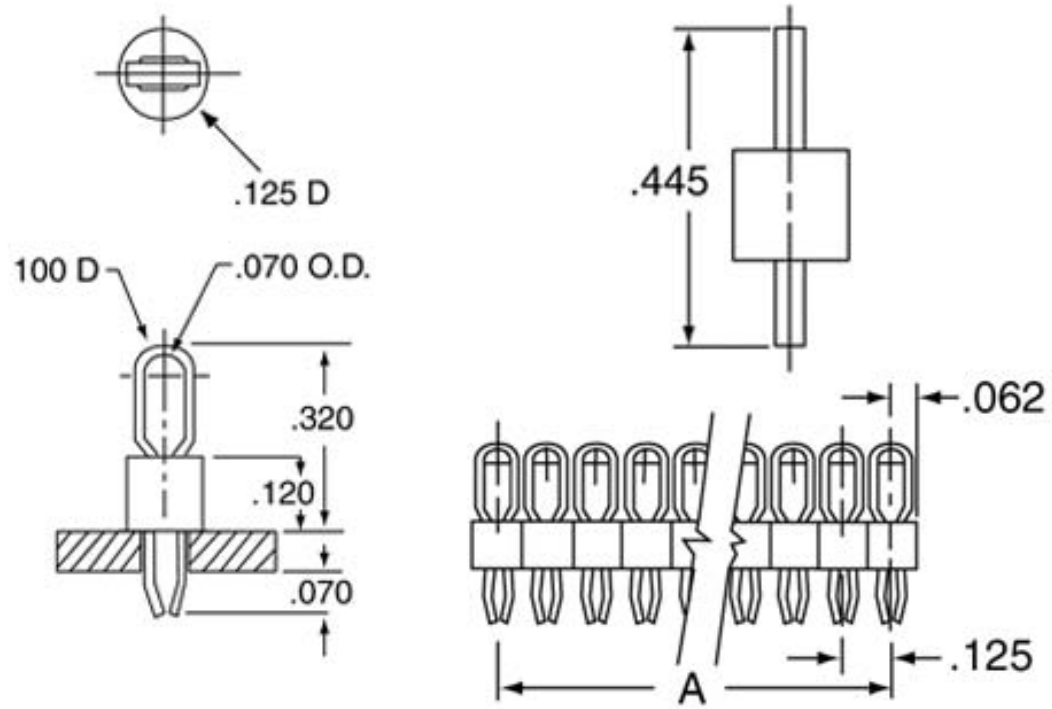
### Electrical:

**Mounting Holes:** .063" diameter hole

### Special Notations:

The specifically designed hand tool, part number 1060, speeds cutting, gripping and insertion of TP-106 test points.

**TP-106  
Contacts**

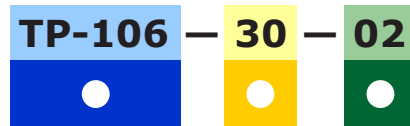


## TP-106 Dimensions

| Part Number | Dimension A | Part Number | Dimension A |
|-------------|-------------|-------------|-------------|
| TP-106-01   | NA          | TP-106-16   | 1.875       |
| TP-106-02   | .125        | TP-106-17   | 2.000       |
| TP-106-03   | .250        | TP-106-18   | 2.125       |
| TP-106-04   | .375        | TP-106-19   | 2.250       |
| TP-106-05   | .500        | TP-106-20   | 2.375       |
| TP-106-06   | .625        | TP-106-21   | 2.500       |
| TP-106-07   | .750        | TP-106-22   | 2.625       |
| TP-106-08   | .875        | TP-106-23   | 2.750       |
| TP-106-09   | 1.000       | TP-106-24   | 2.875       |
| TP-106-10   | 1.125       | TP-106-25   | 3.000       |
| TP-106-11   | 1.250       | TP-106-26   | 3.125       |
| TP-106-12   | 1.375       | TP-106-27   | 3.250       |
| TP-106-13   | 1.500       | TP-106-28   | 3.375       |
| TP-106-14   | 1.625       | TP-106-29   | 3.500       |
| TP-106-15   | 1.750       | TP-106-30   | 3.625       |

## Ordering Information

Example:



● **Series Designation:**  
TP-106

● **Number of Positions:**  
01 through 30

● **Color:**

|             |             |
|-------------|-------------|
| 00 = Black  | 05 = Green  |
| 01 = Brown  | 06 = Blue   |
| 02 = Red    | 07 = Purple |
| 03 = Orange | 08 = Gray   |
| 04 = Yellow | 09 = White  |

## Product Description

---

The new TP-106 series of oval profile, color-coded printed circuit board test points from Components Corporation represents a significant, yet simple, solution to the board level testing of today's highly populated printed wiring boards. With a choice of ten colors, TP-106 test point may be utilized as numeric points to represent the standard electronic color code, enhance visibility, or designate polarity. The oval loop design of the test point contact provides a profile which stands above crowded circuitry, offers a positive anchor for spring loaded clips or probe tips and is large enough to terminate conventional alligator clips. These features enhance the reliability of obtaining correct test readings while reducing the potential for damage to adjacent circuitry caused by shorted test probes.

The color-coded standoff of the TP-106 is molded from 30% glass filled polyester which is designed to withstand the temperatures of production wave soldering processes and resist board cleaning solvents or chemicals. The oval contact element is precision formed from matte tin over nickel plated phosphor bronze spring alloy, and its unique leg design provides positive retention in the mounting hole during assembly operations and soldering.

TP-106 test points are manufactured in a "breakaway" strip format which allows them to be specified in any number of positions, from 1 to 30, at 0.125", mounting centers. This exclusive design feature provides the easy placement of multiple, tandem mounted test points in one assembly operation. The TP-106 user has the option of procuring these units pre-cut to specified position or obtaining them in full 30 position strips and cutting them to desired number of tandem test points through use of a convenient hand tool.

### **Certificate of Compliance with Directive 2002/95/EC RoHS**

This is to certify that Components Corporation designs, manufactures and supplies products to our customers that are in compliance with directive 2002/95/EC. This also pertains to procurement of raw material, component parts and processes.



Top  
of Page

[Open this page as a PDF document](#)

**Components Corporation**

6 Kinsey Place Denville, NJ 07834 USA

**voice:** 866.4.COMPCO **fax:** 973.361.5801 **email:** sales@componentscorp.com

©2003 Components Corporation. All Rights Reserved. [Legal Statement](#). [Privacy Notice](#).