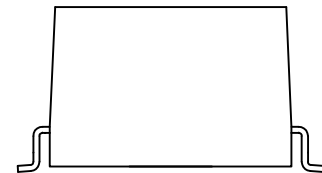
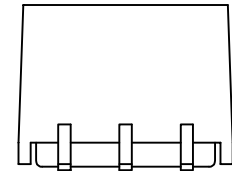
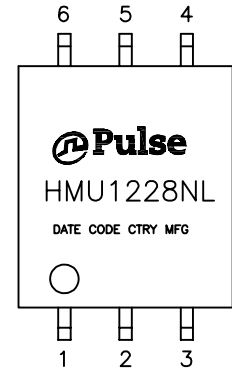




NOTES:

1. ROHS COMPLIANT
2. STORAGE TEMPERATURE: -50°C TO +125°C
3. COMPLIANCE TO J-STD:
 - A. J-STD-002: SOLDERABILITY AT 245°C REFLOW PROFILE
 - B. J-STD-020: LEVEL 1, NO MOISTURE SENSITIVE
 - C. J-STD-075: R7, 245°C MAXIMUM THROUGH REFLOW SOLDER
4. TO ORDER TAPE & REEL PACKAGING ADD A "T" SUFFIX TO THE PART NUMBER(i.e HXXXXXXXXNL BECOMES HXXXXXXXXNLT).

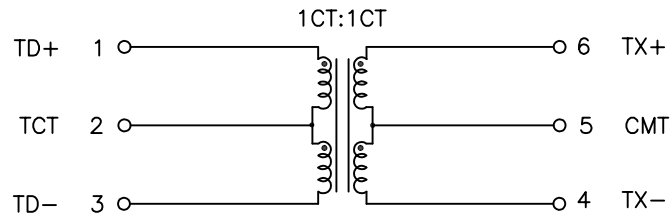
ISOLATION CATAGORY: BASIC
 WORKING VOLTAGE : 1000VDC
 CREEPAGE DISTANCE : 10 mm MIN
 CLEARANCE DISTANCE : 7 mm MIN
 WIRE TYPE:- IE TEFLON COATED 1/2 LAYER INSULATION PER IEC 60950 ANNEX U.



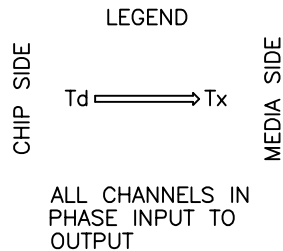
FINAL OUTLINE

© Copyright, 2017. Pulse Electronics Corp. All rights reserved. Pulse confidential & proprietary. (08/16/17)

PRODUCT DESCRIPTION	TLA DRAWING	PS DRAWING	SHEET	PART NO.	DATASHEET REV.
MDL,SIN,100D,1:1,SM,TU	HMU1228NL-11	PS-2431.001-B	1 OF 3	HMU1228NL	F



SCHEMATIC



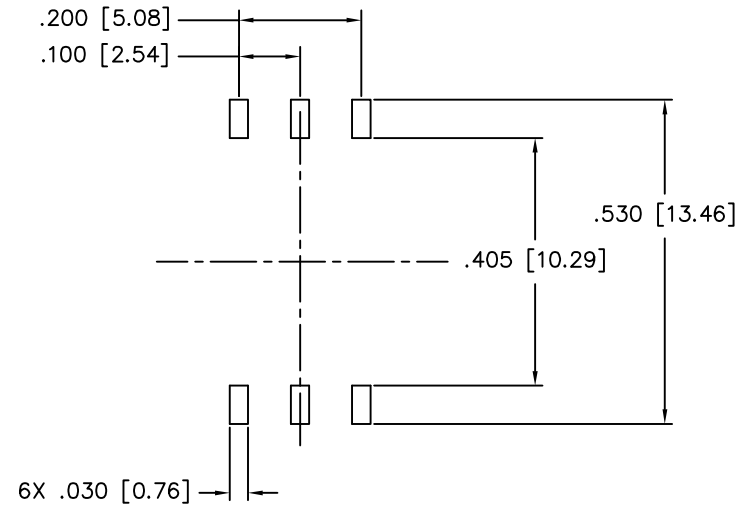
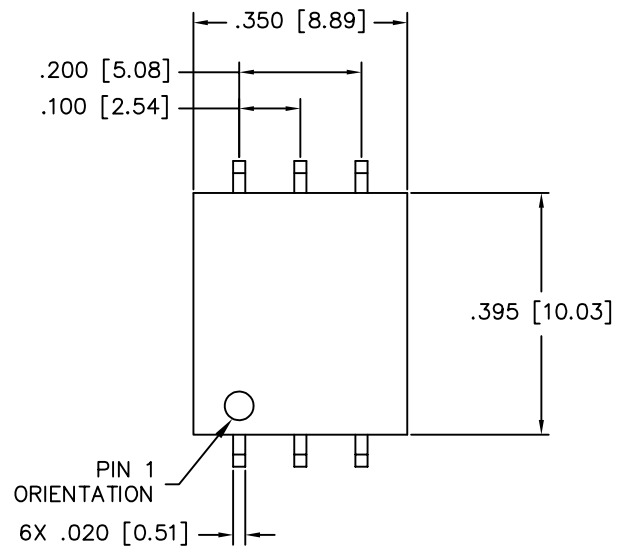
ELECTRICAL CHARACTERISTICS AT +25°C UNLESS OTHER SPECIFIED
MEETS IEEE 802.3 SPECIFICATION

PARAMETER	SPECIFICATIONS		
OPERATING TEMP	-40°C TO +125°C		
TURNS RATIO	1 : 1 ±2%		
POLARITY	PER SCHEMATIC		
▽ INDUCTANCE (OCL) AT 100 kHz, 100 mV (-40°C TO +125°C)	150 uH MIN, 370 uH MAX		
▽ INSERTION LOSS	1-60 MHz	80 MHz	125 MHz
	-1.0 dB MAX	-1.25 dB TYP	-3.0 dB MAX
RETURN LOSS Z _{OUT} = 100 OHMS	4 MHz	30-80 MHz	
	-16 dB MIN	-14 + 20*LOG ₁₀ (f/30 MHz) dB MIN	
▽ INPUT - OUTPUT ISOLATION	4300 VDC FOR 60 SECONDS		

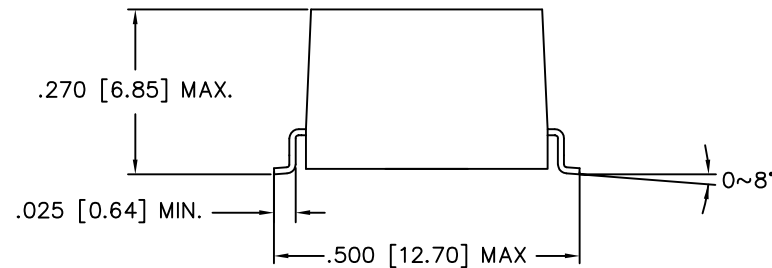
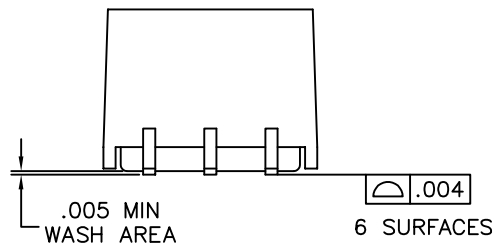
- NOTE: 1. f IS FREQUENCY IN MHZ.
2. "▽" IS SPECIAL CHARACTERISTIC.

© Copyright, 2017. Pulse Electronics Corp. All rights reserved. Pulse confidential & proprietary. (08/16/17)

PRODUCT DESCRIPTION	TLA DRAWING	PS DRAWING	SHEET	PART NO.	DATASHEET REV.
MDL,SIN,100D,1:1,SM,TU	HMU1228NL-11	PS-2431.001-B	2 OF 3	HMU1228NL	F



SUGGESTED LAND PATTERN



DIMENSIONS ARE IN INCHES [MILLIMETERS] WITH THE FOLLOWING TOLERANCES: [MILLIMETERS] ARE FOR REFERENCE ONLY.

.XX= ±.01 [±0.25]

.XXX= ±.005 [±0.13]

© Copyright, 2017. Pulse Electronics Corp. All rights reserved. Pulse confidential & proprietary. (08/16/17)

PRODUCT DESCRIPTION	TLA DRAWING	PS DRAWING	SHEET	PART NO.	DATASHEET REV.
MDL,SIN,100D,1:1,SM,TU	HMU1228NL-11	PS-2431.001-B	3 OF 3	HMU1228NL	F

Mouser Electronics

Authorized Distributor

Click to View Pricing, Inventory, Delivery & Lifecycle Information:

Pulse:

[HMU1228NL](#) [HMU1228NLT](#)