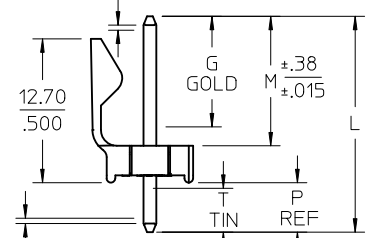
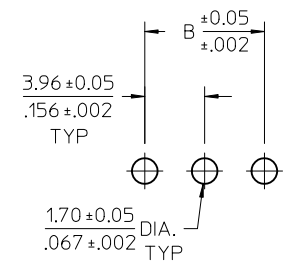
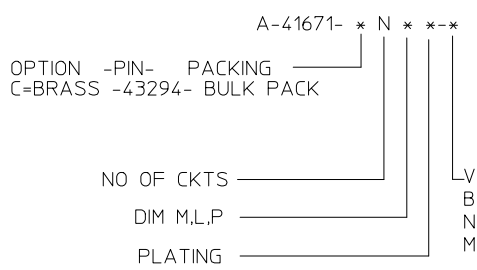


1.3
.05
CENTERLINE OF PIN IN AREA SHOWN NOT TO VARY FROM CENTERLINE OF PIN AT -D- BY MORE THAN 0.20/.008 IN ANY DIRECTION.



1.3
.05
CENTERLINE OF PIN IN AREA SHOWN NOT TO VARY FROM CENTERLINE OF PIN AT DATUM -D- BY MORE THAN 0.13/.005 IN ANY DIRECTION.



PCB LAYOUT: COMPONENT SIDE
RECOMMENDED PCB THICKNESS:
1.57 ± .18 / .062 ± .007

2-*	AK1
1	AK1
SHT	REV

ADD 41671-3469	DESCRIPTION
EC NO: UCP2012-1605	REV
DRWN: NGUYEN	
CH'KD: MKIPPER	
APPR: FSMITH	
AK1	

QUALITY SYMBOLS	GENERAL TOLERANCES (UNLESS SPECIFIED)	
	mm	INCH
$\nabla = 0$	4 PLACES ± ---	± ---
$\nabla = 0$	3 PLACES ± ---	± .010
$\nabla = 0$	2 PLACES ± 0.25	± .015
$\nabla = 0$	1 PLACE ± 0.38	± ---
	ANGULAR ± 1/2°	
	DRAFT WHERE APPLICABLE MUST REMAIN WITHIN DIMENSIONS	

DIMENSION STYLE	
MM/IN	
DRAWN BY	DATE
JSCHAFFER	2004/04/05
CHECKED BY	DATE
KSAMIEC	2004/04/05
APPROVED BY	DATE
MARGULIS	2004/04/05
MATERIAL NO.	
SEE CHART	

SCALE 1.5:1	DESIGN UNITS INCH	THIRD ANGLE PROJECTION
TITLE KK 156 HEADER ASSEMBLY FRICTION LOCK STRAIGHT BREAKAWAY		
MOLEX MOLEX INCORPORATED		
DOCUMENT NO. SD-41671-001	SHEET NO. 1 OF *	
THIS DRAWING CONTAINS INFORMATION THAT IS PROPRIETARY TO MOLEX INCORPORATED AND SHOULD NOT BE USED WITHOUT WRITTEN PERMISSION		

- NOTES:
- MATERIAL: POLYESTER, 94V-0, MOLDED BLACK
 - FINISH: PER ES-88
 - (197) OVERALL REFLOWED MATTE TIN: 0.00152/.000060 MIN. OVER 0.00127/.000050 MIN. NICKEL OVERALL
 - (222) OVERALL MATTE TIN: 0.00254/.000100 MIN. OVERALL NICKEL: 0.00127/.000050 MIN.
 - (208) SELECT GOLD: 0.00038/.000015 MIN. SELECT TIN: 0.00254/.000100 MIN., OVERALL NICKEL UNDERPLATE: 0.00127/.000050 MIN.
 - (228) SELECT GOLD: 0.00076/.000030 MIN., SELECT TIN: 0.00254/.000100 MIN., OVERALL NICKEL UNDERPLATE: 0.00127/.000050 MIN.
 - (241) SELECT GOLD: 0.00051/.000020 MIN. SELECT TIN: 0.00254/.000100 MIN. OVERALL NICKEL UNDERPLATE: 0.00127/.000050 MIN.
 - PRODUCT SPECIFICATION: PS-08-50.
 - PACKAGING INFO: SEE TABLE.
 - SOLDERABILITY: PER SMES-152.
 - PIN PUSH-OUT FORCE: PRIOR TO SOLDERING, 3 LB MIN. FORCE IN EITHER DIRECTION SHALL BE REQUIRED TO PUSH THE PIN OUT OF THE HEADER.
 - PARTS ARE STACKABLE END TO END ON 3.96/.156 CENTERS. (SPACING TABS MUST BE REMOVED ON CIRCUIT SIZES 1-23 BEFORE PARTS ARE STACKABLE.)
 - THIS PART CONFORMS TO CLASS B REQUIREMENTS OF COSMETIC SPECIFICATION PS-45499-002.

CKT	B	A
2	3.96 .156	6.78/7.87 .267/3.10
3	7.92 .312	10.74/11.84 .423/4.66
4	11.89 .468	14.71/15.80 .579/6.22
5	15.85 .624	18.67/19.76 .735/7.78
6	19.81 .780	22.63/23.72 .891/9.34
7	23.77 .936	26.59/27.69 1.047/1.090
8	27.74 1.092	30.56/31.65 1.203/1.246
9	31.70 1.248	34.52/35.61 1.359/1.402
10	35.66 1.404	38.48/39.57 1.515/1.558
11	39.62 1.560	42.44/43.54 1.671/1.714
12	43.59 1.716	46.41/47.50 1.827/1.870
13	47.55 1.872	50.37/51.46 1.983/2.026
14	51.51 2.028	54.33/55.42 2.139/2.182
15	55.47 2.184	58.29/59.39 2.295/2.338
16	59.44 2.340	62.26/63.35 2.451/2.494
17	63.40 2.496	66.22/67.31 2.607/2.650
18	67.36 2.652	70.18/71.27 2.763/2.806
19	71.32 2.808	74.14/75.23 2.919/2.962
20	75.29 2.964	78.11/79.20 3.075/3.118
21	79.25 3.120	82.07/83.16 3.231/3.274
22	83.21 3.276	86.03/87.12 3.387/3.430
23	87.17 3.432	89.94/91.08 3.541/3.586
24	91.14 3.588	93.85/95.00 3.695/3.740

	Group No:	A-41671-CNA197	Group No:	A-41671-CNA208	Group No:	A-41671-CNA228
	Pin No:	43294-0240	Pin No:	43294-0236	Pin No:	43294-0237
	Plating:	197 TIN	Plating:	208 15 GOLD	Plating:	228 30 GOLD
	Pin Length L	.750 / 19.05	Pin Length L	.750 / 19.05	Pin Length L	.750 / 19.05
	Mating M	.450 / 11.43	Mating M	.450 / 11.43	Mating M	.450 / 11.43
	Gold Loc G	NA	Gold Loc G	.270 / 6.86	Gold Loc G	.270 / 6.86
	PC Tail P	.172 / 4.37	PC Tail P	.172 / 4.37	PC Tail P	.172 / 4.37
	Tin Loc T	OVERALL	Tin Loc T	.160 / 4.06	Tin Loc T	.160 / 4.06
	Voided Ckts	NONE	Voided Ckts	NONE	Voided Ckts	NONE
	Pack Per	PK-41671-001	Pack Per	PK-41671-001	Pack Per	PK-41671-001
Ckts	Material No	Engineer Number	Material No	Engineer Number	Material No	Engineer Number
2	26-48-1025	A-41671-C02A197	41671-0001	A-41671-C02A208	41671-0024	A-41671-C02A228
3	26-48-1035	A-41671-C03A197	41671-0002	A-41671-C03A208	41671-0025	A-41671-C03A228
4	26-48-1045	A-41671-C04A197	41671-0003	A-41671-C04A208	41671-0026	A-41671-C04A228
5	26-48-1055	A-41671-C05A197	41671-0004	A-41671-C05A208	41671-0027	A-41671-C05A228
6	26-48-1065	A-41671-C06A197	41671-0005	A-41671-C06A208	41671-0028	A-41671-C06A228
7	26-48-1075	A-41671-C07A197	41671-0006	A-41671-C07A208	41671-0029	A-41671-C07A228
8	26-48-1085	A-41671-C08A197	41671-0007	A-41671-C08A208	41671-0030	A-41671-C08A228
9	26-48-1095	A-41671-C09A197	41671-0008	A-41671-C09A208	41671-0031	A-41671-C09A228
10	26-48-1105	A-41671-C10A197	41671-0009	A-41671-C10A208	41671-0032	A-41671-C10A228
11	26-48-1115	A-41671-C11A197	41671-0010	A-41671-C11A208	41671-0033	A-41671-C11A228
12	26-48-1125	A-41671-C12A197	41671-0011	A-41671-C12A208	41671-0034	A-41671-C12A228
13	26-48-1135	A-41671-C13A197	41671-0012	A-41671-C13A208	41671-0035	A-41671-C13A228
14	26-48-1145	A-41671-C14A197	41671-0013	A-41671-C14A208	41671-0036	A-41671-C14A228
15	26-48-1155	A-41671-C15A197	41671-0014	A-41671-C15A208	41671-0037	A-41671-C15A228
16	26-48-1165	A-41671-C16A197	41671-0015	A-41671-C16A208	41671-0038	A-41671-C16A228
17	26-48-1175	A-41671-C17A197	41671-0016	A-41671-C17A208	41671-0039	A-41671-C17A228
18	26-48-1185	A-41671-C18A197	41671-0017	A-41671-C18A208	41671-0040	A-41671-C18A228
19	26-48-1195	A-41671-C19A197	41671-0018	A-41671-C19A208	41671-0041	A-41671-C19A228
20	26-48-1205	A-41671-C20A197	41671-0019	A-41671-C20A208	41671-0042	A-41671-C20A228
21	26-48-1215	A-41671-C21A197	41671-0020	A-41671-C21A208	41671-0043	A-41671-C21A228
22	26-48-1225	A-41671-C22A197	41671-0021	A-41671-C22A208	41671-0044	A-41671-C22A228
23	26-48-1235	A-41671-C23A197	41671-0022	A-41671-C23A208	41671-0045	A-41671-C23A228
24	26-48-1245	A-41671-C24A197	41671-0023	A-41671-C24A208	41671-0046	A-41671-C24A228
	STD TIN CATALOG PRODUCT		STD 15 GOLD CATALOG PRODUCT		STD 30 GOLD CATALOG PRODUCT	

<u>REV:</u> AK1	<u>ECR/ECN INFORMATION:</u> EC. NO. UCP2012-1605 DATE: 12/6/2011	<u>TITLE:</u> KK .156 HEADER ASSEMBLY FRICTION LOCK STRAIGHT 2-24 CKTS.	<u>SHEET No.</u> - 2 -
<u>DOCUMENT NUMBER:</u> SD - 41671 - 001		<u>CREATED / REVISED BY:</u> NNGUYEN	<u>CHECKED BY:</u> MKIPPER
		<u>APPROVED BY:</u> FSMITH	

Group No:	A-41671-CNA241
Pin No:	43294-0241
Plating:	241 GOLD
Pin Length L	.750 / 19.05
Mating M	.450 / 11.43
Gold Loc G	.270 / 6.86
PC Tail P	.172 / 4.37
Tin Loc T	.160 / 4.06
Voided Ckts	NONE
Pack Per	PK-41671-001

Group No:	A-41671-CNA228
Pin No:	43294-0237
Plating:	228 GOLD
Pin Length L	.750 / 19.05
Mating M	.450 / 11.43
Gold Loc G	.270 / 6.86
PC Tail P	.172 / 4.37
Tin Loc T	.160 / 4.06
Voided Ckts	NONE
Pack Per	PK-41671-001

Group No:	A-41671-CND197
Pin No:	43294-0193
Plating:	197 TIN
Pin Length L	.700 / 17.78
Mating M	.447 / 11.35
Gold Loc G	NA
PC Tail P	.125 / 3.18
Tin Loc T	OVERALL
Voided Ckts	NONE
Pack Per	PK-41671-001

Group No:	A-41671-CNB197
Pin No:	43294-0240
Plating:	197 TIN
Pin Length L	.750 / 19.05
Mating M	.523 / 13.28
Gold Loc G	NA
PC Tail P	.099 / 2.51
Tin Loc T	OVERALL
Voided Ckts	NONE
Pack Per	PK-41671-001

Ckts
2
3
4
5
6
7
8
9
10
11
12
13
14
15
16
17
18
19
20
21
22
23
24

Material No	Engineer Number
26-48-2025	A-41671-C02A241
26-48-2035	A-41671-C03A241
26-48-2045	A-41671-C04A241
26-48-2055	A-41671-C05A241
26-48-2065	A-41671-C06A241
26-48-2075	A-41671-C07A241
26-48-2085	A-41671-C08A241
26-48-2095	A-41671-C09A241
26-48-2105	A-41671-C10A241
26-48-2115	A-41671-C11A241
26-48-2125	A-41671-C12A241
26-48-2135	A-41671-C13A241
26-48-2145	A-41671-C14A241
26-48-2155	A-41671-C15A241
26-48-2165	A-41671-C16A241
26-48-2175	A-41671-C17A241
26-48-2185	A-41671-C18A241
26-48-2195	A-41671-C19A241
26-48-2205	A-41671-C20A241
26-48-2215	A-41671-C21A241
26-48-2225	A-41671-C22A241
26-48-2235	A-41671-C23A241
26-48-2245	A-41671-C24A241

Material No	Engineer Number
26-48-9026	A-41671-C02A228
41671-0047	A-41671-C03A228
41671-0048	A-41671-C04A228
26-48-9056	A-41671-C05A228
41671-0049	A-41671-C06A228
41671-0050	A-41671-C07A228
41671-0051	A-41671-C08A228
26-48-9096	A-41671-C09A228
26-48-9106	A-41671-C10A228
41671-0052	A-41671-C11A228
26-48-9126	A-41671-C12A228
41671-0053	A-41671-C13A228
41671-0054	A-41671-C14A228
41671-0055	A-41671-C15A228
41671-0056	A-41671-C16A228
41671-0057	A-41671-C17A228
41671-0058	A-41671-C18A228
41671-0059	A-41671-C19A228
41671-0060	A-41671-C20A228
41671-0061	A-41671-C21A228
41671-0062	A-41671-C22A228
41671-0063	A-41671-C23A228
26-48-9246	A-41671-C24A228

Material No	Engineer Number
26-48-9023	A-41671-C02D197
26-48-9033	A-41671-C03D197
26-48-9043	A-41671-C04D197
26-48-9053	A-41671-C05D197
26-48-9063	A-41671-C06D197
26-48-9073	A-41671-C07D197
26-48-9083	A-41671-C08D197
26-48-9093	A-41671-C09D197
26-48-9103	A-41671-C10D197
26-48-9113	A-41671-C11D197
26-48-9123	A-41671-C12D197
26-48-9133	A-41671-C13D197
26-48-9143	A-41671-C14D197
26-48-9153	A-41671-C15D197
26-48-9163	A-41671-C16D197
26-48-9173	A-41671-C17D197
26-48-9183	A-41671-C18D197
26-48-9193	A-41671-C19D197
26-48-9203	A-41671-C20D197
26-48-9213	A-41671-C21D197
26-48-9223	A-41671-C22D197
26-48-9233	A-41671-C23D197
26-48-9243	A-41671-C24D197

Material No	Engineer Number
41671-0064	A-41671-C02B197
41671-0065	A-41671-C03B197
41671-0066	A-41671-C04B197
41671-0067	A-41671-C05B197
41671-0068	A-41671-C06B197
41671-0069	A-41671-C07B197
41671-0070	A-41671-C08B197
26-48-6095	A-41671-C09B197
41671-0071	A-41671-C10B197
41671-0072	A-41671-C11B197
41671-0073	A-41671-C12B197
41671-0074	A-41671-C13B197
41671-0075	A-41671-C14B197
41671-0076	A-41671-C15B197
41671-0077	A-41671-C16B197
41671-0078	A-41671-C17B197
41671-0079	A-41671-C18B197
41671-0080	A-41671-C19B197
41671-0081	A-41671-C20B197
41671-0082	A-41671-C21B197
41671-0083	A-41671-C22B197
41671-0084	A-41671-C23B197
26-48-6245	A-41671-C24B197

<u>REV:</u> AK1	<u>ECR/ECN INFORMATION:</u> EC. NO. UCP2012-1605 DATE: 12/6/2011	<u>TITLE:</u> KK .156 HEADER ASSEMBLY FRICTION LOCK STRAIGHT 2-24 CKTS.	<u>SHEET No.</u> - 3 -
<u>DOCUMENT NUMBER:</u> SD - 41671 - 001		<u>CREATED / REVISED BY:</u> NNGUYEN	<u>CHECKED BY:</u> MKIPPER
		<u>APPROVED BY:</u> FSMITH	

Group No:	A-41671-CNF197
Pin No:	43294-0283
Plating:	197 TIN
Pin Length L	.800 / 20.32
Mating M	.480 / 12.19
Gold Loc G	NA
PC Tail P	.192 / 4.88
Tin Loc T	OVERALL
Voided Ckts	NONE
Pack Per	PK-41671-001

Group No:	A-41671-CNB241
Pin No:	43294-0241
Plating:	241 GOLD
Pin Length L	.750 / 19.05
Mating M	.523 / 13.28
Gold Loc G	.270/ 6.86
PC Tail P	.099 / 2.51
Tin Loc T	.160/ 4.06
Voided Ckts	NONE
Pack Per	PK-41671-001

Group No:	A-41671-CNF241
Pin No:	43294-0284
Plating:	241 GOLD
Pin Length L	.800 / 20.32
Mating M	.480 / 12.19
Gold Loc G	.350/ 8.89
PC Tail P	.192 / 4.88
Tin Loc T	.200/ 5.08
Voided Ckts	NONE
Pack Per	PK-41671-001

Group No:	A-41671-CNN197
Pin No:	43294-0500
Plating:	197 TIN
Pin Length L	1.030 / 26.16
Mating M	.448 / 11.38
Gold Loc G	NA
PC Tail P	.454 / 11.53
Tin Loc T	OVERALL
Voided Ckts	NONE
Pack Per	PK-41671-001

Ckts
2
3
4
5
6
7
8
9
10
11
12
13
14
15
16
17
18
19
20
21
22
23
24

Material No	Engineer Number
26-48-4026	A-41671-C02F197
26-48-4036	A-41671-C03F197
26-48-4046	A-41671-C04F197
26-48-4056	A-41671-C05F197
26-48-4066	A-41671-C06F197
26-48-4076	A-41671-C07F197
26-48-4086	A-41671-C08F197
26-48-4096	A-41671-C09F197
26-48-4106	A-41671-C10F197
26-48-4116	A-41671-C11F197
26-48-4126	A-41671-C12F197
26-48-4136	A-41671-C13F197
26-48-4146	A-41671-C14F197
26-48-4156	A-41671-C15F197
26-48-4166	A-41671-C16F197
26-48-4176	A-41671-C17F197
26-48-4186	A-41671-C18F197
26-48-4196	A-41671-C19F197
26-48-4206	A-41671-C20F197
26-48-4216	A-41671-C21F197
26-48-4226	A-41671-C22F197
26-48-4236	A-41671-C23F197
26-48-4246	A-41671-C24F197

Material No	Engineer Number
26-48-2027	A-41671-C02B241
26-48-2037	A-41671-C03B241
26-48-2047	A-41671-C04B241
26-48-2057	A-41671-C05B241
26-48-2067	A-41671-C06B241
26-48-2077	A-41671-C07B241
26-48-2087	A-41671-C08B241
26-48-2097	A-41671-C09B241
26-48-2107	A-41671-C10B241
26-48-2117	A-41671-C11B241
26-48-2127	A-41671-C12B241
26-48-2137	A-41671-C13B241
26-48-2147	A-41671-C14B241
26-48-2157	A-41671-C15B241
26-48-2167	A-41671-C16B241
26-48-2177	A-41671-C17B241
26-48-2187	A-41671-C18B241
26-48-2197	A-41671-C19B241
26-48-2207	A-41671-C20B241
26-48-2217	A-41671-C21B241
26-48-2227	A-41671-C22B241
26-48-2237	A-41671-C23B241
26-48-2247	A-41671-C24B241

Material No	Engineer Number
41671-0250	A-41671-C02F241
41671-0350	A-41671-C03F241
41671-0450	A-41671-C04F241
41671-0550	A-41671-C05F241
41671-0650	A-41671-C06F241
41671-0750	A-41671-C07F241
41671-0850	A-41671-C08F241
41671-0950	A-41671-C09F241
41671-1050	A-41671-C10F241
41671-1150	A-41671-C11F241
41671-1250	A-41671-C12F241
41671-1350	A-41671-C13F241
41671-1450	A-41671-C14F241
41671-1550	A-41671-C15F241
41671-1650	A-41671-C16F241
41671-1750	A-41671-C17F241
41671-1850	A-41671-C18F241
41671-1950	A-41671-C19F241
41671-2050	A-41671-C20F241
41671-2150	A-41671-C21F241
41671-2250	A-41671-C22F241
41671-2350	A-41671-C23F241
41671-2450	A-41671-C24F241

Material No	Engineer Number
	A-41671-C02N197
	A-41671-C03N197
	A-41671-C04N197
	A-41671-C05N197
	A-41671-C06N197
	A-41671-C07N197
	A-41671-C08N197
	A-41671-C09N197
	A-41671-C10N197
	A-41671-C11N197
	A-41671-C12N197
	A-41671-C13N197
	A-41671-C14N197
	A-41671-C15N197
	A-41671-C16N197
	A-41671-C17N197
	A-41671-C18N197
	A-41671-C19N197
	A-41671-C20N197
	A-41671-C21N197
	A-41671-C22N197
	A-41671-C23N197
26-48-8247	A-41671-C24N197

<u>REV:</u> AK1	<u>ECR/ECN INFORMATION:</u> EC. NO. UCP2012-1605 DATE: 12/6/2011	<u>TITLE:</u> KK .156 HEADER ASSEMBLY FRICTION LOCK STRAIGHT 2-24 CKTS.	<u>SHEET No.</u> - 4 -
<u>DOCUMENT NUMBER:</u> SD - 41671 - 001		<u>CREATED / REVISED BY:</u> NNGUYEN	<u>CHECKED BY:</u> MKIPPER
		<u>APPROVED BY:</u> FSMITH	

Group No:	A-41671-CNP228
Pin No:	43294-0282
Plating:	228 30 GOLD
Pin Length L	.800 / 20.32
Mating M	.523 / 13.28
Gold Loc G	.350 / 8.89
PC Tail P	.149 / 3.78
Tin Loc T	.200 / 5.08
Voided Ckts	NONE
Pack Per	PK-41671-001

Group No:	A-41671-CNR208
Pin No:	43294-0344
Plating:	208 15 GOLD
Pin Length L	.870 / 22.10
Mating M	.450 / 11.43
Gold Loc G	.400 / 10.16
PC Tail P	.292 / 7.42
Tin Loc T	.200 / 5.08
Voided Ckts	NONE
Pack Per	PK-41671-001

Group No:	A-41671-CNT197
Pin No:	43294-0572
Plating:	197 TIN
Pin Length L	1.100 / 27.94
Mating M	.486 / 12.34
Gold Loc G	NA
PC Tail P	.486 / 12.34
Tin Loc T	OVERALL
Voided Ckts	NONE
Pack Per	PK-41671-001

Group No:	A-41671-CNA197
Pin No:	43294-0240
Plating:	197 TIN
Pin Length L	.750 / 19.05
Mating M	.450 / 11.43
Gold Loc G	NA
PC Tail P	.172 / 4.37
Tin Loc T	OVERALL
Voided Ckts	NONE
Pack Per	PK-41671-001

Ckts
2
3
4
5
6
7
8
9
10
11
12
13
14
15
16
17
18
19
20
21
22
23
24

Material No	Engineer Number
41671-2451	A-41671-C02P228
41671-2452	A-41671-C03P228
41671-2453	A-41671-C04P228
41671-2454	A-41671-C05P228
41671-2455	A-41671-C06P228
41671-2456	A-41671-C07P228
41671-2457	A-41671-C08P228
41671-2458	A-41671-C09P228
41671-2459	A-41671-C10P228
41671-2460	A-41671-C11P228
41671-2461	A-41671-C12P228
41671-2462	A-41671-C13P228
41671-2463	A-41671-C14P228
41671-2464	A-41671-C15P228
41671-2465	A-41671-C16P228
41671-2466	A-41671-C17P228
41671-2467	A-41671-C18P228
41671-2468	A-41671-C19P228
41671-2469	A-41671-C20P228
41671-2470	A-41671-C21P228
41671-2471	A-41671-C22P228
41671-2472	A-41671-C23P228
41671-2473	A-41671-C24P228

Material No	Engineer Number
41671-2474	A-41671-C02R208
41671-2475	A-41671-C03R208
41671-2476	A-41671-C04R208
41671-2477	A-41671-C05R208
41671-2478	A-41671-C06R208
41671-2479	A-41671-C07R208
41671-2480	A-41671-C08R208
41671-2481	A-41671-C09R208
41671-2482	A-41671-C10R208
41671-2483	A-41671-C11R208
41671-2484	A-41671-C12R208
41671-2485	A-41671-C13R208
41671-2486	A-41671-C14R208
41671-2487	A-41671-C15R208
41671-2488	A-41671-C16R208
41671-2489	A-41671-C17R208
41671-2490	A-41671-C18R208
41671-2491	A-41671-C19R208
41671-2492	A-41671-C20R208
41671-2493	A-41671-C21R208
41671-2494	A-41671-C22R208
41671-2495	A-41671-C23R208
41671-2496	A-41671-C24R208

Material No	Engineer Number
41671-3400	A-41671-C02T197
41671-3401	A-41671-C03T197
41671-3402	A-41671-C04T197
41671-3403	A-41671-C05T197
41671-3404	A-41671-C06T197
41671-3405	A-41671-C07T197
41671-3406	A-41671-C08T197
41671-3407	A-41671-C09T197
41671-3408	A-41671-C10T197
41671-3409	A-41671-C11T197
41671-3410	A-41671-C12T197
41671-3411	A-41671-C13T197
41671-3412	A-41671-C14T197
41671-3413	A-41671-C15T197
41671-3414	A-41671-C16T197
41671-3415	A-41671-C17T197
41671-3416	A-41671-C18T197
41671-3417	A-41671-C19T197
41671-3418	A-41671-C20T197
41671-3419	A-41671-C21T197
41671-3420	A-41671-C22T197
41671-3421	A-41671-C23T197
41671-3422	A-41671-C24T197

Material No	Engineer Number
41671-3423	A-41671-C02A197
41671-3424	A-41671-C03A197
41671-3425	A-41671-C04A197
41671-3426	A-41671-C05A197
41671-3427	A-41671-C06A197
41671-3428	A-41671-C07A197
41671-3429	A-41671-C08A197
41671-3430	A-41671-C09A197
41671-3431	A-41671-C10A197
41671-3432	A-41671-C11A197
41671-3433	A-41671-C12A197
41671-3434	A-41671-C13A197
41671-3435	A-41671-C14A197
41671-3436	A-41671-C15A197
41671-3437	A-41671-C16A197
41671-3438	A-41671-C17A197
41671-3439	A-41671-C18A197
41671-3440	A-41671-C19A197
41671-3441	A-41671-C20A197
41671-3442	A-41671-C21A197
41671-3443	A-41671-C22A197
41671-3444	A-41671-C23A197
41671-3445	A-41671-C24A197

<u>REV:</u> AK1	<u>ECR/ECN INFORMATION:</u> EC. NO. UCP2012-1605 DATE: 12/6/2011	<u>TITLE:</u> KK .156 HEADER ASSEMBLY FRICTION LOCK STRAIGHT 2-24 CKTS.	<u>SHEET No.</u> - 5 -
<u>DOCUMENT NUMBER:</u> SD - 41671 - 001		<u>CREATED / REVISED BY:</u> NNGUYEN	<u>CHECKED BY:</u> MKIPPER
		<u>APPROVED BY:</u> FSMITH	

