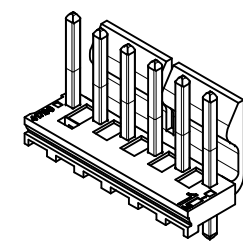
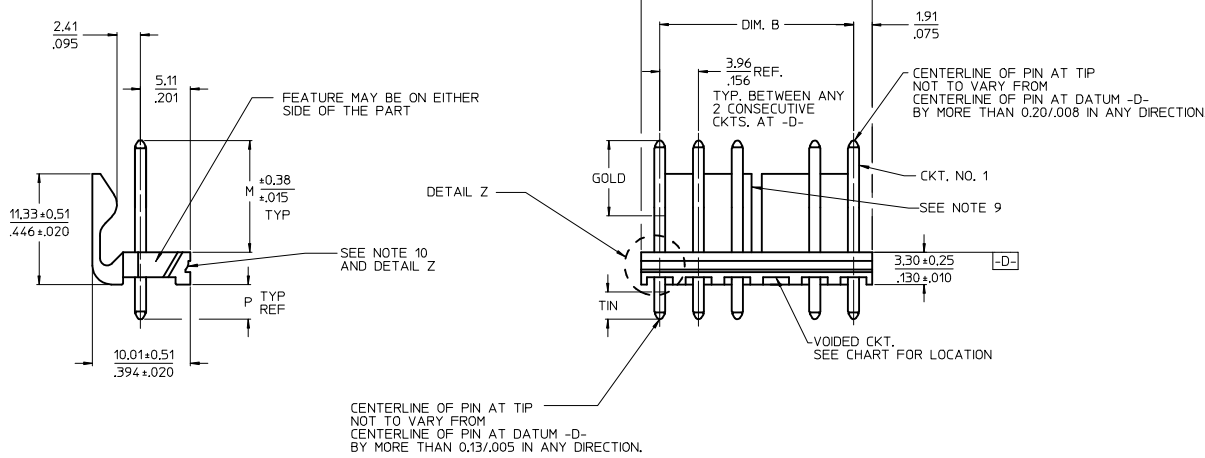
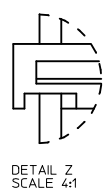


10 9 8 7 6 5 4 3 2 1

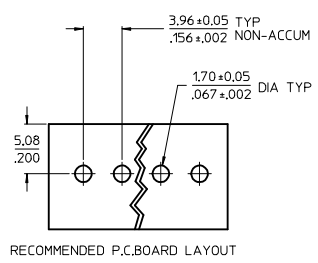


CKT	DIM. A	DIM. B	SLOT LOC BETWEEN CKTS
2	7.77 .306	3.96±0.05 .156±0.02	NONE
3	11.73 .462	7.92±0.08 .312±0.03	NONE
4	15.70 .618	11.89±0.08 .468±0.03	NONE
5	19.66 .774	15.85±0.10 .624±0.04	NONE
6	23.62 .930	19.81±0.10 .780±0.04	3 & 4
7	27.58 1.086	23.77±0.10 .936±0.04	4 & 5
8	31.55 1.242	27.74±0.13 1.092±0.05	4 & 5
9	35.51 1.398	31.70±0.13 1.248±0.05	5 & 6
10	39.47 1.554	35.66±0.13 1.404±0.05	5 & 6
11	43.43 1.710	39.62±0.15 1.560±0.06	6 & 7
12	47.40 1.866	43.59±0.15 1.716±0.06	4 & 5 8 & 9
13	51.36 2.022	47.55±0.15 1.872±0.06	4 & 5 9 & 10
14	55.32 2.178	51.51±0.18 2.028±0.07	5 & 6 9 & 10
15	59.28 2.334	55.47±0.18 2.184±0.07	5 & 6 10 & 11
16	63.25 2.490	59.44±0.18 2.340±0.07	5 & 6 11 & 12
17	67.21 2.646	63.40±0.20 2.496±0.08	6 & 7 11 & 12
18	71.17 2.802	67.36±0.20 2.652±0.08	6 & 7 12 & 13



DETAIL Z
SCALE 4:1

- NOTES:
 1. MATERIAL: HEADER-GLASS FILLED POLYESTER, 94V-0, MOLDED NATURAL (WHITE).
 2. FINISH:
 (154-TIN) OVERALL TIN: 0.00254/.000100 MIN.
 OVER 0.00127/.000050 MIN NICKEL.
 (197-TIN) OVERALL REFLOWED MATTE TIN: 0.00152/.000060 MIN.
 OVER 0.00127/.000050 MIN. NICKEL OVERALL.
 (222-TIN) OVERALL MATTE TIN: 0.00254/.000100 MIN.
 OVER 0.00127/.000050 MIN NICKEL.
 (208-15 GOLD) SELECT GOLD: 0.00038/.000015 MIN. SELECT TIN: 0.00254/.000100 MIN.
 OVERALL NICKEL UNDERPLATE: 0.00127/.000050 MIN.
 (228-30 GOLD) SELECT GOLD: 0.00076/.000030 MIN. SELECT TIN: 0.00254/.000100 MIN.
 OVERALL NICKEL UNDERPLATE: 0.00127/.000050 MIN.
 (241-20 GOLD) 0.00051/.000020 MIN.
 SELECT TIN: 0.00254/.000100 MIN.
 OVERALL NICKEL UNDERPLATE: 0.00127/.000050 MIN.
 3. PRODUCT SPECIFICATION AND PROCESS PARAMETERS: SEE PS-08-50.
 4. PACKAGING INFORMATION: SEE CHARTS.
 5. SOLDERABILITY: PER SMES-152.
 6. PIN PUSH-OUT FORCE: PRIOR TO SOLDERING, A 3 LB. MINIMUM FORCE (IN EITHER DIRECTION)
 7. PARTS ARE STACKABLE END TO END ON 3.96/.156 CENTERS.
 8. THIS PART CONFORMS TO CLASS B REQUIREMENTS OF COSMETIC SPECIFICATION PS-45499-002.
 9. SLOTS ON BACKWALL ARE BETWEEN CIRCUITS. SEE CHART FOR LOCATION.
 10 FEATURE MAY OR MAY NOT EXTEND ACROSS THE ENTIRE FACE OF THE PART "SEE DETAIL Z".



RECOMMENDED P.C.BOARD LAYOUT

ADD 41791-1312 EC NO: UCP2014-3535 DRW:MKIPPER 2014/02/25 CHKD:NGUYEN 2014/04/07 APPR:FSMITH 2014/07/28	QUALITY SYMBOLS F/0 F/0 F/0	GENERAL TOLERANCES (UNLESS SPECIFIED) mm INCH		DIMENSION STYLE MM/IN		SCALE 2:1	DESIGN UNITS INCH	THIRD ANGLE PROJECTION	
		4 PLACES ± --- ± --- 3 PLACES ± --- ± .010 2 PLACES ± 0.25 ± .015 1 PLACE ± 0.38 ± --- 0 PLACE ± ±	DRAWN BY JSCHAFFER	DATE 11-07-03	TITLE KK 156 HEADER ASSEMBLY FRICTION LOCK VERTICAL SOLID BODY W/O PEGS		DOCUMENT NO. SDA-41791		SHEET NO. 1 OF *
DRAFT WHERE APPLICABLE MUST REMAIN WITHIN DIMENSIONS		MATERIAL NO. SEE CHART		THIS DRAWING CONTAINS INFORMATION THAT IS PROPRIETARY TO MOLEX INCORPORATED AND SHOULD NOT BE USED WITHOUT WRITTEN PERMISSION					