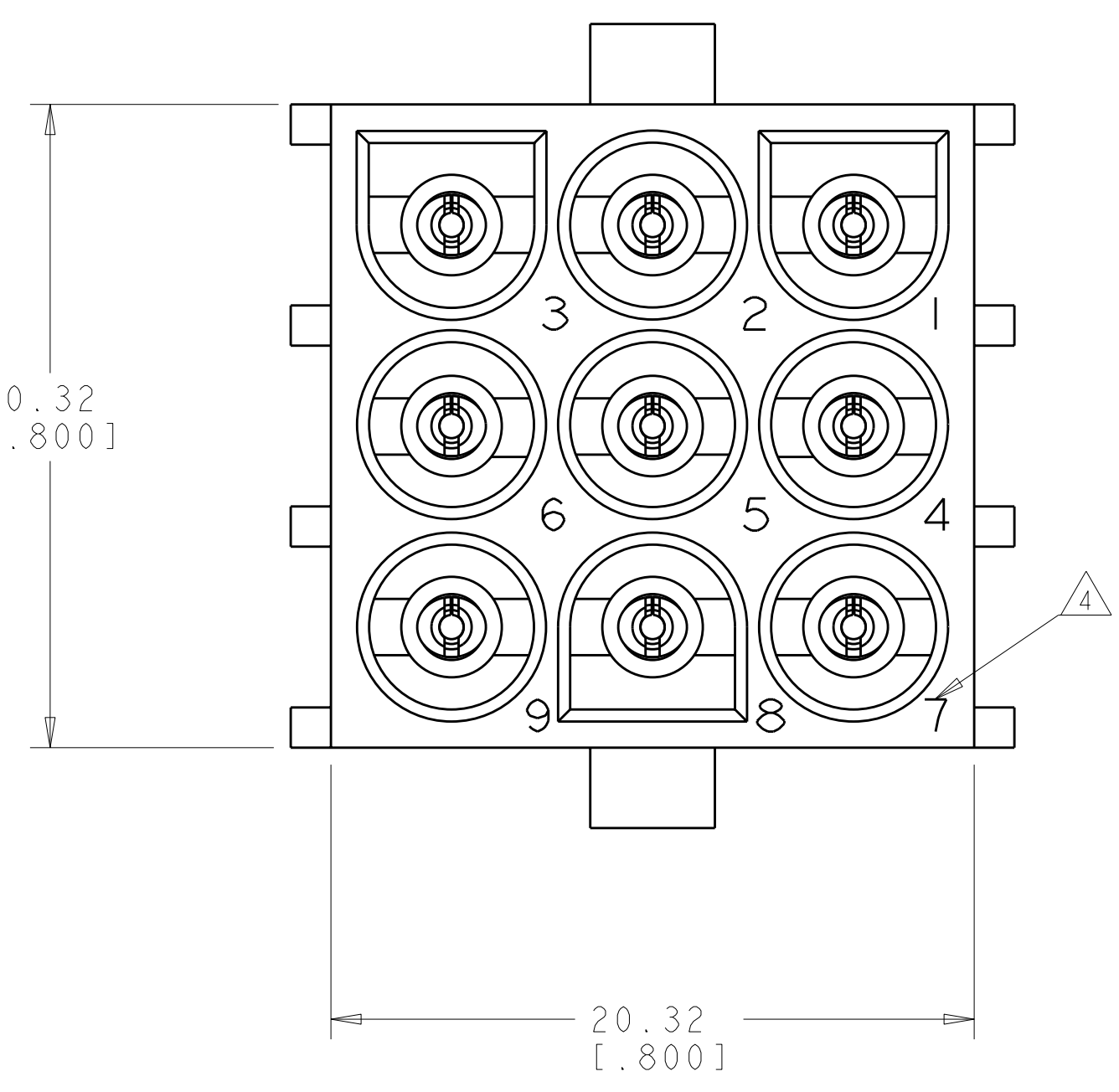
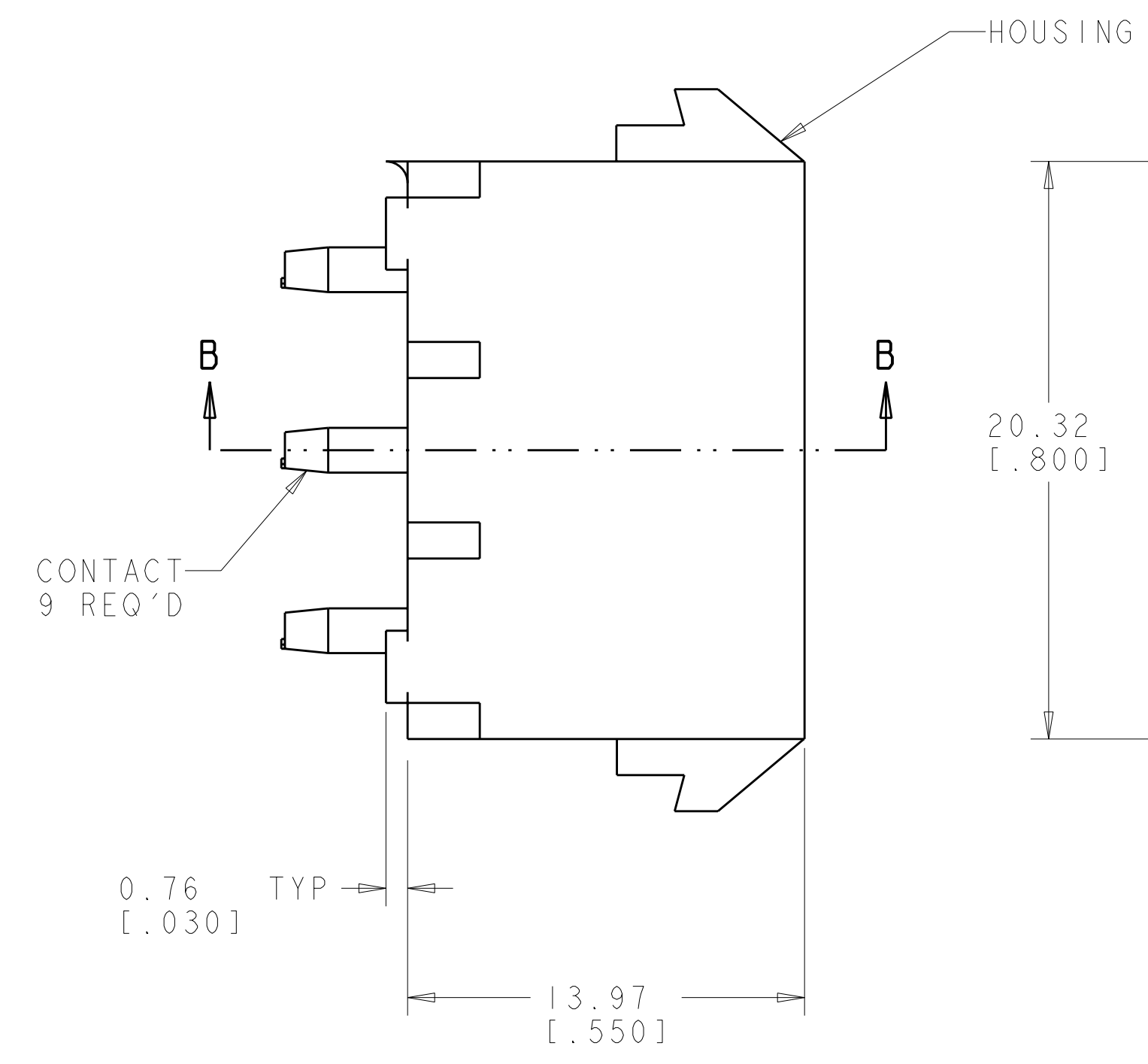
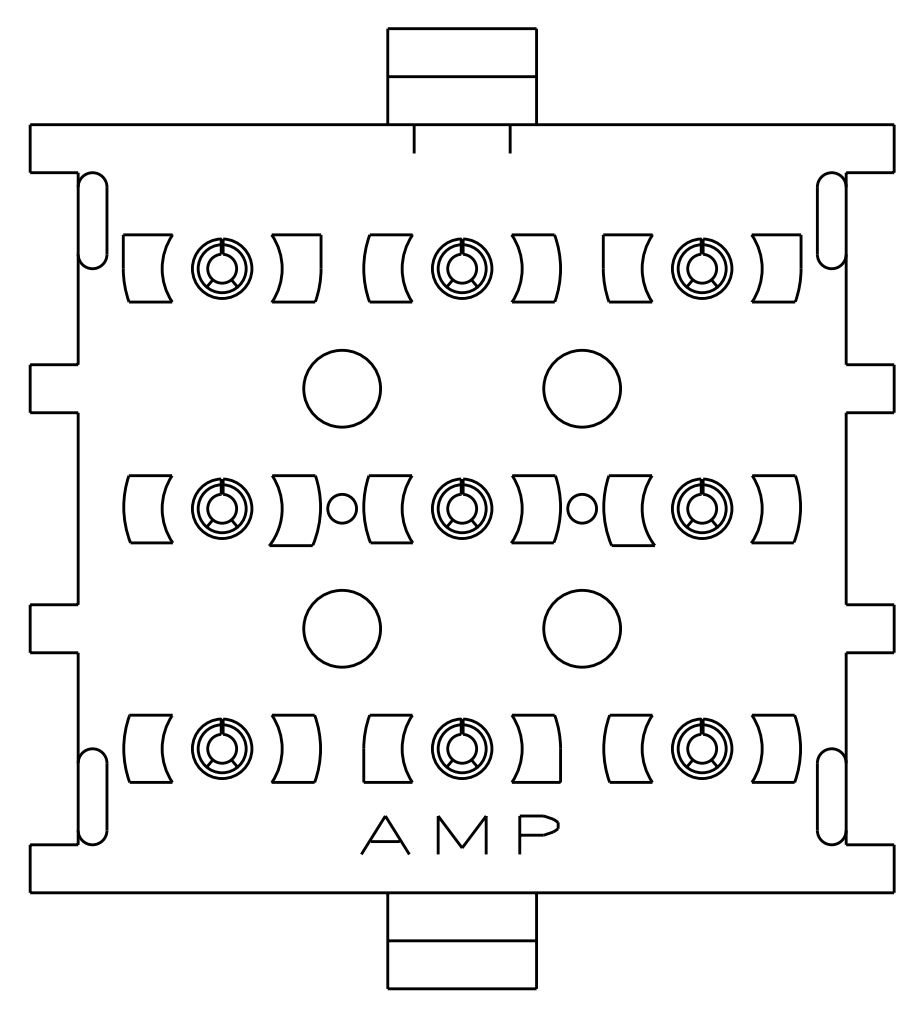
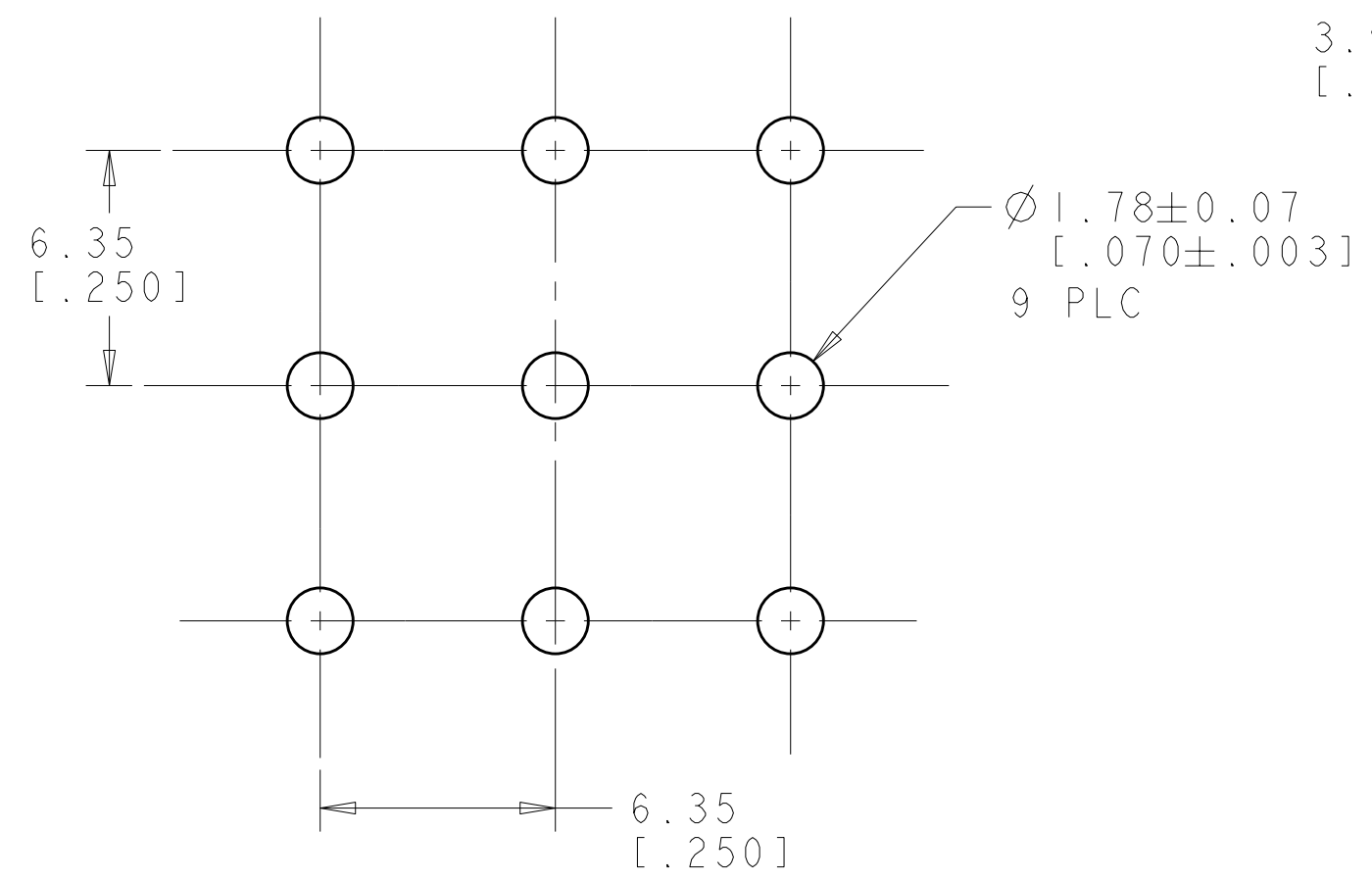
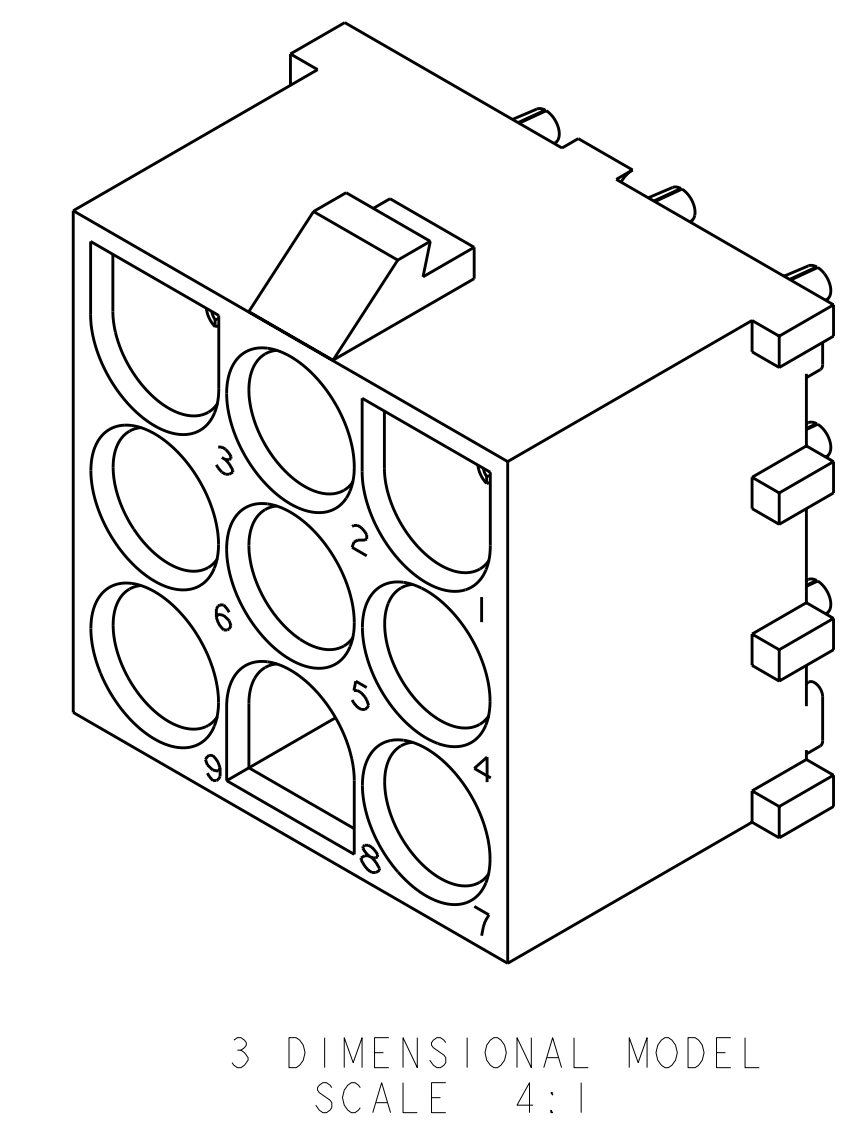
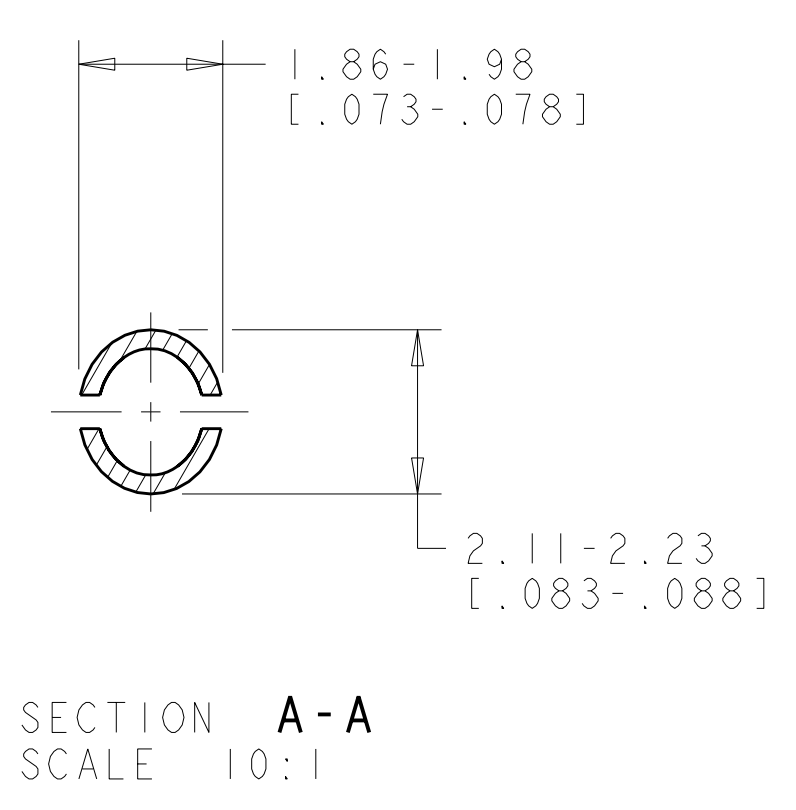
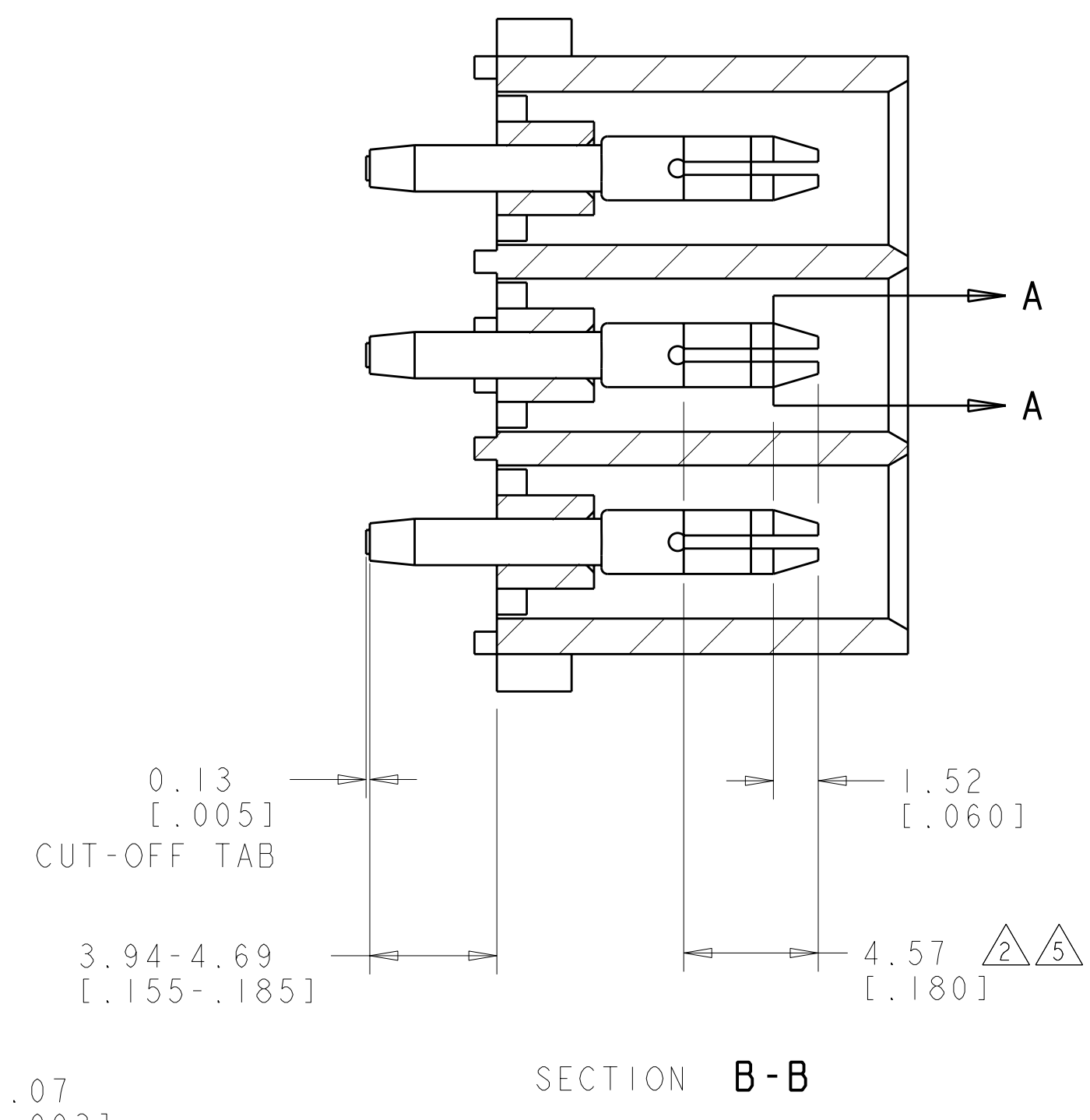


LOC	DIST	REV	DATE	BY	CHK	APPV
CM	00	W1	16MAR2011	RK	HMR	



- PARTS COMPLY TO AMP SOLDERABILITY SPECIFICATION 109-11-3.
- CONTACT IS PLATED OVERALL WITH 0.00127 [0.00050] NICKEL, THEN 0.00076 [0.00030] GOLD OVER CONTACT LENGTH INDICATED AND TIN LEAD ON SOLDER TAIL END.
- MATES WITH HOUSING 480706.
- CIRCUIT IDENTIFICATION CHARACTERS ARE ADJACENT TO THE INDICATED CAVITIES, BUT LOCATION AND ORIENTATION MAY DIFFER FROM PRINT.
- CONTACT IS PLATED OVERALL WITH 0.00127 [0.00050] NICKEL, THEN 0.00076 [0.00030] GOLD OVER CONTACT LENGTH INDICATED AND MATTE TIN ON SOLDER TAIL END.
- DIMENSIONS IN BRACKETS ARE IN INCHES.



RECOMMENDED MOUNTING HOLE PATTERN FOR 1.57 [0.062] THICK P.C. BOARD

PIN CONTACT MATERIAL AND FINISH	HOUSING MATERIAL AND COLOR	PART NUMBER
PHOSPOR BRONZE, GOLD $\Delta 5$	NYLON, UL94V-2, NATURAL	350432-4
PHOSPOR BRONZE, GOLD $\Delta 2$	NYLON, UL94V-2, NATURAL	350432-2
PHOSPOR BRONZE, PRE-TIN	NYLON, UL94V-2, NATURAL	350432-1



THIS DRAWING IS A CONTROLLED DOCUMENT.		DWN: R. WHITAKER 19JULY2005 CHK: S. RIDGILL 19JULY2005 APPV: S. RIDGILL 19JULY2005	STE TE Connectivity NAME: PIN HEADER ASSEMBLY, 9 CIRCUIT, UNIVERSAL MATE-N-LOK™ SIZE: CAGE CODE DRAWING NO. RESTRICTED TO: A100779C=350432
DIMENSIONS: mm [INCHES]	TOLERANCES UNLESS OTHERWISE SPECIFIED:	PRODUCT SPEC	SCALE: 5:1 SHEET 1 OF 1 REV: W1
9 PLC ± 3 PLC ±0.13 [0.005] 5 PLC ± 4 PLC ± ANGLES 40° 30'	FINISH SEE TABLE	APPLICATION SPEC	CUSTOMER DRAWING