

PRODUCT NUMBER  
 5 4 2 0 2 - X X X X - X X X LF

PLATING

S=15µ" [0.38µm] GOLD  
 ON CONTACT AREA  
 100µ" [2.5µm] TIN  
 ON TAIL

G=30µ" [0.76µm] GOLD  
 ON CONTACT AREA  
 100µ" [2.5µm] TIN  
 ON TAIL

T=100µ" [2.5µm] TIN  
 ON CONTACT AREA  
 AND ON TAIL (SEE NOTE 11, 15)

F=2µ" [0.05µm] GOLD  
 ON CONTACT AREA  
 AND ON TAIL

LEAD FREE OPTION NOTE 9 & 10

POLARIZATION  
 NOTE 6

PACKAGING TYPE, NOTE 5

POSITIONS PER ROW  
 02 TO 20

LEAD STYLE	POST
08	0.230/5.84
30	0.318/8.08

NOTES:

① HOUSING MAT'L: HIGH TEMPERATURE THERMOPLASTIC.  
 FLAME RETARDANT PER UL 94V-0  
 COLOR: BLACK  
 OR  
 MINERAL FILLED LCP FLAME RETARDENT  
 PER UL-94V-0. COLOR: BLACK.  
 THESE PART NUMBERS WILL WITHSTAND EXPOSURE  
 TO 260 C PEAK TEMPERATURE FOR 20 SECONDS IN  
 WAVE SOLDER, INFRA-RED OR VAPOR PHASE SOLDER PROCESS.

- ② PIN MATERIAL: PHOSPHOR-BRONZE
- ③ TO DETERMINE DIMENSIONS:  
 N = NUMBER OF POSITIONS ROW.  
 EXAMPLE: 10 POS., N x .100/2.54=1.00/25.4
- ④ 2LBS/0.9KG MIN. PIN RETENTION IN EITHER DIRECTION.
- ⑤ PACKAGING: \_ =POLY BAGS WITHOUT PICKUP CAP.  
 T =TUBES (OMIT DASH IF NOT POLARIZED).  
 P =TUBES WITH PICKUP CAPS.  
 A =TAPE AND REEL WITH PICKUP CAPS.

⑥ FOR POLARIZATION, SPECIFY POSITION NUMBER  
 (i.e. A03=ROW A POS. 3) TO OMIT PIN.  
 OMIT FROM PRODUCT NUMBER IF THIS FEATURE IS NOT APPLICABLE.  
 PRODUCT MANAGEMENT APPROVAL REQUIRED PRIOR TO RELEASE  
 OR SALE OF POLARIZED PRODUCTS.

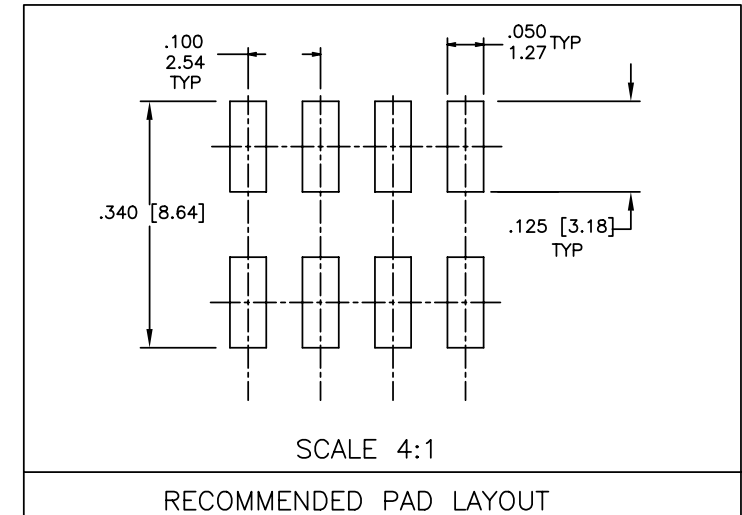
7. UNDERPLATING: 50µ"/1.2µm Ni.  
 8. PIN TIPS ON Sn PLATED PRODUCT MAY HAVE BARE METAL ON TWO SIDES,  
 BOTH ENDS.

⑨ PART NUMBERS WITH "LF" SUFFIX AT THE END ARE LEAD FREE.

⑩ THESE PRODUCTS MEETS EUROPEAN UNION DIRECTIVES AND OTHER  
 COUNTRY REGULATION AS DESCRIBED IN GS-22-008.

⑪ "THIS PRODUCT HAS 100% PURE TIN PLATING IN THE INTERFACE AND  
 HAS NOT BEEN TESTED FOR WHISKER GROWTH IN ALL INTERCONNECT  
 ENVIRONMENTS."

12. THE HOUSING WILL WITHSTAND EXPOSURE TO 260°C PEAK TEMPERATURE  
 FOR 20 SECONDS IN A CONVECTION, INFRA-RED OR VAPOR PHASE REFLOW  
 OVEN. SEE APPLICATION NOTES/PROCEDURES IF THEY ARE AVAILABLE.

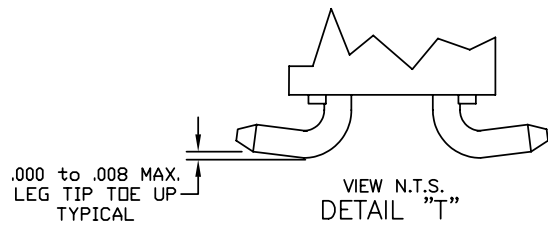
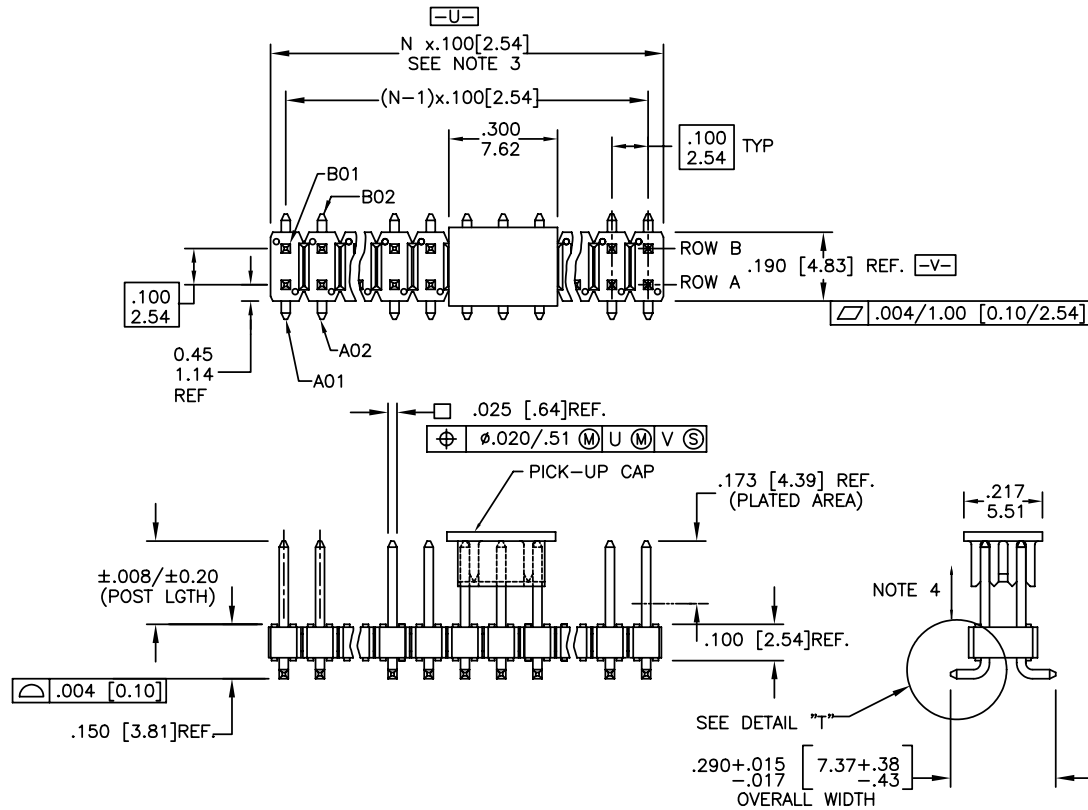


Copyright FCI.

www.fciconnect.com			surface 6.4 ISO 1302	tolerance std ISO 406 ISO 1101	projection ⊕	INCH/MM
			TOLERANCES UNLESS OTHERWISE SPECIFIED		size A4	Scale 1.000
Dr	D.INGRAM	05/17/99	ANGULAR	0.X ±0.3		
Eng	H.SUNDY	07/21/99	LINEAR	0.XX ±0.15		
Chr	H.SUNDY	07/21/99	0° ±2°	0.XXX ±0.05	ECN	N10-0438
Appr	H.SUNDY	07/21/99	Product family BERGSTIK		Spec ref	
FCI			title .100 UNSHROUDED HDR. DUAL ROW VERT. SMT.		dwg no 54202	Rev. V
			catalog no		CUSTOMER	sheet 1 of 3

rev	ecn no	dr	date
N	M06-0268	MHT	7/17/06
P	M06-0435	MHT	10/31/06
R	M07-0092	MHT	2/07/07
S	M07-0361	MHT	8/14/07
T	M08-0208	MHT	7/18/08
U	M08-0279	MHT	9/30/08
V	N10-0438	ZJ	2010-12-28

PRODUCT NUMBER  
SEE TABLE



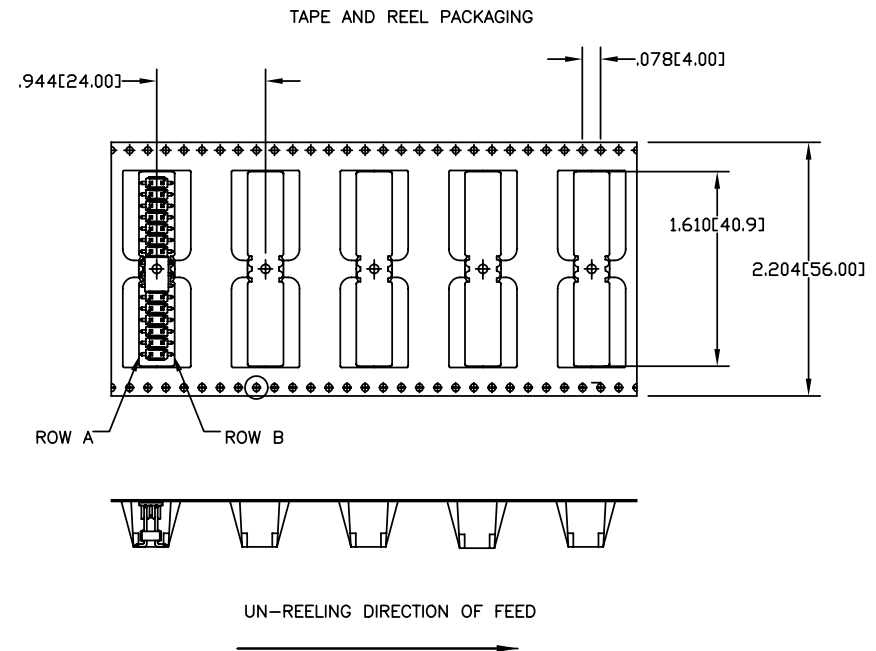
www.fciconnect.com			surface ISO 1302 ✓	tolerance std ISO 406 ISO 1101	projection INCH/MM
TOLERANCES UNLESS OTHERWISE SPECIFIED			TOLERANCES UNLESS OTHERWISE SPECIFIED		size A4
Dr	D.INGRAM	05/17/99	ANGULAR	0.X ±0.3	Scale 1.000
Eng	H.SUNDY	07/21/99	LINEAR	0.XX ±0.15	ECN N10-0438
Chr	H.SUNDY	07/21/99	0° ±2°	0.XXX ±0.05	Spec ref
Appr	H.SUNDY	07/21/99	Product family	BERGSTIK	
FCI title .100 UNSHROUDED HDR. DUAL ROW VERT. SMT.			dwg no 54202		Rev. V
catalog no			CUSTOMER		sheet 2 of 3



Copyright FCI.

### TAPE AND REEL PACKAGING

SIZE	LEAD STYLE 08 POST (0.230 [5.84])	LEAD STYLE 30 POST (0.318 [8.08])
2X2	YES	
2X3	YES	
2X4	YES	YES
2X5	YES	
2X6	YES	
2X7	YES	YES
2X8	YES	
2X9		
2X10	YES	
2X11	YES	
2X12		YES
2X13	YES	
2X14		
2X15	YES	
2X16		YES
2X17	YES	
2X18		
2X19		
2X20		



Copyright FCI.

#### Cross Reference

CORE RANGE	EXTENDED RANGE
54202-X08XXLF	95278-X01-XXLF
54202-X30XXLF	95278-X02-XXLF

www.fciconnect.com		surface ISO 1302 ✓	tolerance std ISO 406 ISO 1101	projection	INCH/MM
		TOLERANCES UNLESS OTHERWISE SPECIFIED		← →	
Dr	D.INGRAM	05/17/99	ANGULAR	0.X ±0.3	size A4
Eng	H.SUNDY	07/21/99	LINEAR	0.XX ±0.15	Scale 1.000
Chr	H.SUNDY	07/21/99	0° ±2°	0.XXX ±0.05	ECN N10-0438
Appr	H.SUNDY	07/21/99	Product family	BERGSTIK	Spec ref
		title .100 UNSHROUDED HDR. DUAL ROW VERT. SMT.		dwg no 54202	Rev. V
catalog no		CUSTOMER		sheet 3 of 3	