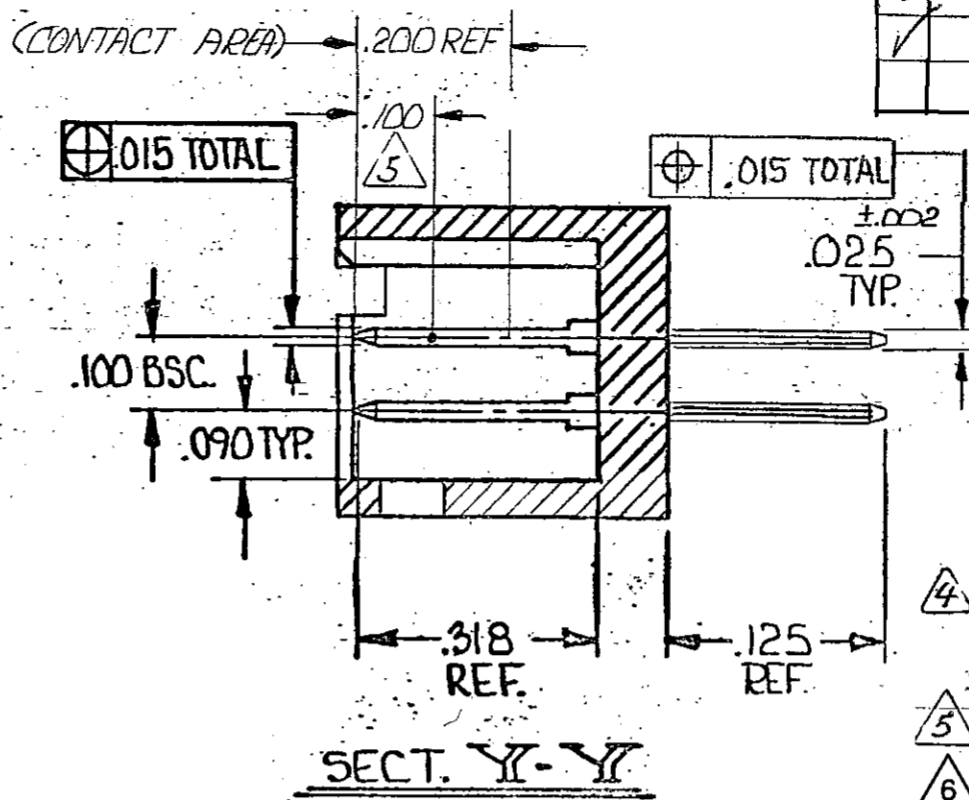
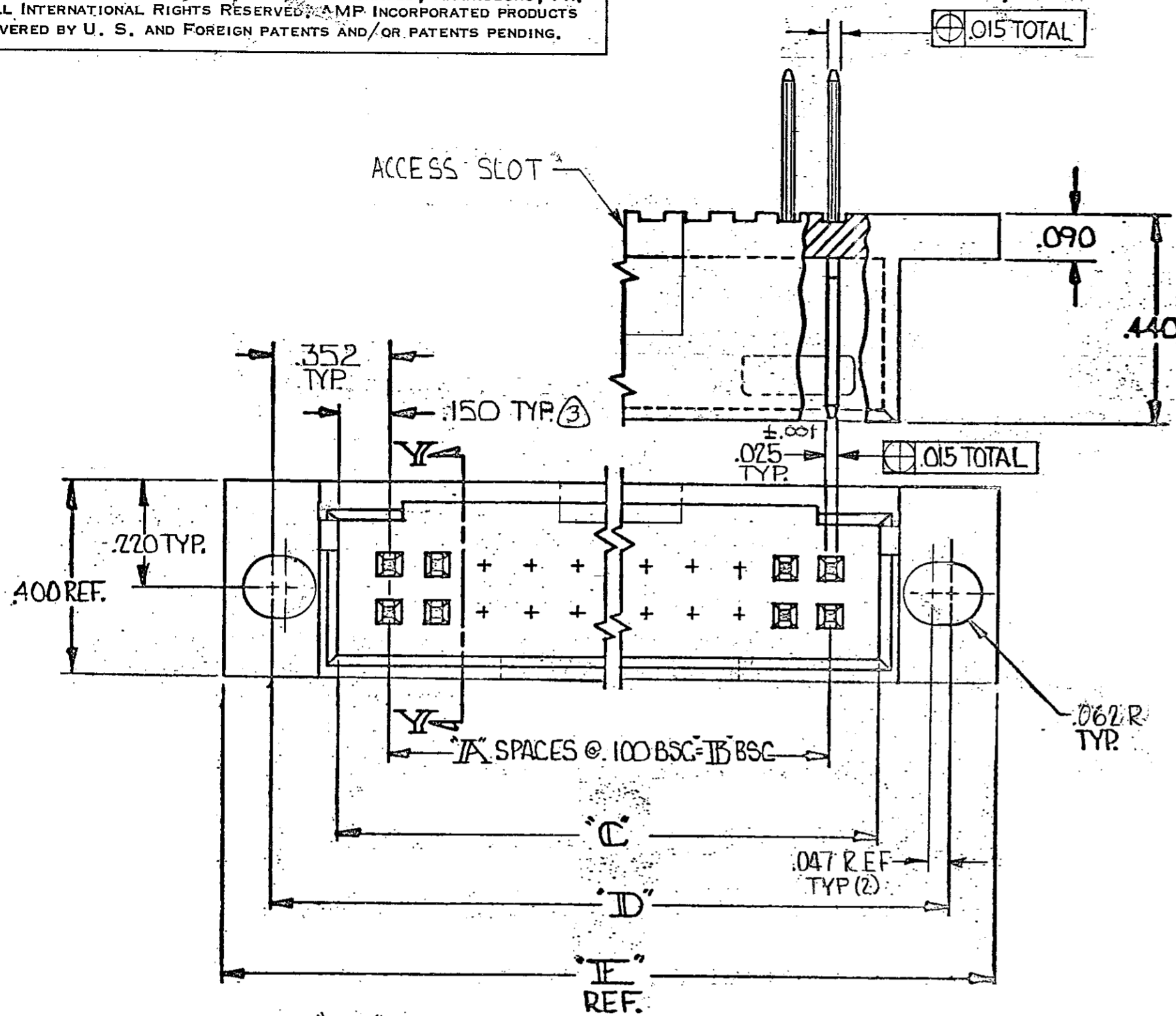


© COPYRIGHT 1975-83 BY AMP INCORPORATED, HARRISBURG, PA. ALL INTERNATIONAL RIGHTS RESERVED. AMP INCORPORATED PRODUCTS COVERED BY U. S. AND FOREIGN PATENTS AND/OR PATENTS PENDING.

REVISIONS							DATE	APPROVED
P	F	ZONE	LTR	DESCRIPTION				
✓			G	REV PER AD-5084			2-1-91	RF
✓			H	REV PER AD-5161			2-1-91	RF
✓			J	REV PER 0010-0931-93	RAC		9-93	JL
✓			K	REV PER 0310-0146-96	ED		2-27-97	SAS
✓			L	REV PER 0310-0437-97	CB		12-3-97	SAS
			L1	REVISED PER ECO-10-000445			JAN10	HMR



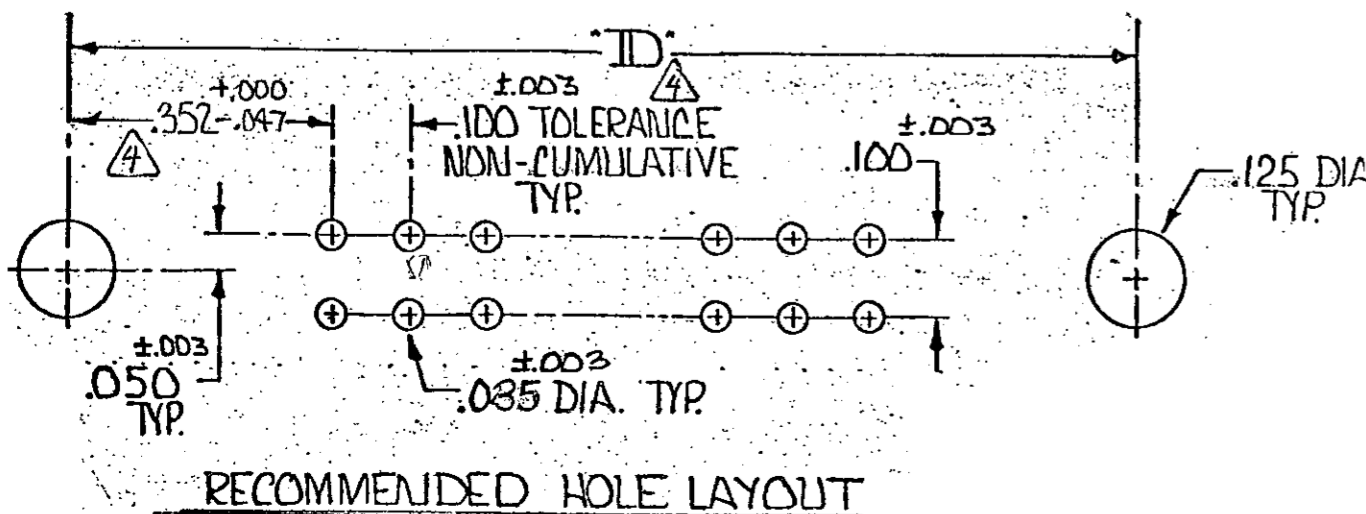
△ .000030 GOLD ON CONTACT AREA, GOLD FLASH ON SOLDER AREA ALL OVER .000050 MIN. NICKEL ON ENTIRE POST.

③ WILL ALSO MATE WITH OTHER CONNECTORS WHICH ARE COMPATIBLE WITH THE .150 END DIM AND WILL MATE W/MOD IV HAVING FOUR EXTRA EMPTY CIRCUITS (TWO EA. END) --- EX: 20 POS. POST HEADER WILL MATE WITH 24 POS. MOD IV HOUSING.

④ CUSTOMER P.C. BRD. LAYOUT MAY VARY WITHIN THIS RANGE. WHEN MATING WITH MOD IV CONNECTORS UTILIZING JACKSCREW HARDWARE USE D-.091" AND .305 TYP.

△ POINT OF MEASUREMENT FOR PLATING THICKNESS.
 △ OBSOLETE PARTS: OBSOLETE CIS STREAMLINING PER D.RENAUD/D.SINISI

POST NO.	POST DIA.	POST HSG.	POST COLOR	POST FINISH	POST MOUNTING	POST DETENT	POST SLOTS	POST MATING	POST PART NO.
60	.190	3.804	3.604	3.100	2.900	29	①	60	2-87474-6
58	.190	3.704	3.504	3.100	2.800	28	①	58	2-87474-5
56	.190	3.604	3.404	3.000	2.700	27	①	56	2-87474-4
54	.190	3.504	3.304	2.900	2.600	26	①	54	2-87474-3
52	.190	3.404	3.204	2.800	2.500	25	①	52	2-87474-2
48	.190	3.204	3.004	2.600	2.300	23	①	48	2-87474-1
46	.190	3.104	2.904	2.500	2.200	22	①	46	2-87474-0
44	.190	3.004	2.804	2.400	2.100	21	①	44	2-87474-9
42	.190	2.904	2.704	2.300	2.000	20	①	42	2-87474-8
36	.190	2.604	2.404	2.000	1.700	17	①	36	2-87474-7
32	.190	2.404	2.204	1.800	1.500	15	①	32	2-87474-6
30	.190	2.304	2.104	1.700	1.400	14	①	30	2-87474-5
28	.190	2.204	2.004	1.600	1.300	13	①	28	2-87474-4
24	.190	2.004	1.804	1.400	1.100	11	①	24	2-87474-3
22	.190	1.904	1.704	1.300	1.000	10	①	22	2-87474-2
18	.190	1.704	1.504	1.100	.800	8	①	18	2-87474-1
16	.190	1.604	1.404	1.000	.700	7	①	16	2-87474-0
14	.190	1.504	1.304	.900	.600	6	①	14	2-87474-9
12	.190	1.404	1.204	.800	.500	5	①	12	2-87474-8
50	.190	3.304	3.104	2.700	2.400	24	△	50	87474-7
40	.190	2.804	2.604	2.200	1.900	19	△	40	87474-6
38	.190	2.704	2.504	2.100	1.800	18	△	38	87474-5
34	.190	2.504	2.304	1.900	1.600	16	△	34	87474-4
26	.190	2.104	1.904	1.500	1.200	12	△	26	87474-3
20	.190	1.804	1.604	1.200	.900	9	△	20	87474-2
10	.190	1.304	1.104	.700	.400	4	△	10	87474-1



UNLESS OTHERWISE SPECIFIED DIMENSIONS ARE IN INCHES. TOLERANCES ON: DECIMALS: ±.005 ANGLES: ±	CONTRACT NO		AMP INCORPORATED Harrisburg, Pa.
	DR: <i>KA Wolfe</i> 10-13-75	NAME	
	CHK: <i>DM Wolfe</i> 10-14-75	HEADER ASSY., MOD II, .075 SQ. POST, DBL. ROW, .100 x .100 CENTERS, W/MTG. EARS & DETENT SLOTS (MATES W/AMP LATCH OR FFC) (2)	
	MATERIAL HSG. = GLASS FILLED NYLON COLOR - BLACK POST = PHOS. BRONZE	SIZE CODE IDENT NO DRAWING NO	
FINISH SEE TABLE	DSGN APPD: <i>C. Lopinski</i> 10/17/75	OTHER APPD:	C 00779 87474