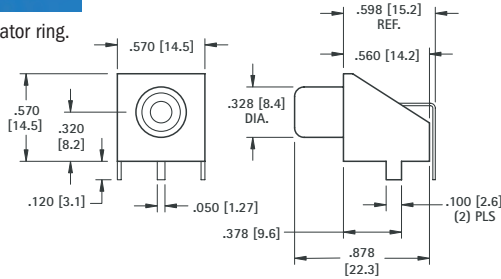


## 90° PC PHONO JACK

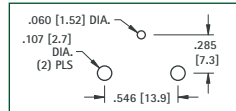


Complete one piece jack for insertion into PC board.  
Time Saving. No Wiring Required.

- Black insulator ring.



Mounting Detail



**MATERIAL:**

**Base:** Steel, Tin Plate  
**Shell:** Steel, Nickel Plate  
**Contact:** Brass, Tin Plate

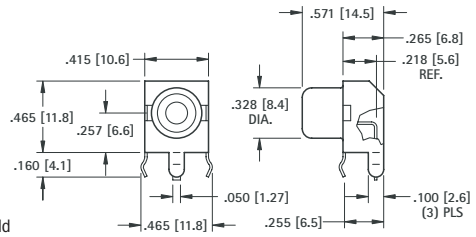
**CAT. NO. 902**

## SNAP-FIT 90° PC PHONO JACKS

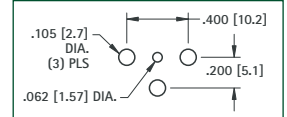
**CHOICE OF TIN OR GOLD PLATE**



Complete one piece jack for insertion into PC board.  
Time Saving. No Wiring Required.  
Snap-fits into PC board.



Mounting Detail



**MATERIAL:**

**Shell:** Steel  
**Contact:** Brass  
**Plating:** Tin or Gold

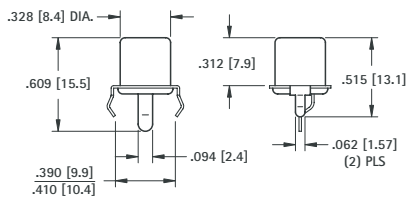
TIN PLATE CAT. NO.	INSULATOR COLOR	GOLD PLATE CAT. NO.
587	WHITE	936
588	RED	937
901	BLACK	900
589	YELLOW	938

## SNAP-FIT VERTICAL PC JACK

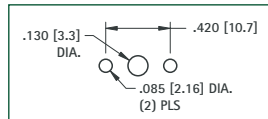
- Snaps into holes on PC board and firmly held for soldering
- No staking required



- Red insulator ring



Mounting Detail



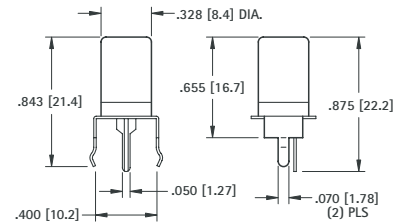
**MATERIAL:**

**Shell:** Steel, Tin Plate  
**Contact:** Brass, Tin Plate

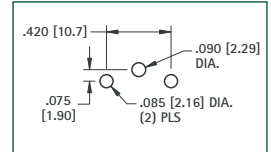
**CAT. NO. 572**

## SNAP-FIT VERTICAL PC PHONO JACKS

- Extra long, one piece shell to accept plugs with longer pins for greater contact
- Snaps into holes on PC board and firmly held for soldering
- No staking required



Mounting Detail



CAT. NO.	INSULATOR COLOR
584	WHITE
577	RED
585	BLACK
586	YELLOW

**MATERIAL:**

**Shell:** Steel, Nickel Plate  
**Contact:** Brass, Tin Plate

PC PHONO JACKS

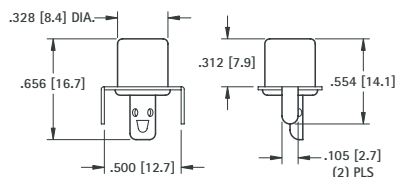
## PC PHONO JACKS

**VERTICAL**

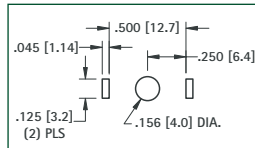
- For applications requiring staking to product



- White insulator ring



Mounting Detail



**MATERIAL:**

**Shell:** Steel, Tin Plate  
**Contact:** Brass, Tin Plate

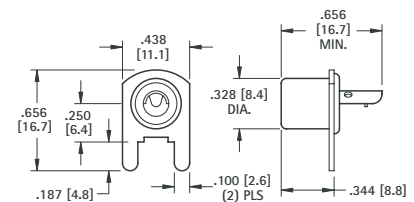
**CAT. NO. 573**

**HORIZONTAL**

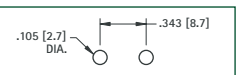
- Mounted on bracket ready for insertion into pre-drilled holes
- Solder lug allows remote attachment of signal to PC board



- Red insulator ring



Mounting Detail



**MATERIAL:**

**Shell:** Steel, Tin Plate  
**Contact:** Brass, Tin Plate

**CAT. NO. 571**