

SMA Straight Panel Jack Receptacles

Extended Contact and Insulator

- Extended contact and insulator
- 1/2" square flange

Captive contact:

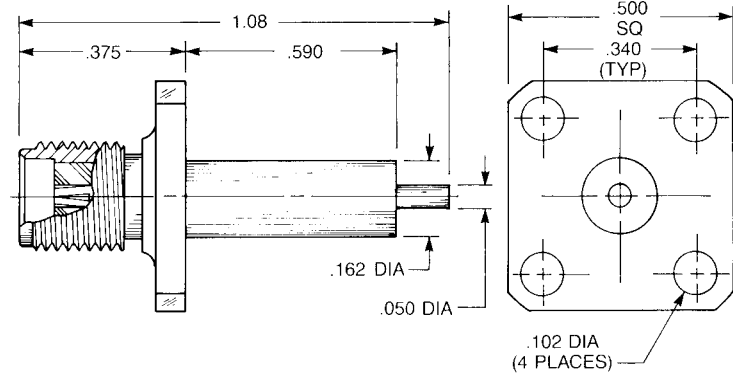
9004-1113-000 (Gold plated)

9004-9113-000 (Passivated)

Noncaptive contact:

9004-1213-000 (Gold plated)

9004-9213-000 (Passivated)



- Extended contact and insulator
- 2-hole flange

Captive contact:

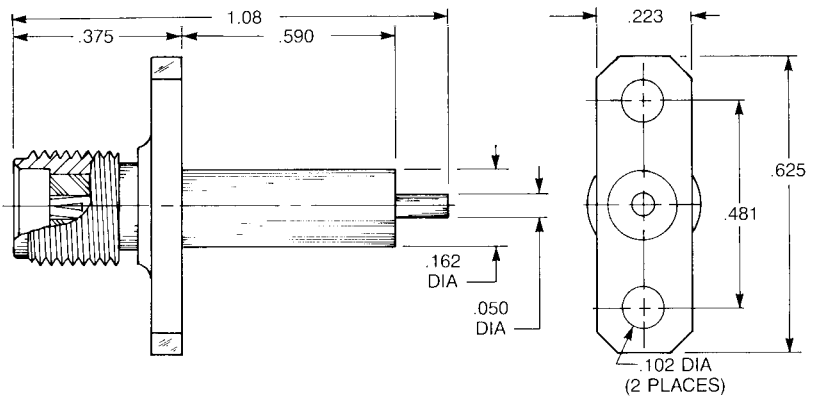
9008-1113-000 (Gold plated)

9008-9113-000 (Passivated)

Noncaptive contact:

9008-1213-000 (Gold plated)

9008-9213-000 (Passivated)



- Extended contact and insulator
- 3/8" square flange

Captive contact:

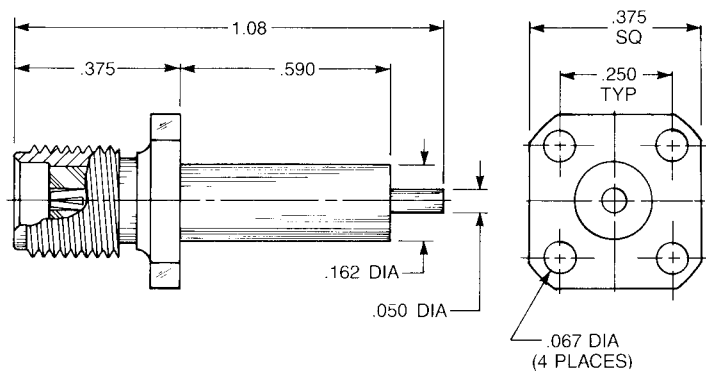
9076-1113-000 (Gold plated)

9076-9113-000 (Passivated)

Noncaptive contact:

9076-1213-000 (Gold plated)

9076-9213-000 (Passivated)



- Extended contact and insulator
- Rectangular flange

Captive contact:

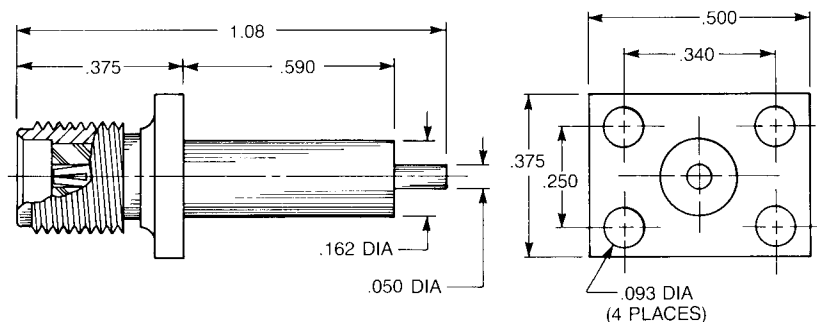
9007-1113-000 (Gold plated)

9007-9113-000 (Passivated)

Noncaptive contact:

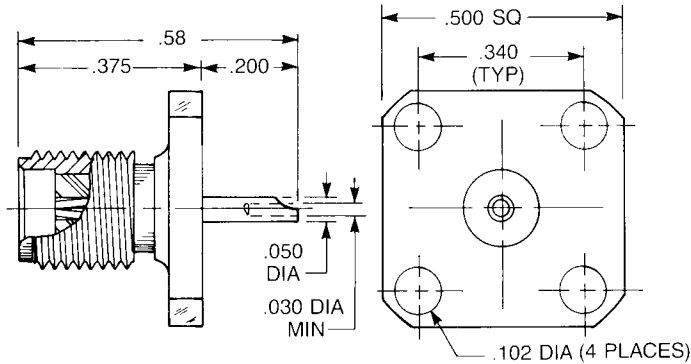
9007-1213-000 (Gold plated)

9007-9213-000 (Passivated)



SMA Straight Panel Jack Receptacles

Solder Pot Contact



Straight Panel Jack Receptacle

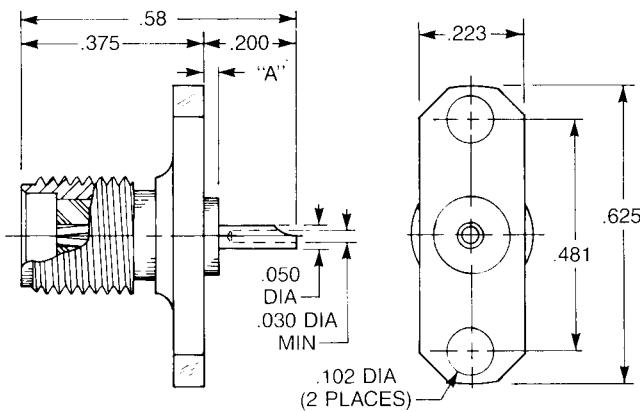
- Solder pot contact
- 1/2" square flange

Captive contact:

9404-1113-000 (Gold plated)

9404-9113-000 (Passivated)

QPL version available (M39012/60)



Straight Panel Jack Receptacle

- Solder pot contact
- 2-hole flange

Captive contact (A = .030):

9408-1113-000 (Gold plated)

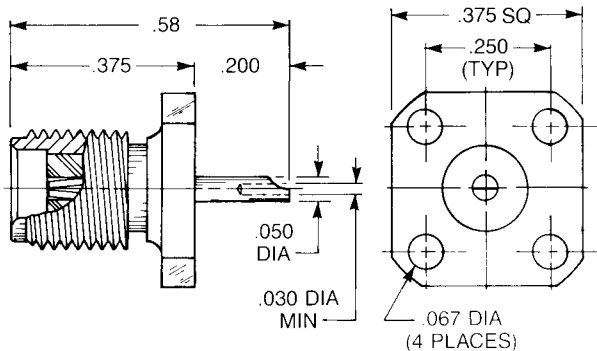
9408-9113-000 (Passivated)

Captive contact (A = .000):

9408-1113-002 (Gold plated)

9408-9113-002 (Passivated)

QPL version available (M39012/60)



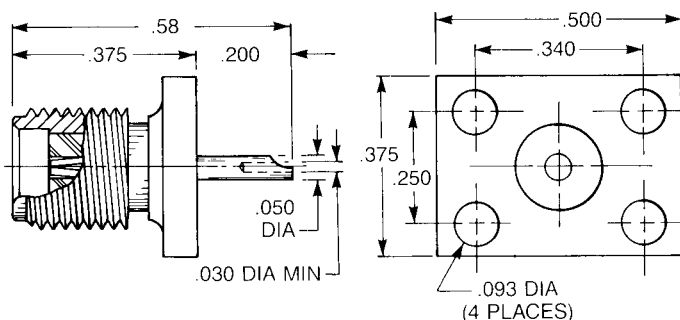
Straight Panel Jack Receptacle

- Solder pot contact
- 3/8" square flange

Captive contact:

9476-1113-000 (Gold plated)

9476-9113-000 (Passivated)



Straight Panel Jack Receptacle

- Solder pot contact
- Rectangular flange

Captive contact:

9407-1113-000 (Gold plated)

9407-9113-000 (Passivated)

SMA Straight Panel Jack Receptacles

Tab Contact

Straight Panel Jack Receptacle

- Tab contact
- 1/2" square flange

Captive contact:

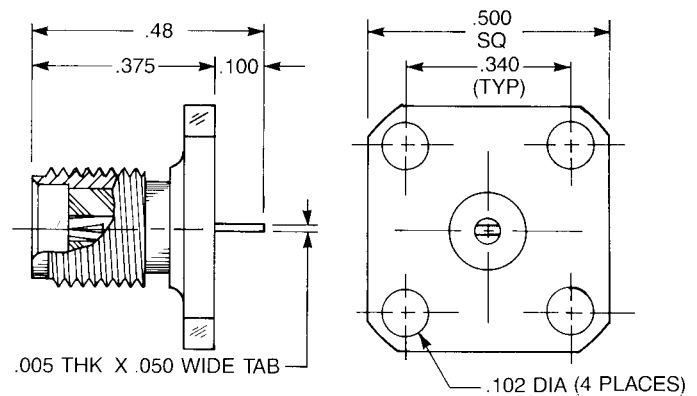
9104-1113-000 (Gold plated)

9104-9113-000 (Passivated)

Noncaptive contact:

9104-1213-000 (Gold plated)

9104-9213-000 (Passivated)



Straight Panel Jack Receptacle

- Tab contact
- 2-hole flange

Captive contact:

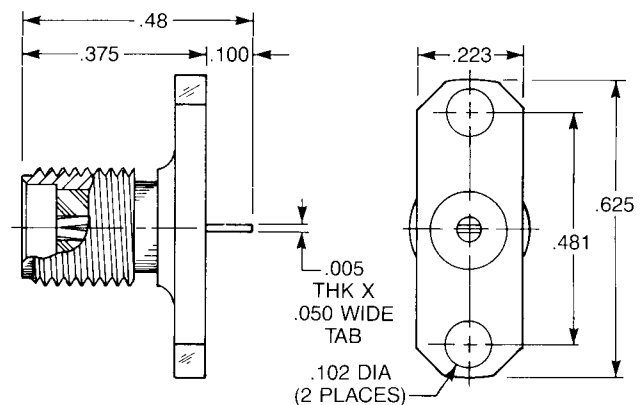
9108-1113-000 (Gold plated)

9108-9113-000 (Passivated)

Noncaptive contact:

9108-1213-000 (Gold plated)

9108-9213-000 (Passivated)



Straight Panel Jack Receptacle

- Tab contact
- 3/8" square flange

Captive contact:

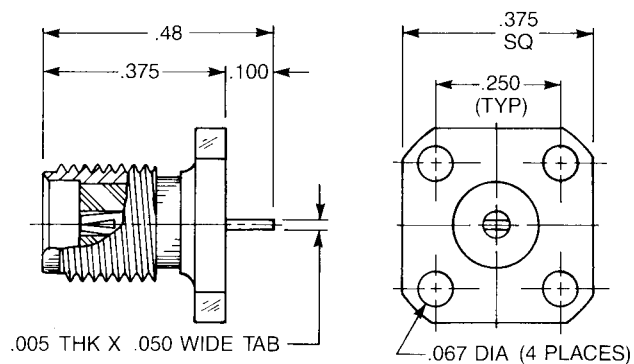
9176-1113-000 (Gold plated)

9176-9113-000 (Passivated)

Noncaptive contact:

9176-1213-000 (Gold plated)

9176-9213-000 (Passivated)



Straight Panel Jack Receptacle

- Tab contact
- Rectangular flange

Captive contact:

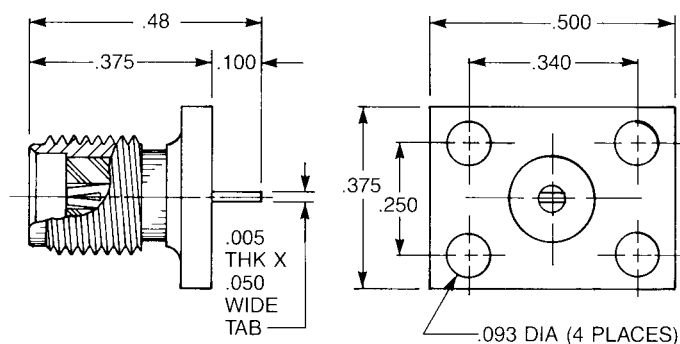
9107-1113-000 (Gold plated)

9107-9113-000 (Passivated)

Noncaptive contact:

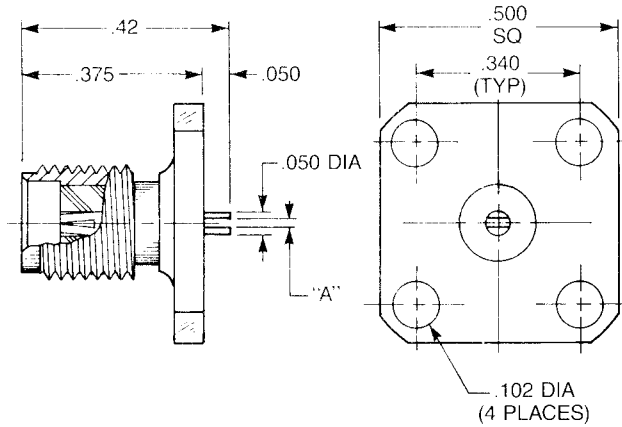
9107-1213-000 (Gold plated)

9107-9213-000 (Passivated)



SMA Straight Panel Jack Receptacles

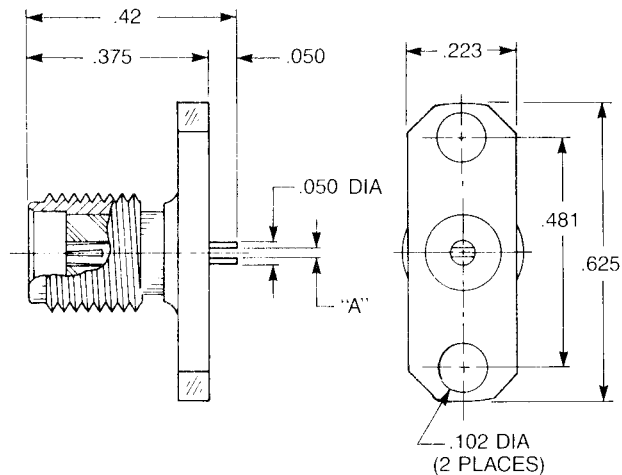
Slotted Contact



Straight Panel Jack Receptacle

- Slotted contact
- 1/2" square flange

Dim. A	Captive contact:	
.012	9204-1113-002	(Gold plated)
	9204-9113-002	(Passivated)
.018	9204-1113-001	(Gold plated)
	9204-9113-001	(Passivated)
.025	9204-1113-003	(Gold plated)
	9204-9113-003	(Passivated)
	Noncaptive contact:	
.012	9204-1213-002	(Gold plated)
	9204-9213-002	(Passivated)
.018	9204-1213-001	(Gold plated)
	9204-9213-001	(Passivated)
.025	9204-1213-003	(Gold plated)
	9204-9213-003	(Passivated)



Straight Panel Jack Receptacle

- Slotted contact
- 2-hole flange

Dim. A	Captive contact:	
.012	9208-1113-000	(Gold plated)
	9208-9113-000	(Passivated)
.018	9208-1113-001	(Gold plated)
	9208-9113-001	(Passivated)
.025	9208-1113-002	(Gold plated)
	9208-9113-002	(Passivated)
	Noncaptive contact:	
.012	9208-1213-000	(Gold plated)
	9208-9213-000	(Passivated)
.018	9208-1213-001	(Gold plated)
	9208-9213-001	(Passivated)
.025	9208-1213-002	(Gold plated)
	9208-9213-002	(Passivated)

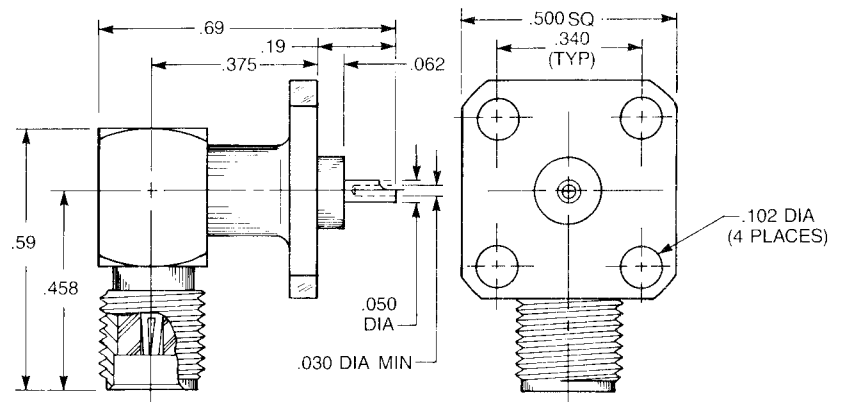
SMA Right Angle Panel Jack Receptacles

Solder Pot Contact

Right Angle Panel Jack Receptacle

- Solder pot contact
- 1/2" square flange

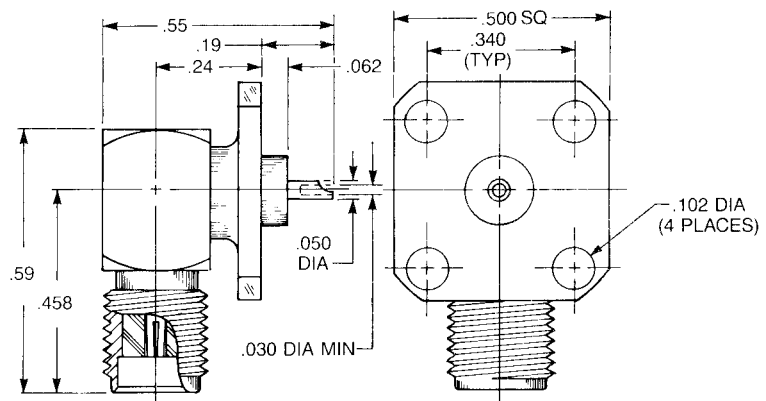
9424-1513-000 (Gold plated)
9424-9513-000 (Passivated)



Low Profile Right Angle Panel Jack Receptacle

- Solder pot contact
- 1/2" square flange

9425-1513-000 (Gold plated)
9425-9513-000 (Passivated)

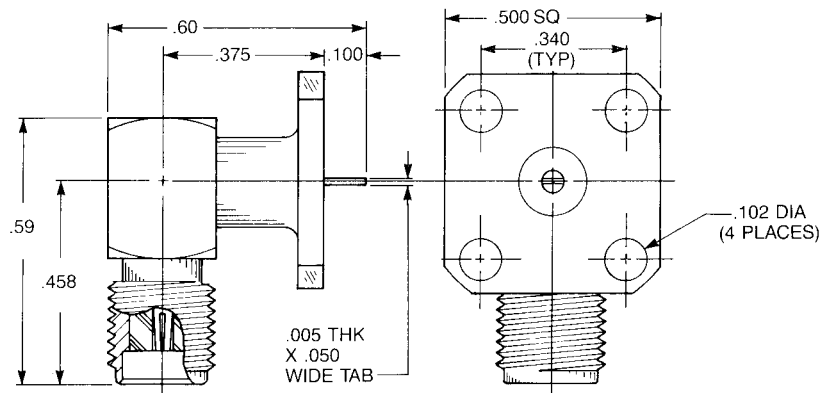


Tab Contact

Right Angle Panel Jack Receptacle

- Tab contact
- 1/2" hole flange

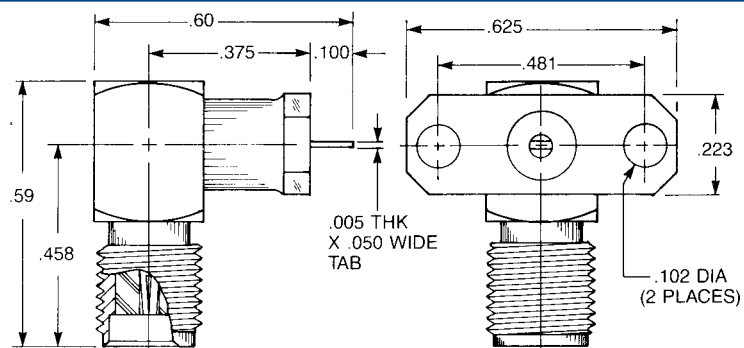
9124-1513-000 (Gold plated)
9124-9513-000 (Passivated)



Right Angle Panel Jack Receptacle

- Tab contact
- 2-hole flange

9126-1513-000 (Gold plated)
9126-9513-000 (Passivated)

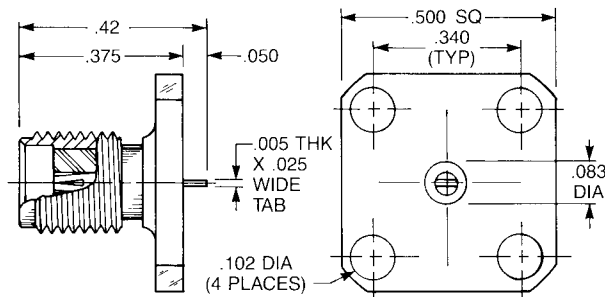


SMA Receptacles for .025" Microstrip

Standard SMA receptacles with tab contacts have the tab milled from a .050" diameter round contact. This .050" diameter is flush with the rear insulator of the connector. When these connectors are used with .025" thick microstrip, a capacitive coupling can be introduced because of the close proximity of the microstrip ground plane to the outer diameter of the contact.

These receptacles eliminate the coupling by reducing the contact rear diameter to .025". The insulator diameter at the rear of the connector is reduced to .083" to maintain 50Ω impedance.

Tab Contact



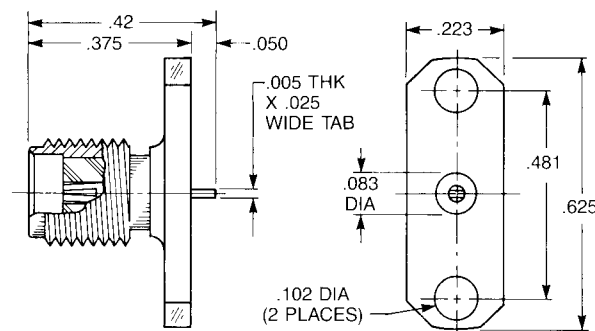
Straight Jack Receptacle

- 1/2" square flange

Captive contact:

9114-1113-000 (Gold plated)

9114-9113-000 (Passivated)



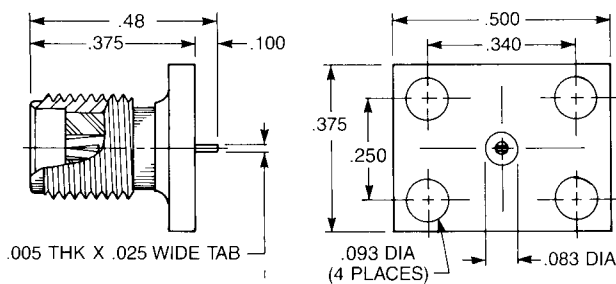
Straight Jack Receptacle

- 2-hole flange

Captive contact:

9118-1113-000 (Gold plated)

9118-9113-000 (Passivated)



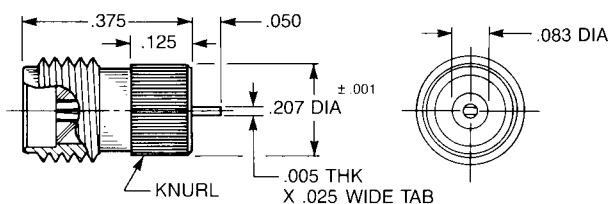
Straight Jack Receptacle

- Rectangular flange

Captive contact:

9117-1113-000 (Gold plated)

9117-9113-000 (Passivated)



Straight Jack Receptacle

- Knurl mount

Captive contact:

9163-1113-000 (Gold plated)

9163-9113-000 (Passivated)



SMA Receptacles for .010" Microstrip

These connectors have .010" diameter contact extensions for good electrical transition to narrow microstrip lines. The reduced-diameter insulators are extended beyond the flange to maintain 50Ω impedance through the microstrip package wall. All have captive contacts.

Round Contact

Straight Jack Receptacle

- 1/2" square flange

A = .057:

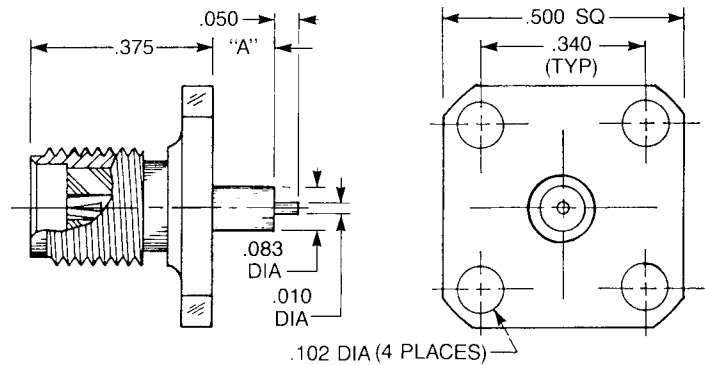
9304-1113-014 (Gold plated)

9304-9113-014 (Passivated)

A = .125

9304-1113-013 (Gold plated)

9304-9113-013 (Passivated)



Straight Jack Receptacle

- 2-hole flange

A = .057:

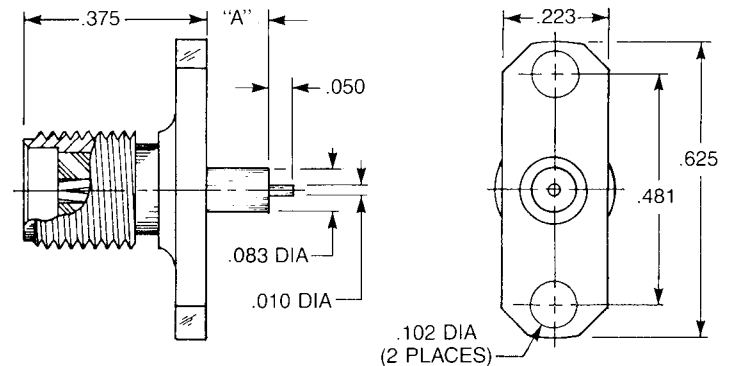
9308-1113-003 (Gold plated)

9308-9113-003 (Passivated)

A = .125:

9308-1113-001 (Gold plated)

9308-9113-001 (Passivated)



Straight Jack Receptacle

- 3/8" square flange

A = .057:

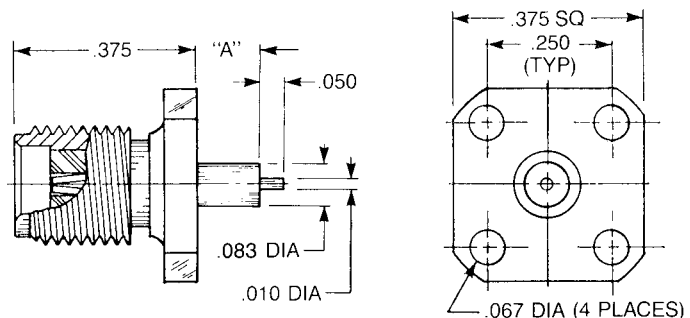
9376-1113-002 (Gold plated)

9376-9113-002 (Passivated)

A = .125:

9376-1113-001 (Gold plated)

9376-9113-001 (Passivated)



Straight Jack Receptacle

- Rectangular flange

A = .057:

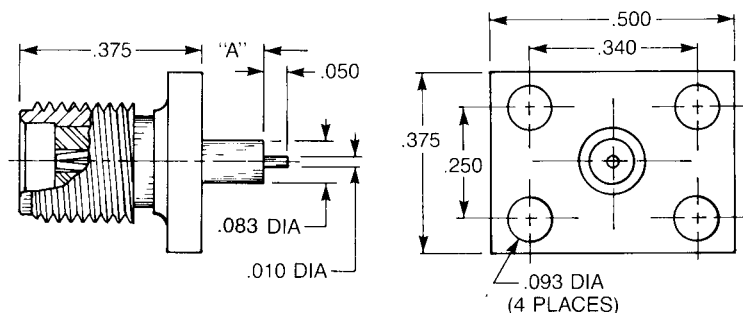
9307-1113-002 (Gold plated)

9307-9113-002 (Passivated)

A = .125:

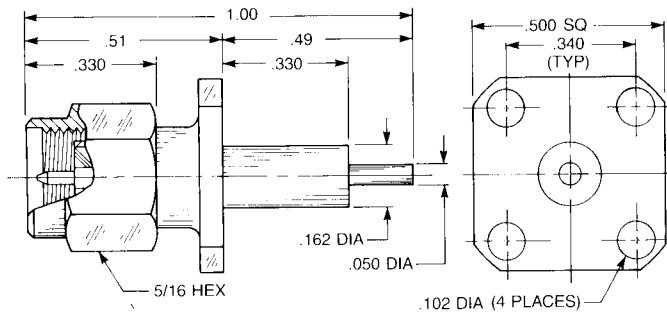
9307-1113-001 (Gold plated)

9307-9113-001 (Passivated)



SMA Panel Plug Receptacles

Straight—Extended Contact and Insulator



Straight Panel Plug Receptacle

- Extended contact and insulator
- 1/2" square flange

Captive contact:

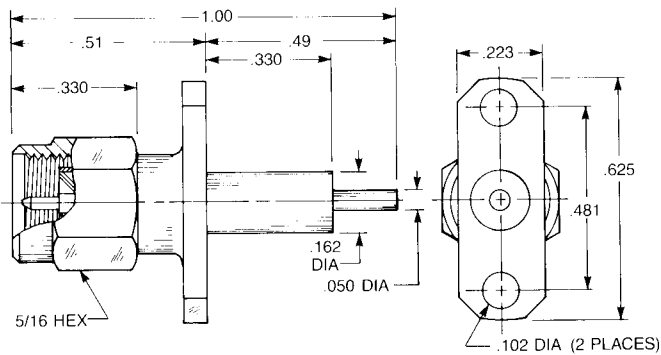
9009-1113-000 (Gold plated)

9009-9113-000 (Passivated)

Noncaptive contact:

9009-1213-000 (Gold plated)

9009-9213-000 (Passivated)



Straight Panel Plug Receptacle

- Extended contact and insulator
- 2-hole flange

Captive contact:

9055-1113-000 (Gold plated)

9055-9113-000 (Passivated)

Noncaptive contact:

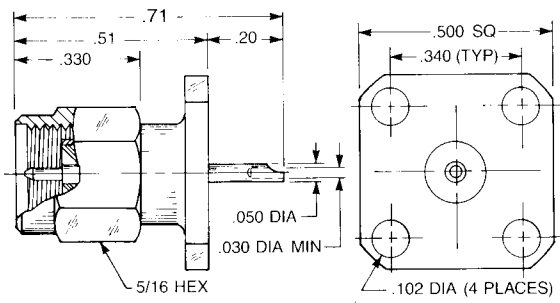
9055-1213-000 (Gold plated)

9055-9213-000 (Passivated)



SMA Panel Plug Receptacles

Straight—Solder Pot Contact



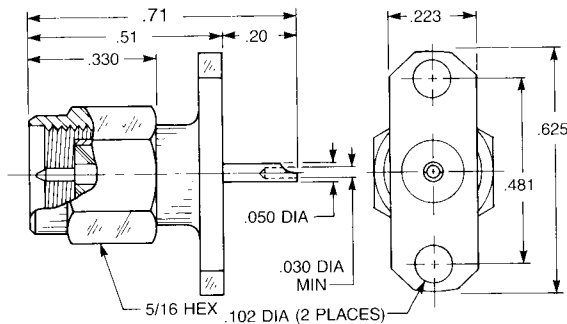
Straight Panel Plug Receptacle

- Solder pot contact
- 1/2" square flange

Captive contact:

9409-1113-000 (Gold plated)

9409-9113-000 (Passivated)



Straight Panel Plug Receptacle

- Solder pot contact
- 2-hole flange

Captive contact:

9455-1113-000 (Gold plated)

9455-9113-000 (Passivated)

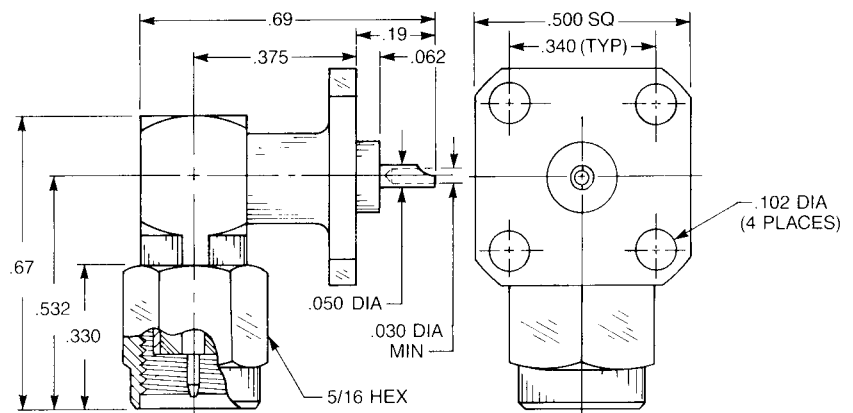
Right Angle—Solder Pot Contact

Right Angle Panel Plug Receptacle

- Solder pot contact
- 1/2" square flange

9454-1513-000 (Gold plated)

9454-9513-000 (Passivated)



SMA Panel Plug Receptacles

Straight—Tab Contact

Straight Panel Plug Receptacle

- Tab contact
- 1/2" square flange

Captive contact:

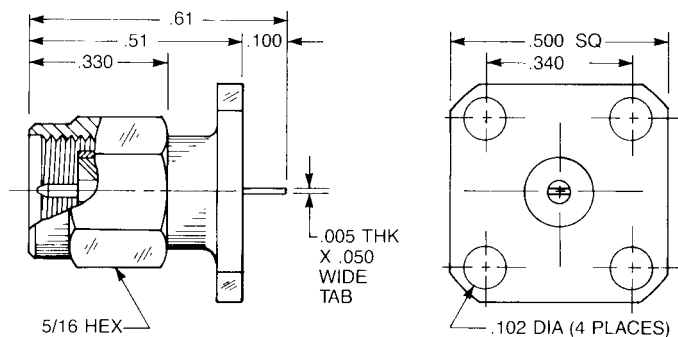
9109-1113-000 (Gold plated)

9109-9113-000 (Passivated)

Noncaptive contact:

9109-1213-000 (Gold plated)

9109-9213-000 (Passivated)



Straight Panel Plug Receptacle

- Tab contact
- 2-hole flange

Captive contact:

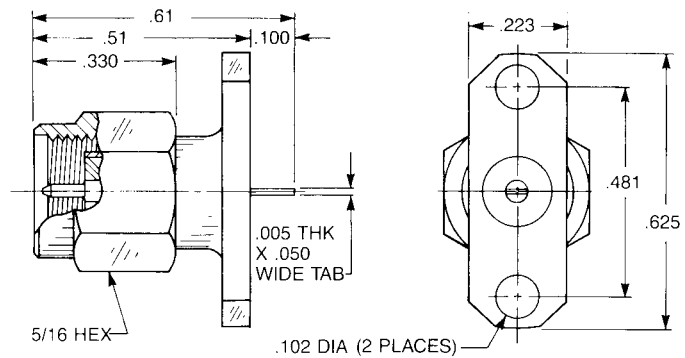
9155-1113-000 (Gold plated)

9155-9113-000 (Passivated)

Noncaptive contact:

9155-1213-000 (Gold plated)

9155-9213-000 (Passivated)



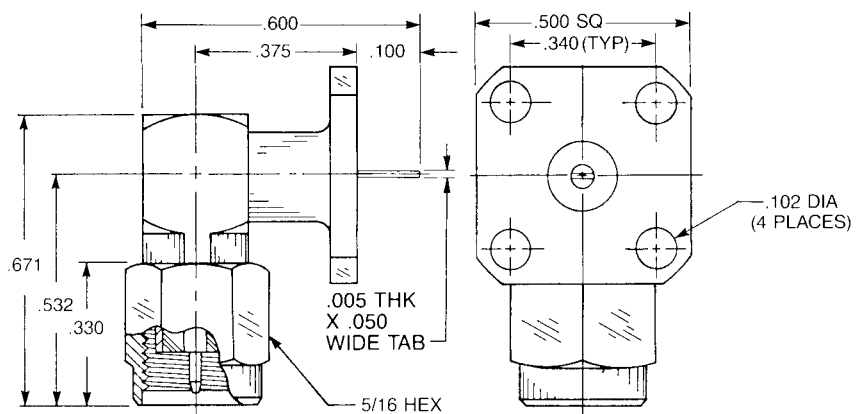
Right Angle—Tab Contact

Right Angle Panel Plug Receptacle

- Tab contact
- 1/2" square flange

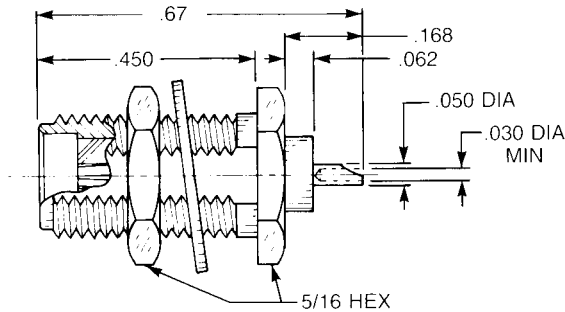
9154-1513-000 (Gold plated)

9154-9513-000 (Passivated)



SMA Bulkhead Jack Receptacles

Straight—Solder Pot Contact



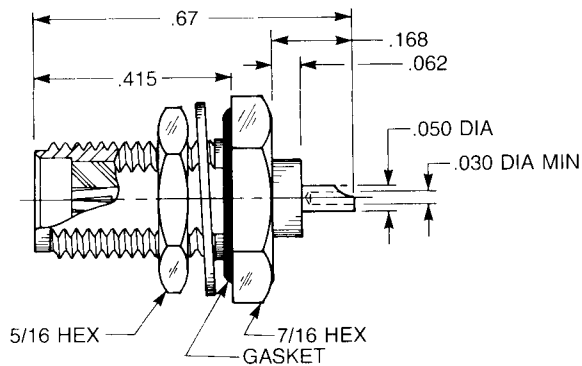
Straight Bulkhead Jack Receptacle

- Solder pot contact
- Rear mount

Captive contact:

9412-1113-000 (Gold plated)

9412-9113-000 (Passivated)



Straight Bulkhead Jack Receptacle

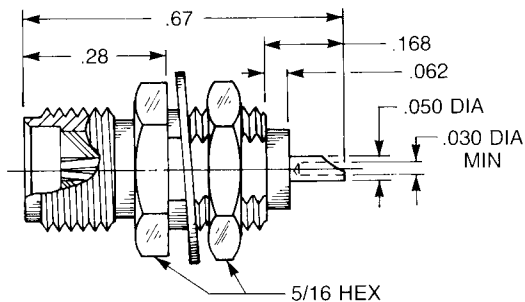
- Solder pot contact
- Rear mount
- With mounting gasket

Captive contact:

9432-1113-000 (Gold plated)

9432-9113-000 (Passivated)

QPL version available (M39012/61)



Straight Bulkhead Jack Receptacle

- Solder pot contact
- Front mount

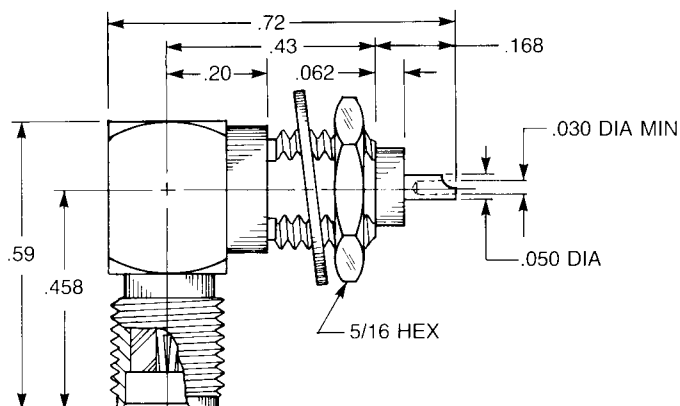
Captive contact:

9422-1113-000 (Gold plated)

9422-9113-000 (Passivated)

QPL version available (M39012/61)

Right Angle—Solder Pot Contact



Right Angle Bulkhead Jack Receptacle

- Solder pot contact
- Front mount

Captive contact:

9609-1513-000 (Gold plated)

9609-9513-000 (Passivated)

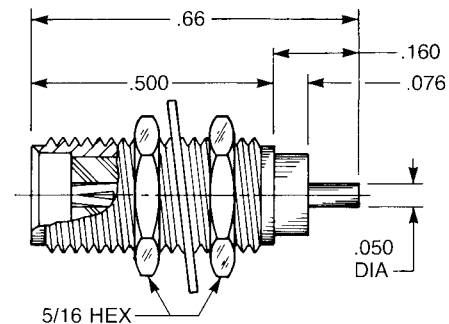


SMA Bulkhead Jack Receptacles

Straight—Extended Contact and Insulator

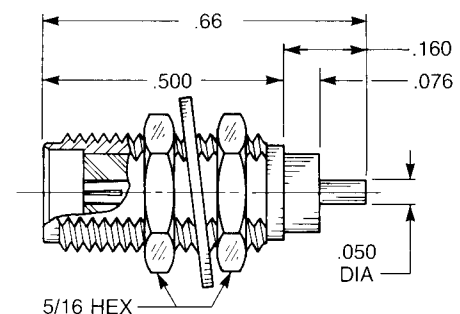
Straight Bulkhead Jack Receptacle

- Post contact
 - Round body
 - Provided with two mounting nuts and one lockwasher
- Captive contact:
9013-1113-000 (Gold plated)
9013-9113-000 (Passivated)



Straight Bulkhead Jack Receptacle

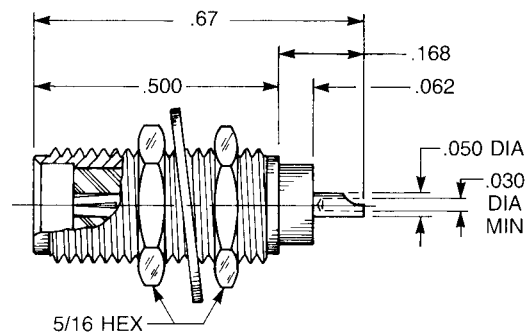
- Post contact
 - D-flatted body
 - Provided with two mounting nuts and one lockwasher
- Captive contact:
9056-1113-000 (Gold plated)
9056-9113-000 (Passivated)



Straight—Solder Pot Contact

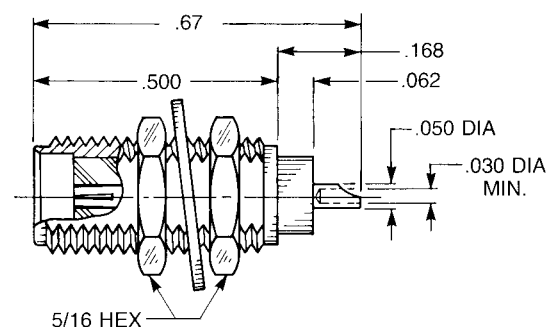
Straight Bulkhead Jack Receptacle

- Solder pot contact
 - Round body
 - Provided with two mounting nuts and one lockwasher
- Captive contact:
9413-1113-000 (Gold plated)
9413-9113-000 (Passivated)



Straight Bulkhead Jack Receptacle

- Solder pot contact
 - D-flatted body
 - Provided with two mounting nuts and one lockwasher
- Captive contact:
9456-1113-002 (Gold plated)
9456-9113-002 (Passivated)

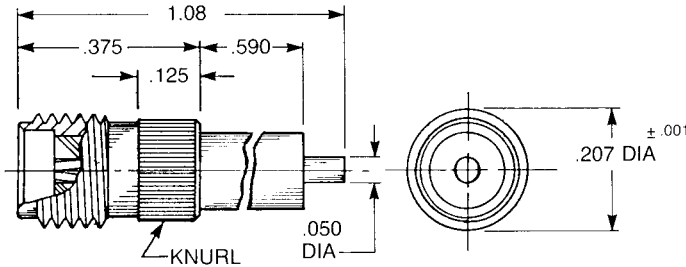


SMA Knurl Mount Receptacles

These knurl mount receptacles can provide an economical alternative to flange mounted connectors, and are especially useful in dense packaging applications.

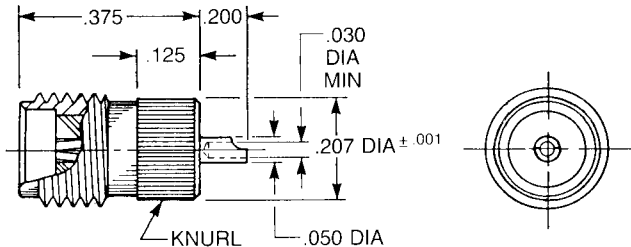
They should be used in panels at least .100" thick.

Straight Jack—Extended Contact and Insulator



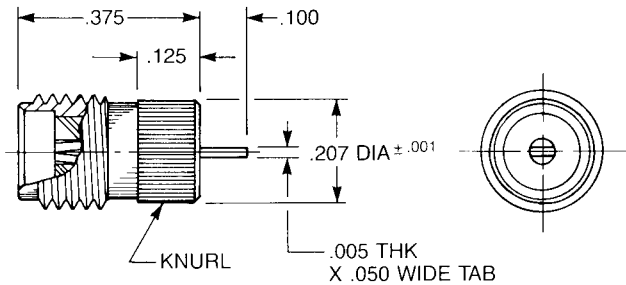
- Extended contact and insulator
- Captive contact:
9033-1113-000 (Gold plated)
9033-9113-000 (Passivated)
- Noncaptive contact:
9033-1213-000 (Gold plated)
9033-9213-000 (Passivated)

Straight Jack—Solder Pot Contact



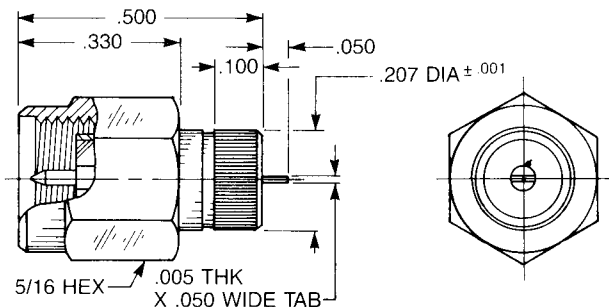
- Solder pot contact
- Captive contact:
9433-1113-000 (Gold plated)
9433-9113-000 (Passivated)

Straight Jack—Tab Contact



- Tab contact
- Captive contact:
9133-1113-000 (Gold plated)
9133-9113-000 (Passivated)
- Noncaptive contact:
9133-1213-000 (Gold plated)
9133-9213-000 (Passivated)

Straight Plug—Tab Contact



- Tab contact
- Captive contact:
9139-1113-000 (Gold plated)
9139-9113-000 (Passivated)
- Noncaptive contact:
9139-1213-000 (Gold plated)
9139-9213-000 (Passivated)

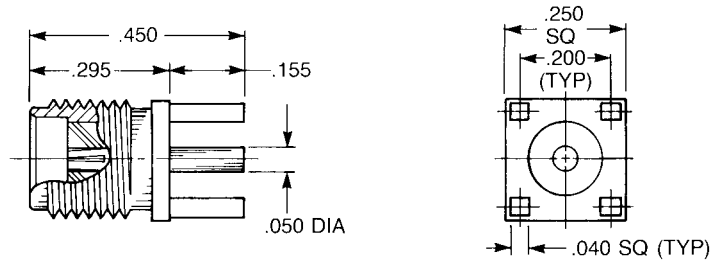


SMA P.C. Board Receptacles

Straight Jack

Straight Jack Receptacle

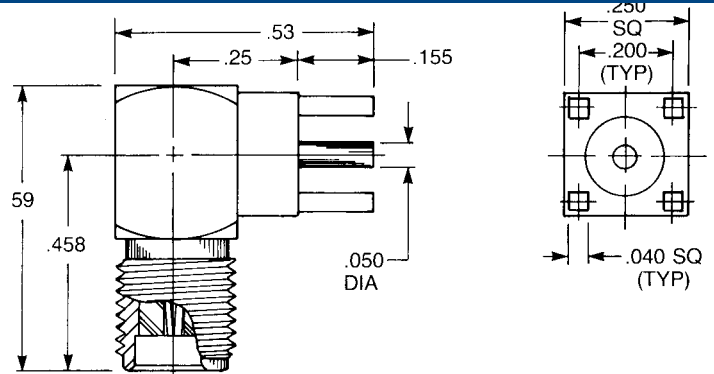
9650-1113-000 (Gold plated)



Right Angle Jack

Right Angle Jack Receptacle

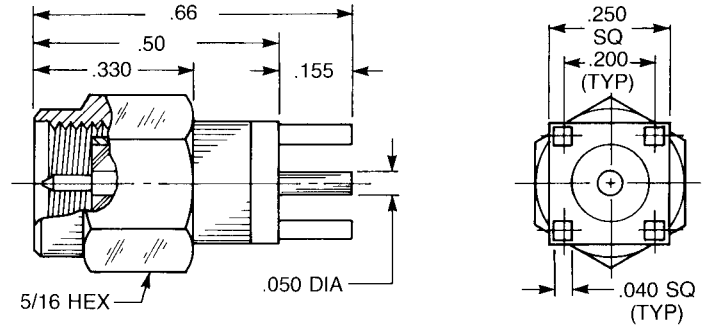
9647-1513-000 (Gold plated)



Straight Plug

Straight Plug Receptacle

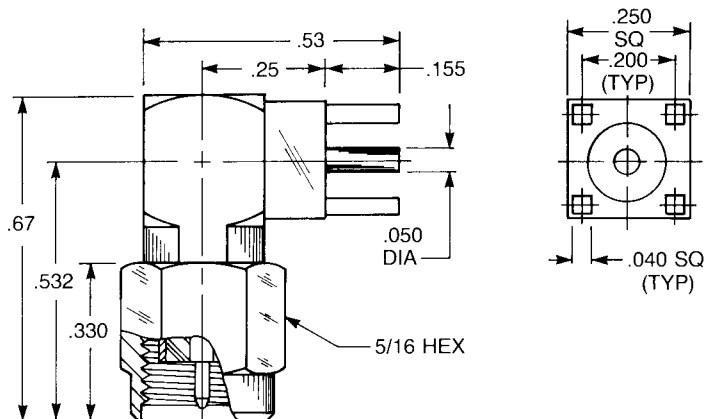
9649-1113-000 (Gold plated)



Right Angle Plug

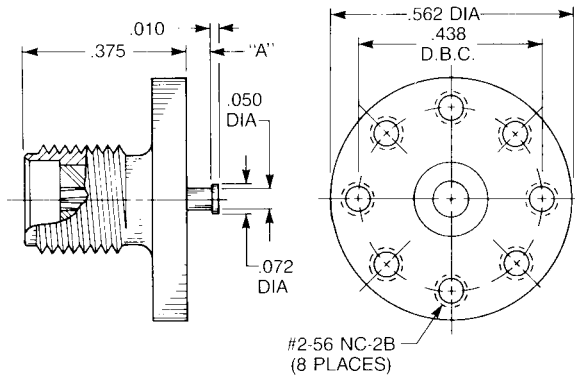
Right Angle Plug Receptacle

9646-1513-000 (Gold plated)



SMA Stripline Receptacles

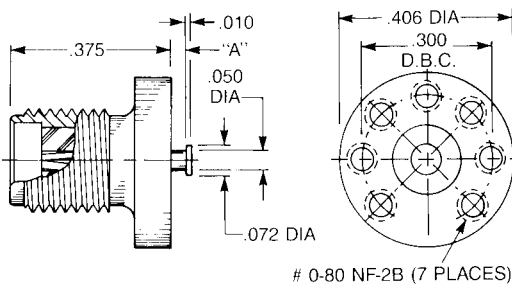
Straight Jacks



- Standard flange
- Noncaptive contact

Dim. A

.031	9003-1213-001	(Gold plated)
	9003-9213-001	(Passivated)
.063	9003-1213-002	(Gold plated)
	9003-9213-002	(Passivated)
.125	9003-1213-003	(Gold plated)
	9003-9213-003	(Passivated)

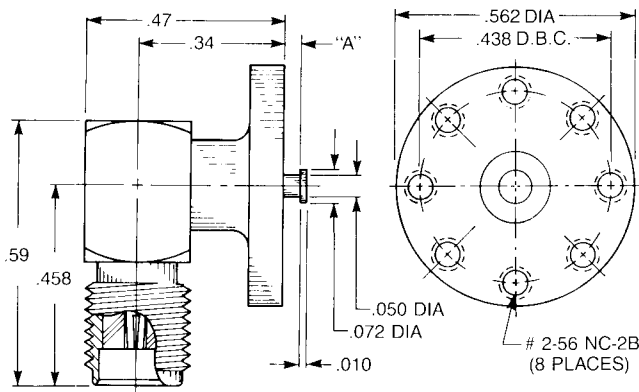


- Small diameter flange
- Noncaptive contact

Dim. A

.031	9610-1213-001	(Gold plated)
	9610-9213-001	(Passivated)
.063	9610-1213-002	(Gold plated)
	9610-9213-002	(Passivated)
.125	9610-1213-003	(Gold plated)
	9610-9213-003	(Passivated)

Right Angle Jack

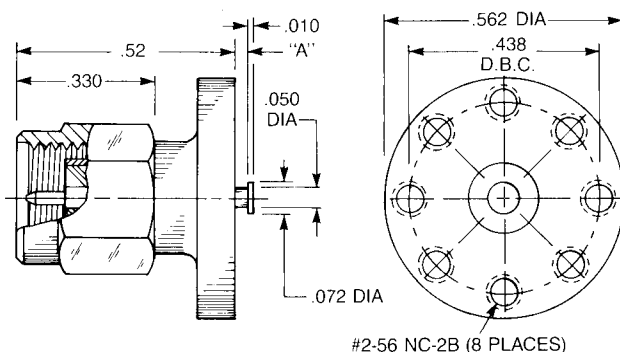


- Standard flange
- Noncaptive rear contact

Dim. A

.031	9035-1513-001	(Gold plated)
	9035-9513-001	(Passivated)
.063	9035-1513-002	(Gold plated)
	9035-9513-002	(Passivated)
.125	9035-1513-003	(Gold plated)
	9035-9513-003	(Passivated)

Straight Plug



- Standard flange
- Noncaptive contact

Dim. A

.031	9034-1213-001	(Gold plated)
	9034-9213-001	(Passivated)
.063	9034-1213-002	(Gold plated)
	9034-9213-002	(Passivated)
.125	9034-1213-003	(Gold plated)
	9034-9213-003	(Passivated)