

Surface Mount Receptacles

ONLINE CATALOG

Introduction

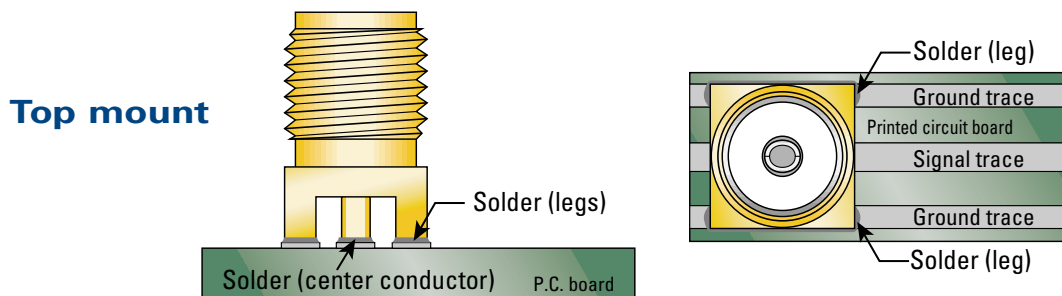
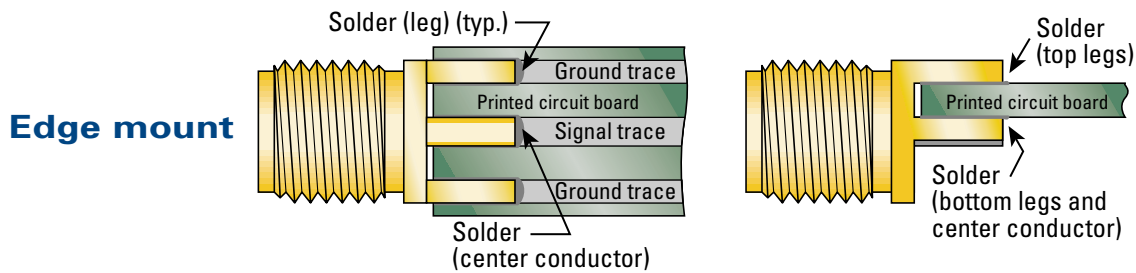
AEP surface-mount P.C. board receptacles are available in top mount or edge mount types, in SMA, SMB, SMC, SSMB, SSMC, and 75Ω series. When mounted, they withstand torque, shear, and pull forces greatly in excess of standard mating and unmating forces. Tape-and-reel packaging is available.

AEP surface-mount P.C. board receptacles meet all interface requirements of MIL-STD-348, and appropriate performance requirements of MIL-PRF-39012. Bodies and contacts are gold plated, but other finishes are available. The items below are only the most commonly-used configurations; any printed-circuit board receptacle shown in our full catalog can be provided in top- or edge-mount versions.

Edge-mount types can be supplied quickly for any board thickness up to these maximums: .062" for SMA, SMB, and SMC; .045" for SSMB and SSMC. Connectors for thicker boards can be supplied by special order.

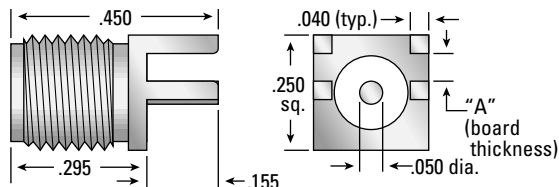
For complete specifications and interface dimensions, please see our full-line catalog, or the online catalog for the appropriate series at www.aepconnectors.com.

How they work:



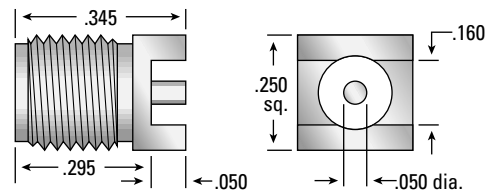
SMA Jacks

Edge mount



"A"	AEP P/N
.032	9650-1113-014
.062	9650-1113-017

Top mount



AEP P/N
9650-1113-005



APPLIED ENGINEERING PRODUCTS

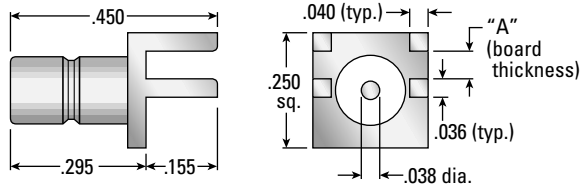
(203) 776-2813 • FAX (203) 776-8294

www.aepconnectors.com • aepsales@aepconnectors.com

Surface Mount Receptacles

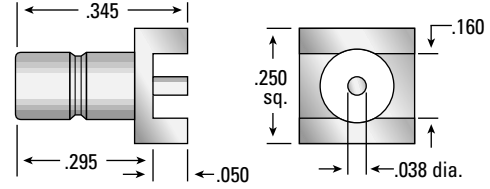
SMB Jacks

Edge mount



"A"	AEP P/N
.032	2009-1511-035
.062	2009-1511-023

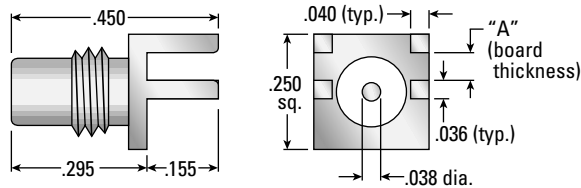
Top mount



AEP P/N
2009-1511-019

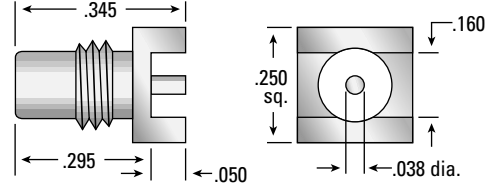
SMC Jacks

Edge mount



"A"	AEP P/N
.032	1009-1511-004
.062	1009-1511-005

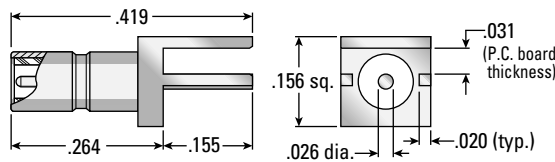
Top mount



AEP P/N
1009-1511-006

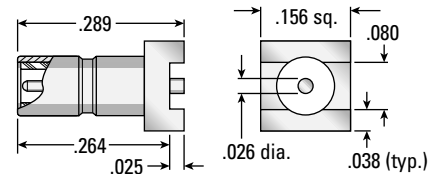
SSMB Jacks

Edge mount



AEP P/N
7209-1511-060

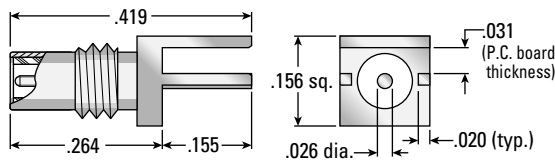
Top mount



AEP P/N
7209-1511-015

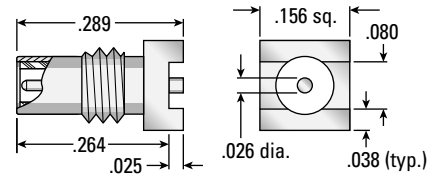
SSMC Jacks

Edge mount



AEP P/N
7009-1511-005

Top mount



AEP P/N
7009-1511-004