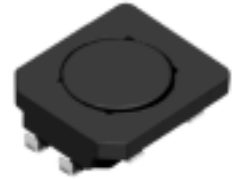
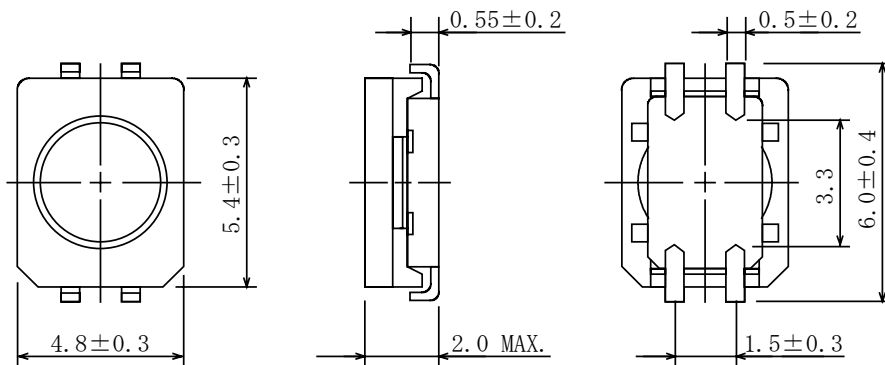
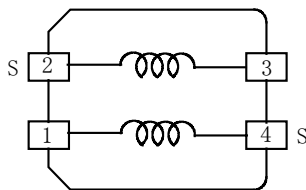


**Type: CLQ61**
**◆ Product Description**

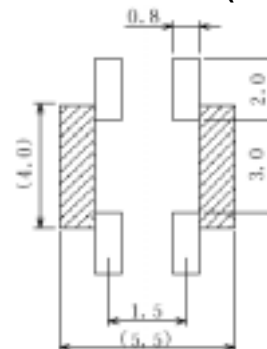
- 5.7×5.1mm Max.(L×W), 2.0mm Max.(Height)
- Inductance range: 2.2 μ H~330 μ H, Rated current range: 0.07A~1.36A
- In addition to the typical versions of parameters shown here, custom designs are available to meet your exact requirements


**◆ Feature**

- Magnetically shielded construction.
- Max. Operating frequency 1MHz, Max Operating power 750mW (1MHz)
- Ideally used in Digital still camera, Digital video camera, LCD TV, Portable equipment.
- RoHS Compliance

**◆ Dimensions (mm)**

**◆ Schematics (Bottom)**


“S” indicates winding start.

**◆ Land Pattern (mm)**

**◆ Specification**

Sample No.	Inductance(4-1) (1kHz/1.0V)	D.C.R. (4-1)	Rated current (4-1)
6334-T052	22 μ H ± 35% within	975m Ω Max.	0.37A